



Perfect Balance of  
**WORK AND PLAY**

Where every amenity awaits, live, work, and create

Inspired by the home office from the series Start-Up, a stunning penthouse is a dimly-lit haven with warm wood hues and a dash of pop color.

Collins Boulevard offers you a home with a personal workspace while still having a set boundary between the 'living' & 'working' area of the house to maximize productivities. It is a space to inspire & be inspired.

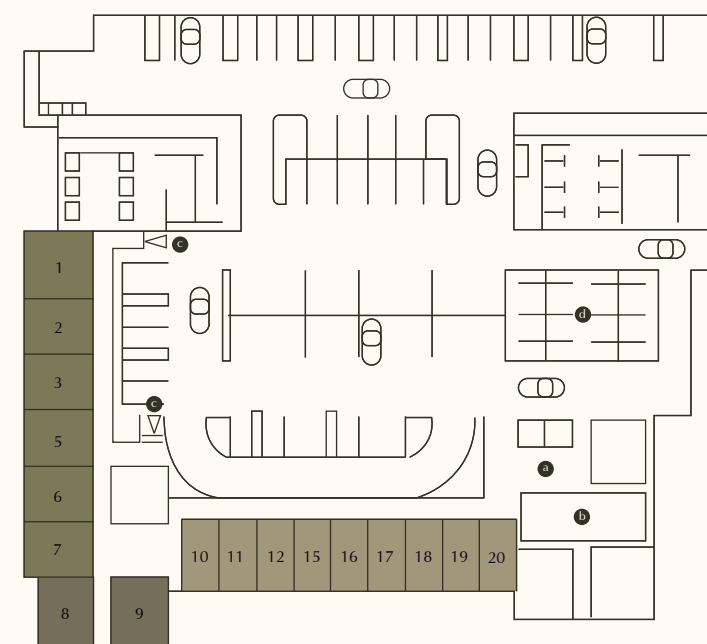
Designed with the modern professional in mind, our apartments feature distinct living and working areas. A personal workspace that enhances your productivity while maintaining clear boundaries from your living space. Achieve the perfect work-life balance without compromising on style or comfort.

**F.O.R** FACILITATED OFFICE RESIDENCE

FLOOR PLAN

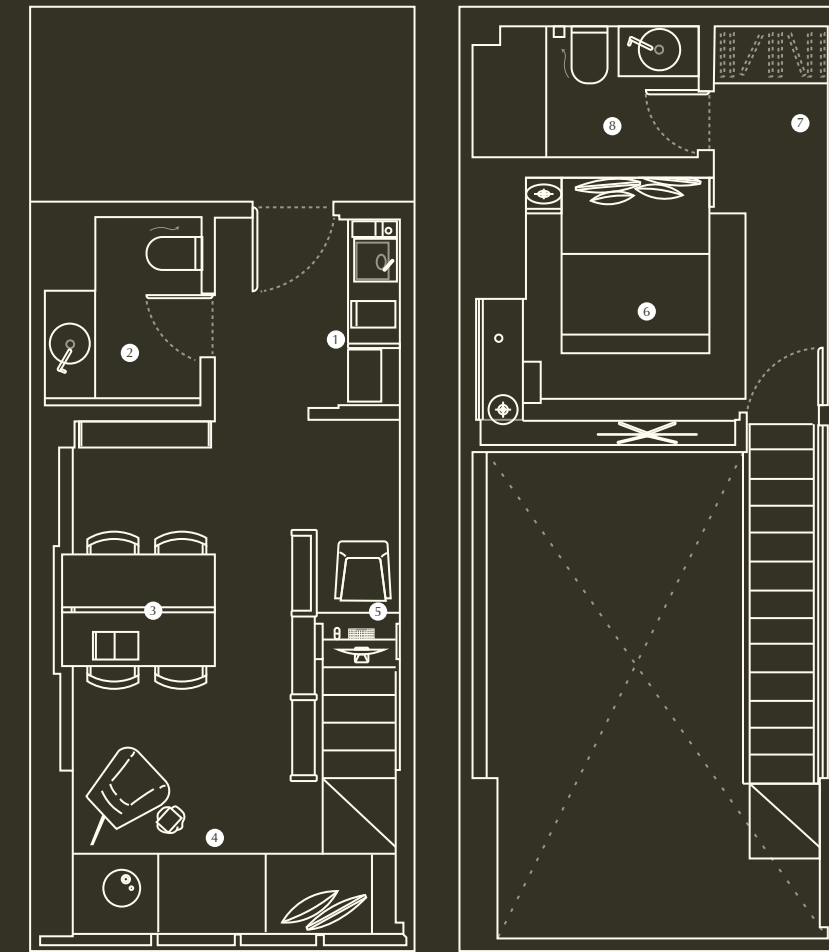
- a F.O.R Lift Lobby
- b F.O.R Business Lounge
- c F.O.R Entrance from Parking
- d F.O.R Public Storage

- TYPE A
- TYPE B
- TYPE C



**F.O.R** FACILITATED OFFICE RESIDENCE

- 1 pantry
- 2 powder room
- 3 dining / work area
- 4 thinking lounge
- 5 private study space
- 6 bedroom
- 7 closet
- 8 bathroom



Transform Your Home Into  
**THE PERFECT WORKSPACE**

In today's world, the boundaries between living and working spaces are more important than ever. Our unique design approach ensures that your home can function as a productive personal workspace without sacrificing comfort or style.



**ELEVATE YOUR LIFESTYLE WITH F.O.R**

Step into the future of luxury living with F.O.R. Each floor features a state-of-the-art business lounge, ideal for professional engagements and social gatherings. Additionally, enjoy the convenience of direct access to a parking lobby, making your daily commute effortless and stress-free.



"Direct Access to the Parking Lobby"



10,000<sup>sqm</sup> Resort Facilities



300<sup>sqm</sup> Fitness Centre



1k Sky Jogging Track



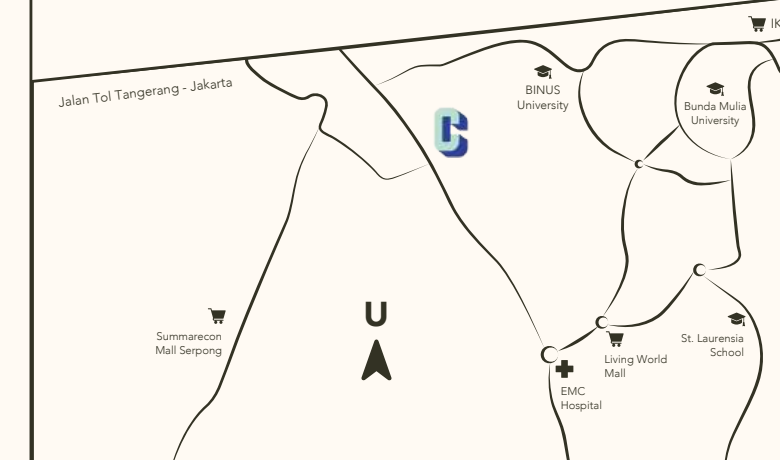
1.6<sup>th</sup> Lifestyle Mall



<b>WALL FINISHES</b>	: Common Area	: HPL Taco Ultimate	<b>SANITY WARES</b>	: Wastafel	: Ex. Inax
		: Grey Tinted Mirror		: Top Table	: Surface Ex Quadra
		: Granite like textured paint		: Cabinet	: Cat Duco Ex Nippon Paint
	: Bedroom	: HPL Taco Ultimate	<b>FLOOR FINISHES</b>	: Common Area	: Homogeneous Tiles
<b>CEILING FINISHES</b>	: Common Area	: Gypsum Board with paint finishes		: Bedroom	: Taco Luxury Vinyl
		: Granite like textured paint	<b>STAIRS FINISHES</b>		: Quadra Surface with metal details
	: Bedroom	: High Pressure Laminates Taco Ultimate	<b>LIGHTING</b>		: Downlight and Magnetic Ex Dextron
<b>KITCHEN SET FINISHES</b>	: Top Table	: Quadra Surface Ex Pietra Grigio	<b>ELECTRICITY</b>		: 6600 VA
	: Cabinet	: Plywood Fin Duco Doff	<b>WINDOW</b>		: Glass with Aluminium Frame
	: Kitchen Sink	: Ex Golden Hand			: Blinds Ex Sandei
			<b>LOOSE FURNITURE</b>		: <b>CAMERICH</b>

**LOCATION**

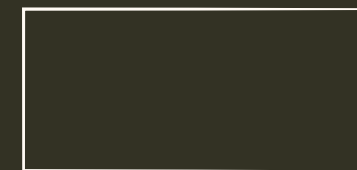
- 5 Mins to Mall Living World
- 5 Mins to Mall Alam Sutera
- 5 Mins to Tol Tangerang - Jakarta
- 5 Mins to Summarecon Mall Serpong
- 8 Mins to IKEA
- 10 Mins to BINUS University
- 10 Mins to St. Laurensia School
- 10 Mins to Bunda Mulia University



Collins Boulevard boasts a range of impressive facilities designed to enhance your living experience. The 5 star facilities include fitness center, olympic size swimming pool, 1km jogging track, lifestyle mall and 1:1 parking lots. With its thoughtfully designed features, we provide both functionality and aesthetic appeal to enhance your everybody living experience.

**COLLINS MARKETING GALLERY**

Jl. MH. Thamrin No.17, Panunggangan  
Pinang, Kota Tangerang



DEVELOPED BY  
**TRINITILAND**  
WWW.TRINITILAND.COM

Disclaimer: All pictures & photos just for illustration on preparation, they are not always the same the developer build, although the developer seriously to think and preparing this catalogue, the developer will not take any responsibility if there are some mistakes in the future.

**NETFLIX** - inspired  
design by Series  
"Start-Up"