

# WHY ARUMAYA



Integrated Development



Great Accessibility



Semi Furnished with Luxury Quality



Surrounded by Prominent Amenities



Lavish Facilities



Developed by Reputable Main Contractor



## Arumaya Marketing Gallery:

Jl. Lebak Bulus Raya 1, Cilandak Jakarta Selatan

## Marketing Office:

(021) 2782 5800 / 0851 9598 8889

ARUMAYA.CO.ID | contact@arumaya.co.id

### DISCLAIMER

Neither the Developer nor its agents will be held responsible for any inaccuracies or omissions in the information contained in this brochure. The Developer does not accept responsibility for any errors or omissions or for any losses suffered by any person or legal entity resulting from the use of the information contained in this brochure, howsoever caused. The statements, visual representations, models, show units, displays and illustrations, photographs, art renderings and other graphic representations and references are intended to portray only artistic impressions of the development and decor and cannot be regarded as accurate or representations of fact. All areas and other measurements are approximate measurements and are subject to change and final survey. All plans and models are not to scale unless expressly stated and are subject to amendment. Potential Purchasers should not rely solely on the information contained within this brochure but should conduct their own independent enquiries and seek independent professional advice as necessary. All informations, specifications, renderings, visual representations, measurements and plans are subject to change as may be required by us and/or the relevant authorities. The Conditional Sale and Purchase Agreement (CSPA, also known as a PPJB) shall form the entire agreement between the Developer and the Purchaser and shall supersede all statements, representations or promises made prior to the signing of the CSPA and shall in no way be modified by any statements, representations or promises made by us or our agents which are not embodied in the CSPA, whether before or after the signing of the CSPA. Any explanation concerning the CSPA and the development is for information purposes only and it is recommended that potential Purchasers seek independent legal advice with regard to the proposed purchase.



# ARUMAYA

RESIDENCES

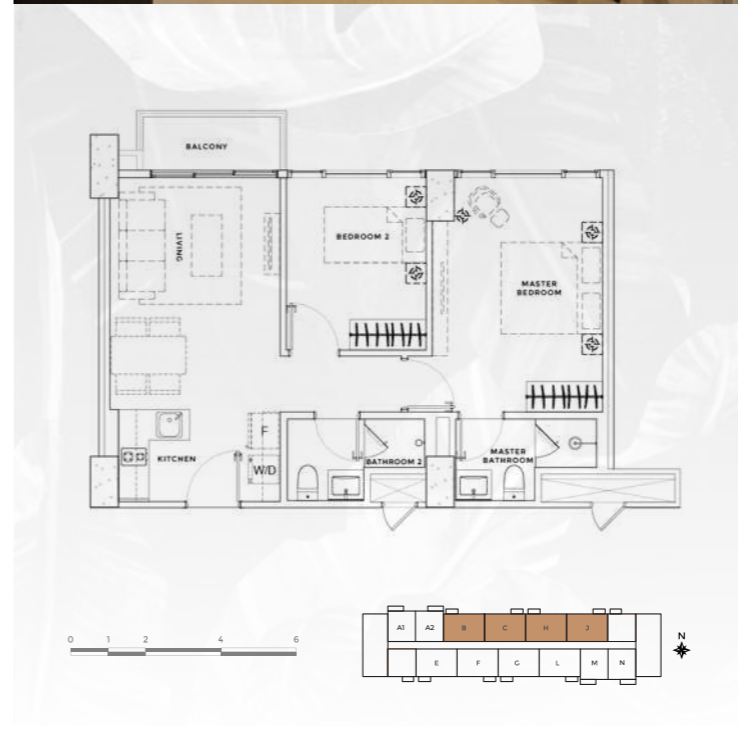
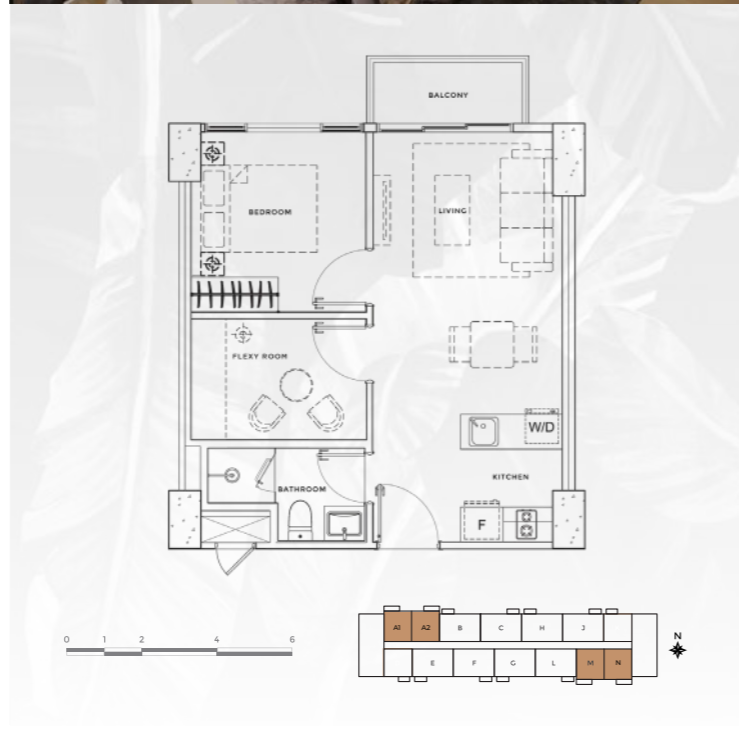


## Integrated Development

Exclusive residence integrated with 2 office towers, retail, and commercial centers.

**SIMPLY INTEGRATED, SMARTLY CONNECTED**

Developed by  
**AstraLand Indonesia**  
 Astra Property | Hongkong Land



Architect by



Construction Managed by



Interior Design By

**PTANG STUDIO LIMITED**

Landscape Design by

*Salad dressing*