

KOTA BARU
PARAHYANGAN

MANDIRI · MADANI · ALAMI

BUMILUHUR

HIGHLAND



Bumiluhur emerges as a new masterpiece by Kota Baru Parahyangan, envisioned as a unique residential area within the contoured highlands and alluring natural landscapes. Embodying the essence of the Sundanese name “noble land,” Bumiluhur Highland, harmonizes the breathtaking natural beauty of its surroundings with elegant and contemporary eco-luxury.

AN ELEVATED RESIDENTIAL

WITH SERENE LIVING SPACES



Crafted with a gift from mother earth that nurtures life and fosters inner peace, BumiLuhur Highland presents a harmonious balance between modern comforts and the calming embrace of nature, promising a quality living experience with a privileged connection to the earth's essence.

Spanning 80 hectares at an altitude of 700 meters above sea level, 50 meters higher than the current development area, this area will feature residential clusters, neighborhood commercial spaces, and unique facilities.



An aerial photograph of a lush green valley. The foreground shows a steep, grassy hillside. In the middle ground, a small town with several buildings is visible on a hillside. The valley floor is a mix of green fields and some cleared areas. In the background, rolling hills and mountains are visible under a clear blue sky with some light clouds. The overall scene is peaceful and scenic.

HILLSIDE SANCTUARY,
NATURE-INTEGRATED

BUMILUHUR BLEND SEAMLESSLY WITH
THE LUSH GREENERY AND COOL AIR.
THOUGHTFULLY INTEGRATED PUBLIC
AREAS IMMERSE WITH NATURE,
SUPPORTING A WELLNESS LIFESTYLE,
WHERE IT IS ALSO ACCOMPANIED
BY FAST ACCESS CONNECTED TO
MODERN LIVING.









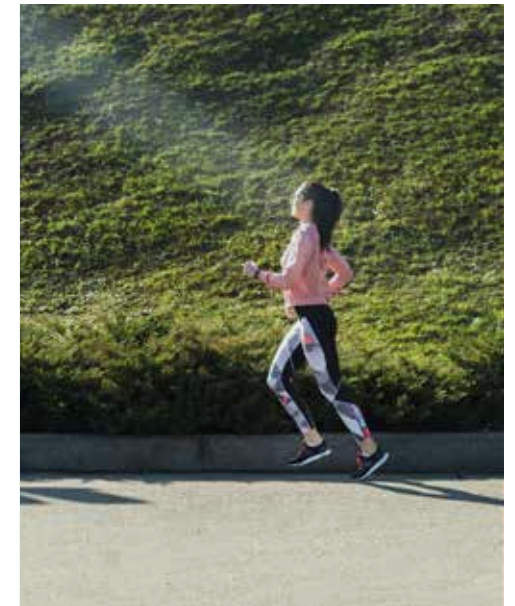
ESSENTIAL FACILITIES
FOR A HEALTHY LIFESTYLE







Among the exclusive facilities offered are a Country Club, which provides a variety of sports facilities and social activities, along with a scenic jogging track that allows residents to enjoy the natural beauty while staying active. These exclusive facilities ensure a high quality of life.



Tatar Surawisesa carries a name rich in history and significance, symbolizing heroism and authority from the Sundanese kingdom. This name imbues the area with a unique character and historical depth, offering residents a distinctive and prestigious living environment.

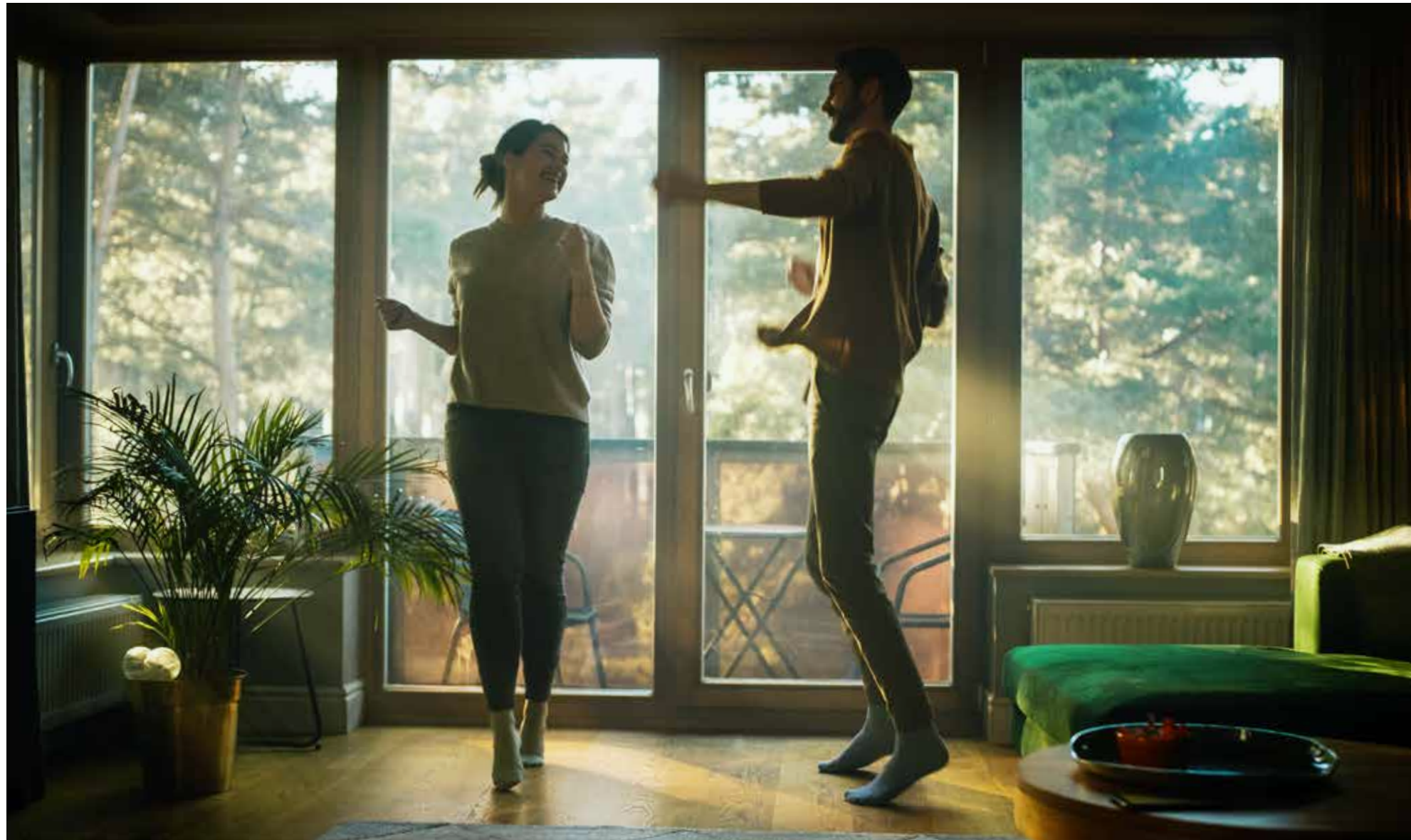


WHERE HERITAGE MEETS

PRESTIGIOUS LIVING



TATAR
SURAWISESA



Experience precious moments with your family in peaceful
ambiance, stunning views, and natural beauty of hillside
landscapes. Cherish quality time together, making every
weekday as special as the weekend. Explore the perfect
blend of comfort and nature in your dream home.

Wisesa Asri

Wisesa Asri House combine elegance with practicality. Each home is designed to ensure maximum comfort for its residents. With spacious living areas and high-quality finishes, these homes provide a luxurious living experience. The backyard is beautifully landscaped, offering a peaceful retreat with stunning views.





The interiors are designed with attention to detail, featuring modern conveniences and ample natural light, making every corner of the home inviting and functional. The thoughtful layout ensures that every space is utilized efficiently, creating a harmonious living environment.







Experience ultimate comfort in the master bedroom of this charming hilly house. With its wide space and intimate ambiance, it offers the perfect retreat after a long day. The room is thoughtfully designed as a serene place to rest, allowing you to unwind and relax in style. Enjoy the tranquil setting and ample room to create your personal sanctuary.



Elevate your lifestyle with this stunning rooftop, the perfect place for family gatherings or a relaxing retreat. From up above, enjoy magnificent views of BumiLuhur's natural beauty, creating an ideal setting to rest and unwind. This space offers a tranquil escape, allowing you to immerse yourself in the serene surroundings while spending quality time with loved ones.



FLOOR PLAN

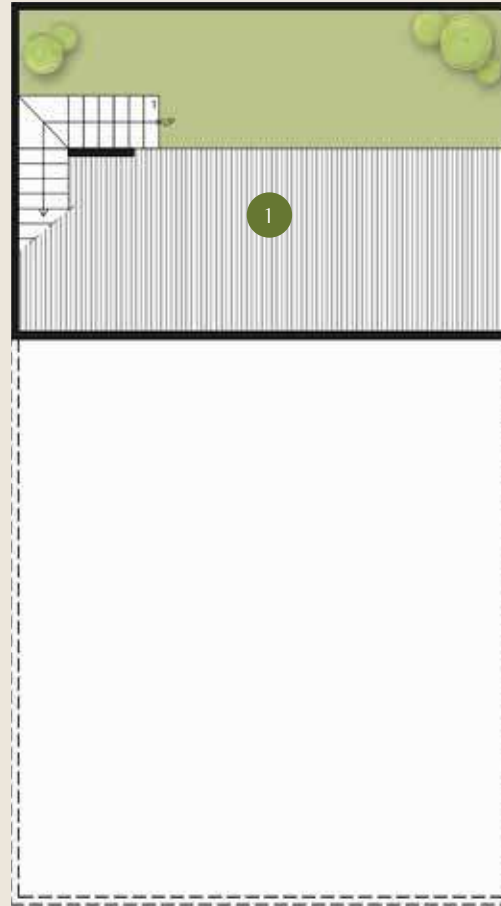
Wisasa Asri

Building Area 220 m²

Land Area 180 m²



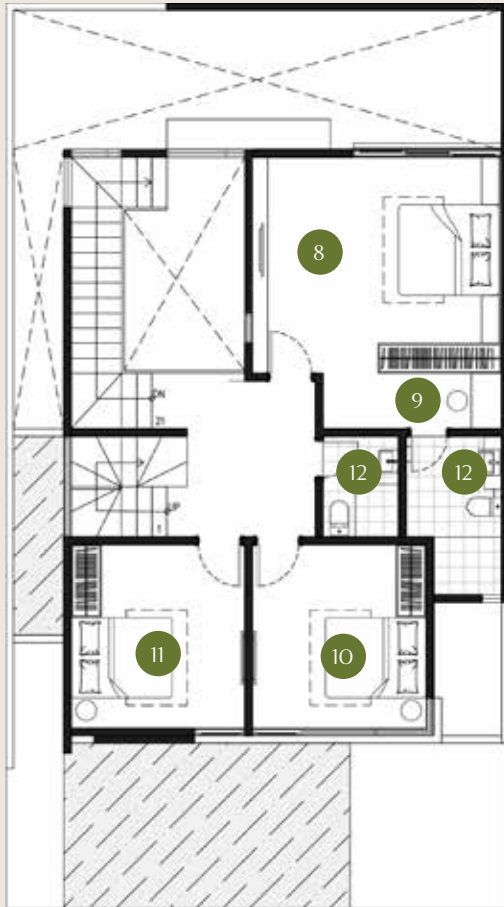
- 1 Terrace
- 2 Living
- 3 Dining
- 4 Kitchen
- 5 Powder Room
- 6 Foyer
- 7 Terrace



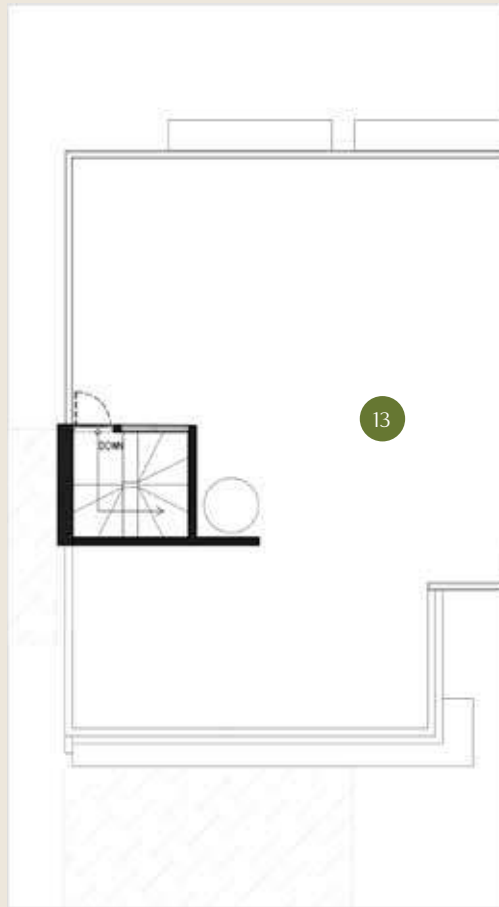
1st



2nd Ground Floor



3rd



Roof Top

- 8 Master Bedroom
- 9 Walk In Closet
- 10 Bedroom 1
- 11 Bedroom 2
- 12 Bathroom
- 13 Roof Top



Wisesa Asri A

Wisesa Asri A House combine elegance with practicality. Each home is designed to ensure maximum comfort for its residents. With spacious living areas and high-quality finishes, these homes provide a luxurious living experience. The backyard is beautifully landscaped, offering a peaceful retreat with stunning views.

The interiors are designed with attention to detail, featuring modern conveniences and ample natural light, making every corner of the home inviting and functional. The thoughtful layout ensures that every space is utilized efficiently, creating a harmonious living environment.

FLOOR PLAN

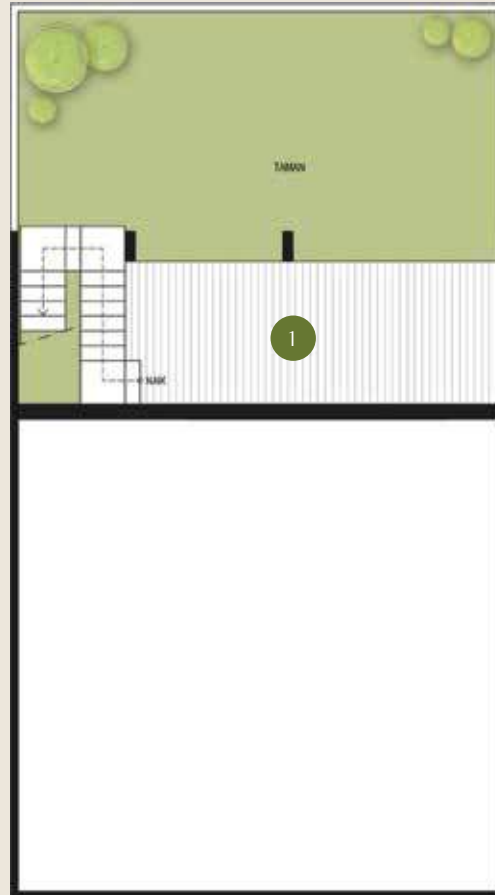
Wisasa Asri A

Building Area 180 m²

Land Area 180 m²



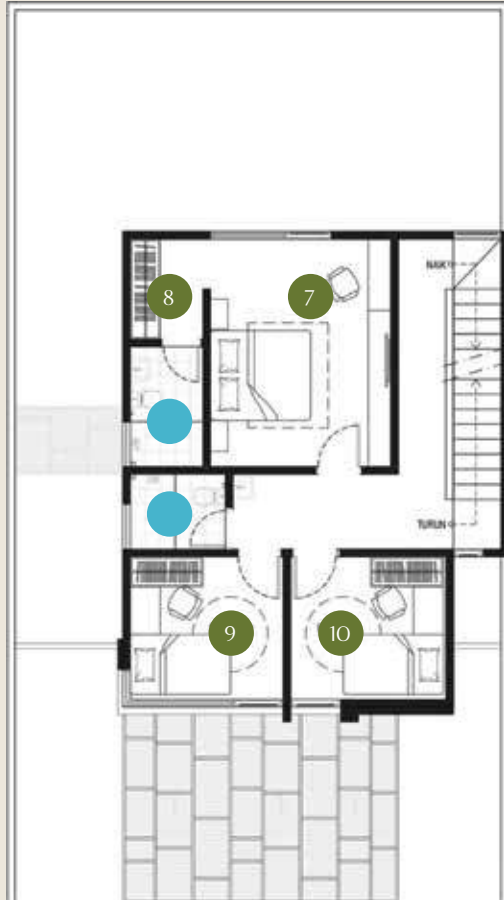
- 1 Terrace
- 2 Living & Dining
- 3 Bedroom / Working Space
- 4 Kitchen
- 5 Foyer
- 6 Terrace
- Bathroom



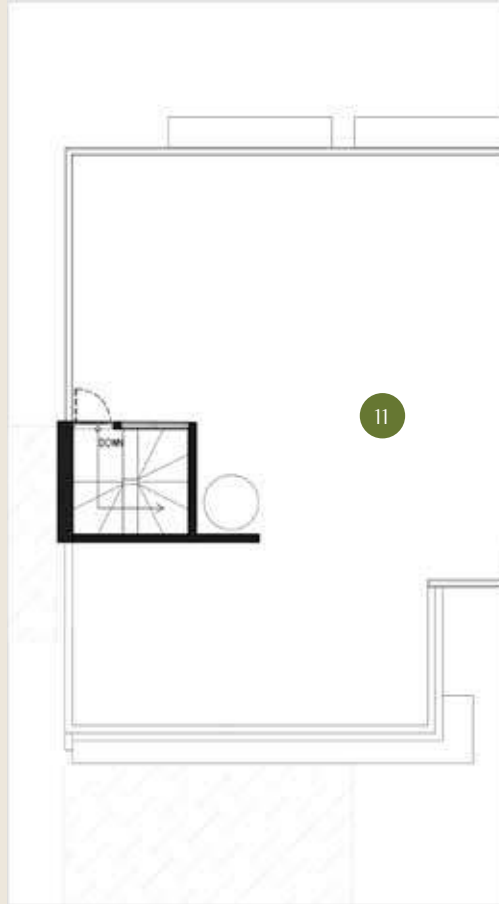
1st



2nd Ground Floor



3rd



Roof Top

- 7 Master Bedroom
- 8 Walk In Closet
- 9 Bedroom 1
- 10 Bedroom 2
- 11 Roof Top
- Bathroom

Wisesa Asih

Wisesa Asih House engaging designs with expansive living spaces. Each home is designed to maximize natural light and embrace the surrounding landscape. These homes are developed to offer both luxury and comfort, with high ceilings and large windows that frame the beautiful views. The living areas are open and airy, providing a perfect setting for both relaxation and entertainment.







100





The lush gardens and thoughtfully designed outdoor spaces enhance the overall living experience, creating a harmonious blend of indoor and outdoor living. Every aspect of the Wisesa Asih House is precisely designed to provide a remarkable living experience, ensuring both aesthetic appeal and functional excellence.





Discover tranquility in the master bedroom of this inviting hilly house. Its wide space and cozy, intimate atmosphere make it an ideal haven for rest. The room is designed to be a peaceful retreat, providing a perfect blend of comfort and relaxation. Enjoy the serene environment and spacious layout, creating a personal sanctuary just for you.



Discover the charm of this rooftop oasis, designed as a serene spot for family gatherings and relaxation. With its magnificent views from up above, you can truly appreciate the beauty of BumiLuhur's nature. This inviting space offers a perfect blend of comfort and tranquility, making it an ideal place to rest and enjoy the great outdoors with your loved ones.





FLOOR PLAN

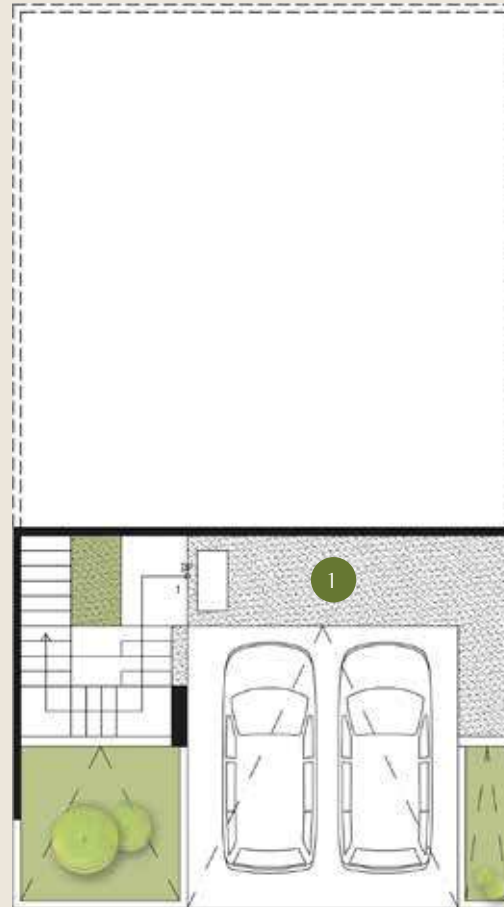
Wisasa Asih

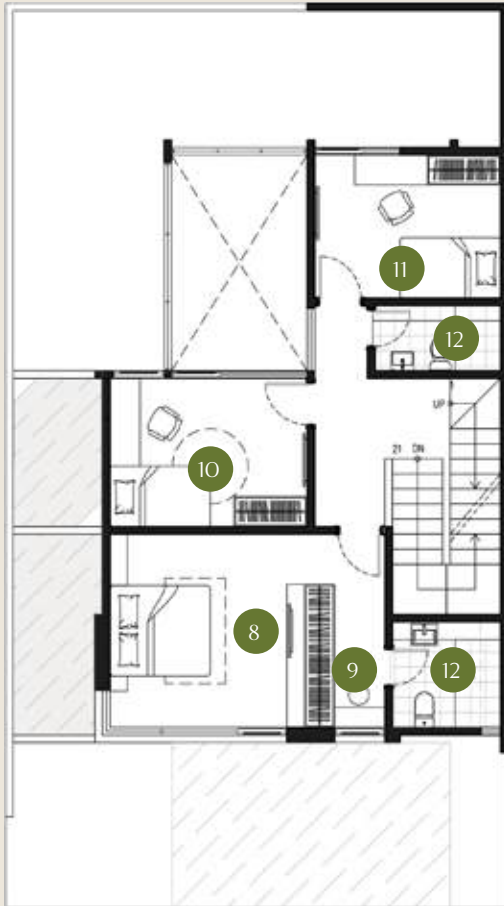
Building Area 205 m²

Land Area 180 m²

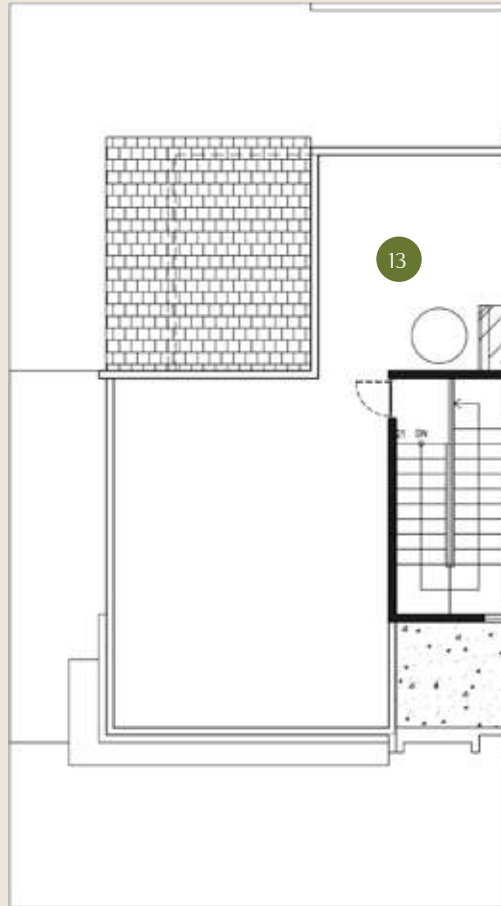


- 1 Terrace
- 2 Living
- 3 Dining Terrace
- 4 Kitchen
- 5 Powder Room
- 6 Foyer
- 7 Balcony





3rd



Roof Top

- 8 Master Bedroom
- 9 Walk In Closet
- 10 Bedroom 1
- 11 Bedroom 2
- 12 Bathroom
- 13 Roof Top

Wisesa Asih A

Wisesa Asih A House engaging designs with expansive living spaces. Each home is designed to maximize natural light and embrace the surrounding landscape. These homes are developed to offer both luxury and comfort. The living areas are open and airy, providing a perfect setting for both relaxation and entertainment.

The lush gardens and thoughtfully designed outdoor spaces enhance the overall living experience, creating a harmonious blend of indoor and outdoor living. Every aspect of the Wisesa Asih A House is precisely designed to provide a remarkable living experience, ensuring both aesthetic appeal and functional excellence.



FLOOR PLAN

Wisasa Asih A

Building Area 180 m²

Land Area 180 m²



- 1 Terrace
- 2 Living & Dining
- 3 Bedroom / Working Space
- 4 Kitchen
- Bathroom





3rd



Roof Top

- 5 Master Bedroom
- 6 Bedroom 1
- 7 Bedroom 2
- 8 Balcony
- 9 Roof Top
- Bathroom

SECTION



Wisesa Asih

----- ROW 10 -----

Wisesa Asri

KEYMAP

TATAR SURAWISESA





EDUCATION

Akademi Bahasa Asing Internasional
 Al-Irsyad Satya Islamic School
 Bale Seni Barli
 Bandung Alliance Intercultural School
 Bina Persada School
 BPK Penabur School
 Cahaya Bangsa Classical School
 Damian School
 Sundial Science Center
 Universitas Kristen Maranatha
 Universitas Santo Borromeus

BANK

BCA
 CIMB NIAGA
 OCBC
 BNI
 MANDIRI
 BJB

HEALTH

RS. Cahya Kawaluyan
 RSIA Parahyangan
 Zen Reflexiology

SPORT & RECREATION

Bumi Pancasona Sports Club
 Bicycle Lane

Mason Pine Hotel
 Parahyangan Golf
 Tepi Danau
 Wahoo Waterworld

SHOPPING & GROCERIES

IKEA Store
 Pasar Parahyangan
 Yogya Junction Kota Baru Parahyangan

PUBLIC FACILITIES

Al-Irsyad Satya Mosque
 Fire Station
 Police Station
 Pertamina Gas Station
 Santo Benedictus Church
 Shuttle Bus Damri
 Shuttle Bus Trans Metro Pasundan
 Shuttle Car KBP to Padalarang Whoosh Station
 Shell Gas Station
 SPKLU & Green Spine at Bumi Hejo

CULINARY

Ambrogio Patisserie
 Baby Dutch Pancake
 Eastern Restaurant
 Giggle Box
 Karnivor
 Kopi Nako

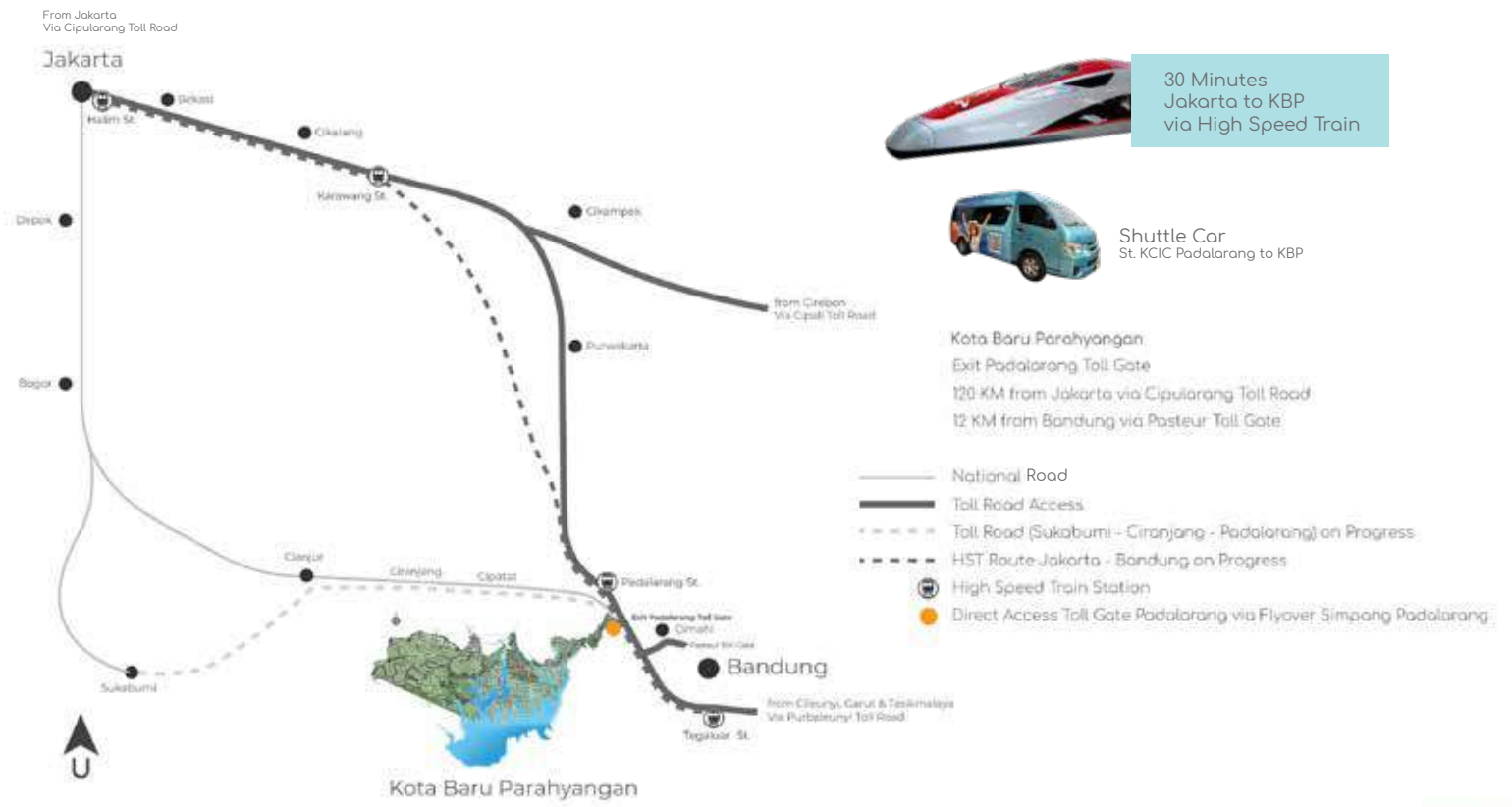
Kota Baru Food Market at Bale Pare
 La Pantry
 Mc Donald's
 Royal Pho
 Starbucks

BUMI HEJO

Bumi Skate Park
 Bumi Play Park
 Casa by Lesavoye
 Green Spine
 Noah's Barn
 Shopping Arcade
 Suki Time Grill Time
 Urban Park

BALE PARE

Bike Park
 KFC
 Kota Baru Food Market
 Pizza Hut





PT BELA PARAHYANGAN INVESTINDO

Bumi Indraprasta - Home & Living Center

Jl. Panyawangan Kav. 6-B No. 6

Kota Baru Parahyangan

Padalarang, Jawa Barat

Seluruh isi dalam website gambar, kata-kata, layout unit yang tercantum pada website ini adalah ilustrasi atau gambaran semata dan tidak dapat dijadikan perikatan secara hukum. Kota Baru Parahyangan beserta seluruh agen pemasarannya mengingatkan bahwa setiap pernyataan, informasi maupun data yang tercantum dalam website ini dapat mengalami perubahan sejalan dengan proses perencanaan Arsitektur yang berkesinambungan.