



CHESTER

BRINGING NATURE HOME

## ENVISION THE FREEDOM OF LIVING

*In addition to its ancient roots as a symbol of love, harmony, joy and wellness, the hummingbird is also representative of vibrancy, playfulness, positive energy, abundance, lightness and freedom.*

*Chester represent a symbol of the vibrancy of life, freedom, unite with nature and gives you positive energy, we present you not just a house, but a serenity place that you can call home ...*





We present another Luxurious Residence, a Brand New Cluster as part of Wisata Bukit Mas's area with approximately 100Ha.

ESTATE  
SPANNING  
approximately  
**100Ha**

**18+**  
CLUSTER  
SHOPHOUSE  
COMMERCIAL  
AREA

More than  
**2500+**  
RESIDENTS

An ideal natural residential concept with a dozens of facilities and strategically located in the heart of West Surabaya.



## LOCATED IN CENTRAL BUSINESS DISTRICT WEST SURABAYA

- 0 minutes from  
 Surabaya Grammar School, RSIA IDAF
  
- 5 minutes from  
 UNESA, Petra Christian University, UBAYA, SPIN School,  
 Petra Christian School and National Hospital
  
- 5 minutes from  
 Supermall & Pakuwon Trade Center, Fairway 9 Mall,  
 the Spazio, the Loop, Ranch market and Hokky Supermarket
  
- 5 minutes from  
 International Golf Range
  
- 10 minutes from  
 Dermo Satelit Toll Road, Gunung Sari Toll Road  
 and SUMO (Surabaya-Mojokerto) Toll Road

WBM  
MAIN  
GATE

The image shows an aerial view of a residential development. A prominent red banner runs horizontally across the middle. Three callout boxes are overlaid: 'WBM MAIN GATE' on the left, 'A BRAND NEW CLUSTER' in the center, and 'WBM CLUB HOUSE' on the right. A road labeled 'PADA MENGANTI' is visible on the left. The background shows a cityscape under a hazy sky.

PADA  
MENGANTI

A BRAND  
NEW CLUSTER

FUTURE MWRR

WBM  
CLUB  
HOUSE

RAYA MENGANTI ( Roadway Expansion to 40 meters)

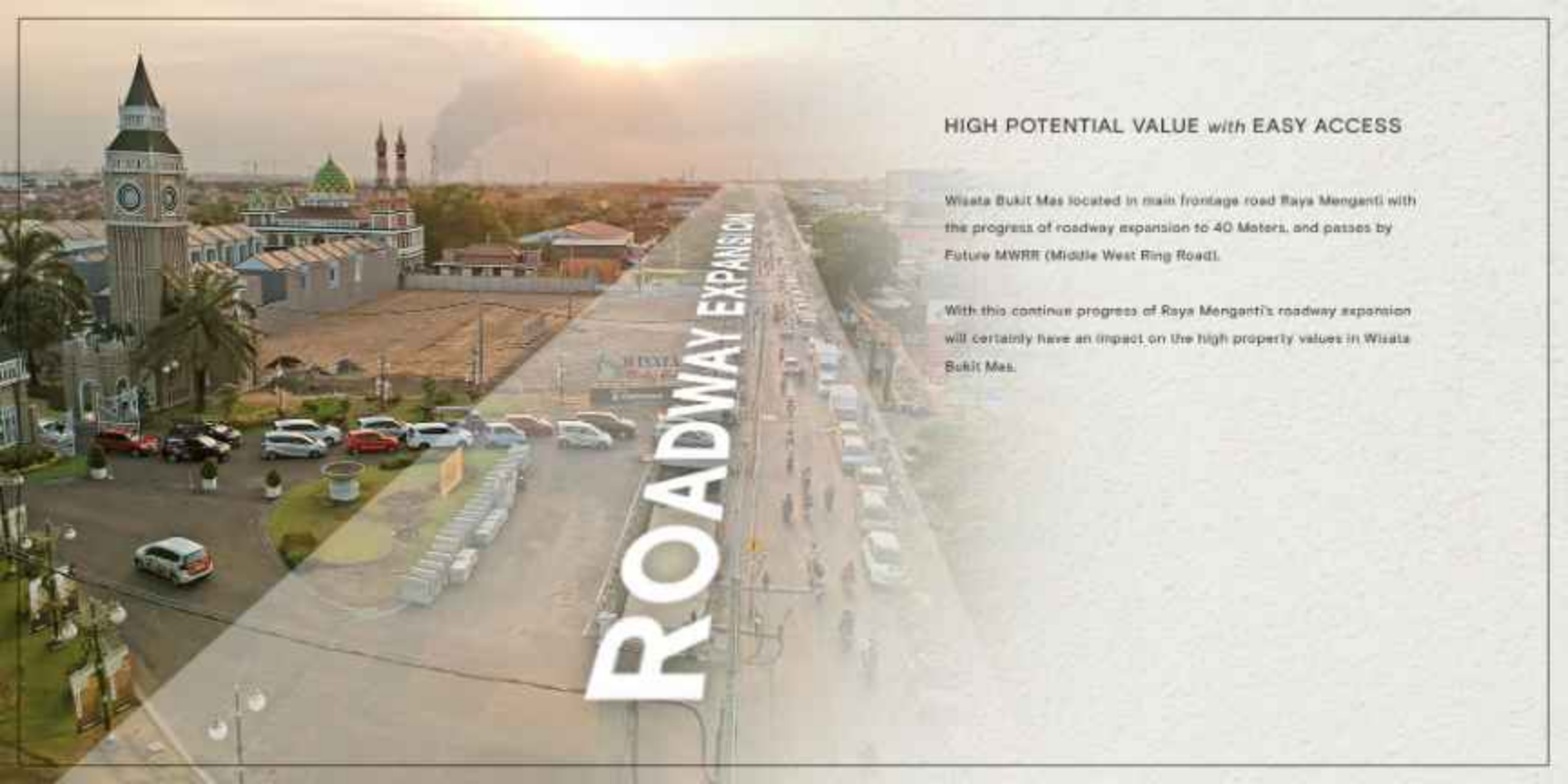


FUTURE MWRR (Middle West Ring Road)

## SITEPLAN

Our Brand New Icon - CHESTER located just step away from the main gate Wisata Bukit Max, integrated to restaurants, hospital, business district and school. This residence not only for your serene sanctuary from the rushes society of the city, it also has a strong rental and capital growth potential as well

Inspired by the historic city in Europe, CHESTER's surroundings provide you with stunning ambience of Europe, famous buildings are located on your doorstep. We give you an extraordinary living that you never dreamed of -



ROADWAY EXPANSION

## HIGH POTENTIAL VALUE *with* EASY ACCESS

Wisata Bukit Mas located in main frontage road Raya Menganti with the progress of roadway expansion to 40 Meters, and passes by Future MWRR (Middle West Ring Road).

With this continue progress of Raya Menganti's roadway expansion will certainly have an impact on the high property values in Wisata Bukit Mas.

EMBRACE THE VIBRANCE OF LIVING







Spending time in outdoor activities, especially in green spaces, is one of the fastest ways to improve your health and happiness.

DOZENS  
FACILITIES

OUTDOOR  
RECREATION

HEALTHIER  
LIFESTYLE

Enjoy coming home to a green natural residence, a home with dozens facilities. Free your mind and grow your inner peace.



## INFINITE 360° WELLNESS HUB

Enjoy the infinite healthy facilities surrounding natural environment that focuses on people health and well-being, fosters healthy and safe communities.



## HARMONIOUS GREEN BELT PARK

Enjoy walking in the harmonious park, along side of a green lush garden and walkable business district.





## HAVEN CULTURAL PARK

Find your finest moment in open space Cultural Club.

Reconnect with nature, embrace your vibrant lifestyle and experience a living like never before.





## OPEN-AIR MINI AMPHITHEATER

The design is aimed to brought the communities together with the surrounding nature, creating a more immersive experience for their viewers. Find your happiest moment in open-air ini Amphitheater. Bonding together with your families and friends.



TRANQUILITY WORK LIFE BALANCE





Our purpose is to bring tranquility at your home after the hustle and bustle of modern city.

NATURAL  
RESIDENCE

SERENITY  
PLACE

INNER  
PEACE

Welcome to serenity place with new, modern facade, thoughtful features, ideal location, in-step with how you want to live, work and play.



## CHESTER

We're craving the tranquility of the natural world now more than ever. The past few years have seen us turn to and appreciate nature more than before.

In our fast-paced city lives, nature can be refreshingly slow, patient, and predictable. The simple joys of discovering breathtaking urban oases at your residence, listen to birds chirping, or watching as the leaves reach out towards the sun, help us to feel grounded, calm, and in control.

Our desire to reconnect with nature has never been stronger than before. In an ever-increasingly urbanized and technologically-driven world, this reconnection to eco-friendly residence can have a huge impact on mental health, helping people to de-stress and relax, to become more at one with your inner peace —



# THE Hummingbird

## TYPE 6

Built-in 6x16 sqm of land with new dynamic multifunction space concept, a house of 4 bedrooms with spacious sky deck and smart home





FIRST FLOOR



SECOND FLOOR

# THE Hummingbird

TYPE 6 x 16 | land 96 building 122

-  4
-  1 day bed
-  3
-  1 sky desk
-  2



# THE *Canary*

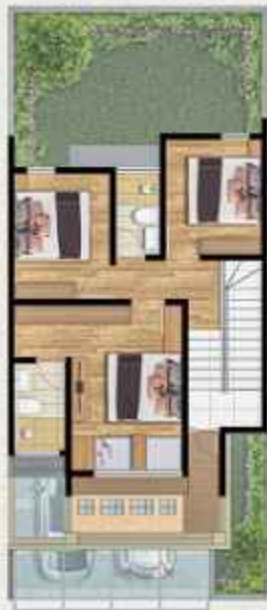
## TYPE 7

Built-in 7x16 sqm of land with bigger space are meant to reflect the essence of modern living, the large spacious sky deck providing elevated experience





FIRST FLOOR



SECOND FLOOR

# THE *Canary*

TYPE 7 x 16 | land 112 building 128



4



1 day bed



3



1 sky deck



2



LIVING IN HOME WITHOUT BOUNDARIES





REVEAL YOUR NEW WAY OF LIVING



## SPACIOUS LIVINGROOM

The design is aimed to brought natural light into your home, with a big windows and high ceilings. Enjoy your optimal air circulation and natural comfortable lighting.





## DRY KITCHEN

The concept is to bring an open pantry that aligned with a cool dining area that aimed to brought a warm and elegant ambience into your home.





## MULTIFUNCTION BACKYARD

The concept of a wide multi-purpose space which gives you entirely freedom to be creative to meet your needs and desires about an ideal home.





## WIDE OPEN SKY DECK

The design is to create your own oasis of peace and beauty living in your own space. This wide open sky deck can turn into a stylish part of your home.





## MASTER BEDROOM *with* DAY BED

The concept is to add more personal spaces into your room. It is aimed to providing elevated experience to your personal inner growth.





## COMES *with* FOUR BEDROOMS

The concept is to give you the perfect plan to suit your family's needs. Architecturally designed with intelligent orientation and always make the most of natural light, airy spaces and cosy room for every family's member.



OWN A NEW CHAPTER IN YOUR LIFE



*only*

**25** JUTA

*be the first one to get the benefit*

TRANSFER KE REKENING

**BCA 087 030 7373**

a/n PT BINAMAJU MITRA SEJATI





**sinarmas land**  
Building for a better future

## MARKETING GALLERY

COLOSSEUM CLUB HOUSE - WISATA BUKIT MAS  
RAYA MENGANTI LIDAH WETAN - WIYUNG - SURABAYA



Wisatabukitmas



wisatabukitmas

Data yang terlampir berdasarkan situasi dan kondisi pada masa persiapan, perubahan dapat terjadi sewaktu-waktu dan merupakan hak penuh developer