



Garden Villa



Exclusive Low Rise Apartment In South Jakarta



Developed by

ASTRALAND
INDONESIA
ASTRA PROPERTY • HONGKONG LAND



Concept & Philosophy

A resort-feel private low-rise residential, hidden and secluded in the midst of buzzing Jakarta city lifestyle. Incorporating sophisticated facade design, that emphasizes modern and sleek look with combination of modular pattern and vertical screen symbolize local Indonesian architecture of Krepyak screen concept.

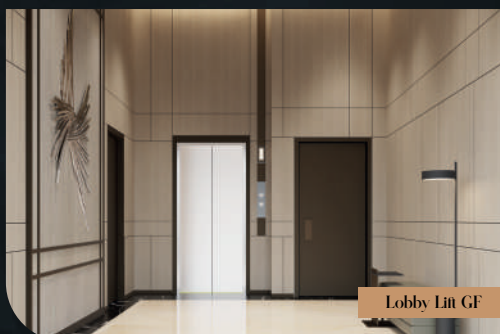
Adding to the luxury concept, exclusive roof top pool deck and facility raised above the surrounding low rise with direct unobstructed view towards mountains.



Building Section Visualization



Interior



Lobby Lift GF



Dining Room



Master Bedroom



Living Room

Exclusive Facilities



Experience the lifestyle that brings tranquillity to resident's mind, body and soul.

- ◆ Sky Gym
- ◆ Barbecue Pit
- ◆ Children Playground
- ◆ Olympic Length Sky Pool
- ◆ Kids Pool
- ◆ Floating Cabana
- ◆ Multifunction Room
- ◆ Rooftop Pool





Unit Layout

Studio

0 1 2 3 5m



2ND
2L



NFA 30 SQM

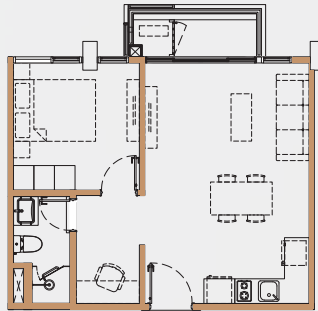
SGFA 39 SQM

1 Bedroom

0 1 2 3 5m



2ND
2L



NFA 49 SQM

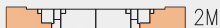
SGFA 65 SQM

2 Bedroom

0 1 2 3 5m



2ND
2L



2M



NFA 76 SQM

SGFA 102 SQM

3 Bedroom

0 1 2 3 5m



GF



NFA 97 SQM

SGFA 127 SQM



Arumaya Marketing Gallery:

Jl. Lebak Bulus Raya 1, Cilandak Jakarta Selatan

Marketing Office:

ARUMAYA.CO.ID | contact@arumaya.co.id

DISCLAIMER

Neither the Developer nor its agents will be held responsible for any inaccuracies or omissions in the information contained in this brochure. The Developer does not accept responsibility for any errors or omissions or for any losses suffered by any person or legal entity resulting from the use of the information contained in this brochure, howsoever caused. The statements, visual representations, models, show units, displays and illustrations, photographs, art renderings and other graphic representations and references are intended to portray only artistic impressions of the development and décor and cannot be regarded as accurate or representations of fact. All areas and other measurements are approximate measurements and are subject to change and final survey. All plans and models are not to scale unless expressly stated and are subject to amendment. All information, specifications, renderings, visual representations, measurements and plans are subject to change as may be required by us and/or the relevant authorities. The Conditional Sale and Purchase Agreement (CSPA, also known as a PPJB) shall form the entire agreement between the Developer and the Purchaser and shall supersede all statements, representations or promises made prior to the signing of the CSPA and shall in no way be modified by any statements, representations or promises made by us or our agents which are not embodied in the CSPA, whether before or after the signing of the CSPA. Any explanation concerning the CSPA and the development is for information purposes only and it is recommended that potential Purchasers seek independent legal advice with regard to the proposed purchase.