



CITRALAND CITY
THE WATERFRONT CBD
CPI - MAKASSAR



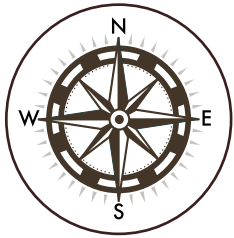
AZURÉ
APARTMENT



AZURÉ

/ˈaZHər.e/

The first *low rise* apartment in
Makassar with sea view



LEGEND

- | | |
|------------------------|-------------------------|
| 1. Universitas Ciputra | 19. Coral Bay |
| 2. Ciputra World Mall | 20. Astoria Bay |
| 3. Ciputra Hospital | 21. Marina Bay |
| 5. Commercial | 23. Marina Club |
| 6. Business Park | 25. Wisma Negara |
| 7. Golden Avenue | 26. Twin Tower Makassar |
| 8. IPEKA School | 27. Rumah Sakit |
| 9. Hotel | 28. Hutan Kota |
| 10. Sunset Quay | 29. Masjid 99 Kubah |
| 11. Business Loft | 30. Lego-Lego |
| 12. Treasure Island | 31. Pantai Losari |
| 15. Club House | 32. Pulau Lae-Lae |
| 16. Sunset Cove | 33. Delft Apartment |
| 17. Sunset Cove 8 | 34. Azure Apartment |
| 18. Victoria Island | |

- | | | |
|---|--|--|
|  CitraLand City Makassar |  Future Development |  Lahan Pemerintah
Prov. Sulawesi Selatan |
|---|--|--|



NESTLED IN A PRIME LOCATION



6 FLOOR APARTMENT WITH SEMI-BASEMENT



SPECIFICATION

FLOOR

- Bedroom, Living & Dining** : 80x80 Granite Tile
- Bathroom** : 60x60 Granite Tile
- Balcony** : 60x60 Granite Tile

WALL

- External** : Concrete panel wall with paint finish. Ex. Jotun or equivalent
- Internal** : Lightweight brick with emulsion paint finish. Ex. Mortar Utama or equivalent, Jotun or equivalent
- Internal Unit** : Drywall with paint finish. Ex. Mortar Utama or equivalent, Jotun or equivalent
- Bathroom** : Lightweight brick with 60x60 Granite Tile
- Balcony** : Lightweight brick with emulsion paint finish. Ex. Mortar Utama or equivalent, Jotun or equivalent
- Balcony Railing** : Stainless with tempered glass

CEILING

- Bedroom, Living & Dining** : Gypsum board with emulsion paint finish. Ex. Jayaboard or equivalent, Jotun or equivalent
- Bathroom & Balcony** : Water-resistant gypsum board with emulsion paint finish. Ex. Jayaboard or equivalent, Jotun or equivalent

DOOR

- Main Entrance** : Solid Engineering Door. Ex. Tropica or equivalent
- Unit** : Engineering Door Ex. Tropica or equivalent
- Balcony** : Aluminium with Sunergy Glass. Ex. YKK or equivalent

WINDOW

- External & Balcony** : Aluminium with Sunergy Glass. Ex. YKK or equivalent

KITCHEN

: Installation only

BATHROOM & SANITARY

: Ex. GROHE or equivalent

OTHER

- Electric power supply** : 3500VA (2BR) ; 5500VA (3BR) ; 6600VA (PENTHOUSE)
- Light fitting** : Ceiling Rose only
- Telephone** : Line only
- Water Supply** : PDAM
- Fire protection system** : Sprinkler, smoke/heat detector
- Building Security System** : CCTV & Access Card at Lobby
- Ratio parking** : 1:1

KEYPLAN



LANTAI 1

01	2BR - B	06	3BR - A - GARDEN	09	3BR - E
02 - 03	2BR - A	07	3BR - B - GARDEN	10	2BR - D
05	3BR - C	08	3BR - D - GARDEN	11	2BR - C - GARDEN

Semua data yang tercantum adalah benar adanya berdasarkan situasi pada masa persiapan. Dengan semua kesalahan cetak dikecualikan. Developer berhak mengadakan perubahan sewaktu-waktu tanpa mengurangi kualitas sesuai dengan dengan kondisi di lapangan tanpa pemberitahuan terlebih dahulu

KEYPLAN



LANTAI 2-5

01	2BR - B	06	3BR - A	09	3BR - E
02 - 03	2BR - A	07	3BR - B	10	2BR - D
05	3BR - C	08	3BR - D	11	2BR - C

Semua data yang tercantum adalah benar adanya berdasarkan situasi pada masa persiapan. Dengan semua kesalahan cetak dikecualikan. Developer berhak mengadakan perubahan sewaktu-waktu tanpa mengurangi kualitas sesuai dengan dengan kondisi di lapangan tanpa pemberitahuan terlebih dahulu

KEYPLAN



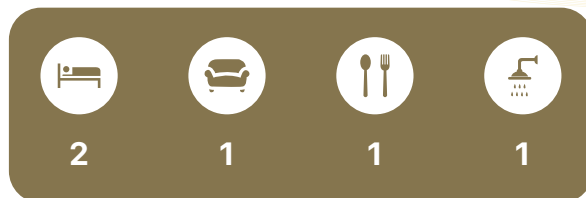
LANTAI 6

01	2BR - B	06	3BR - A	09	2BR - D
02 - 03	2BR - A	07	3BR - B	10	2BR - C
05	3BR - C	08	PENTHOUSE		

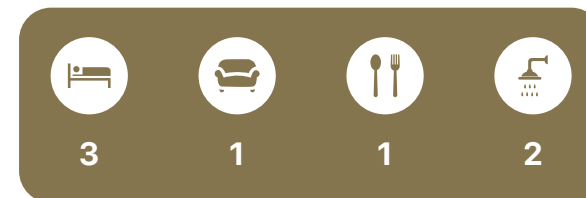
Semua data yang tercantum adalah benar adanya berdasarkan situasi pada masa persiapan. Dengan semua kesalahan cetak dikecualikan. Developer berhak mengadakan perubahan sewaktu-waktu tanpa mengurangi kualitas sesuai dengan dengan kondisi di lapangan tanpa pemberitahuan terlebih dahulu

BASIC TYPES

2 BEDROOM



3 BEDROOM



SPECIAL UNITS

ONE FLOOR ONLY

1ST FLOOR ONLY

2 BR C GARDEN



SGFA 80,6 M²
NFA 64,5M²

3 BR A GARDEN



SGFA 113,5 M²
NFA 90,8M²

1ST FLOOR ONLY

3 BR B GARDEN



SGFA 106,6 M²
NFA 85,3M²

3 BR D GARDEN



SGFA 118,9 M²
NFA 95,1M²

6TH FLOOR ONLY

THE PENTHOUSE



SGFA 262,4 M²
NFA 209,9 M²



3 + 1



1



1

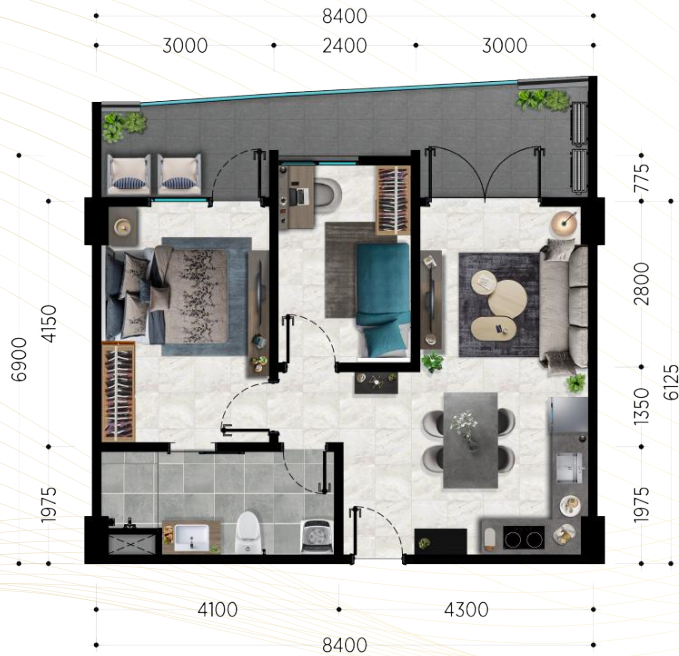


2 + 1

ALL FLOOR

2 BEDROOM

2 BR A



SGFA 77,7 M²
NFA 62,2 M²

2 BR B



SGFA 87,7 M²
NFA 70,1 M²

2 BEDROOM

2 BR C



SGFA 84,7 M²
NFA 67,8 M²

2 BR D



SGFA 91,5 M²
NFA 73,2 M²

3 BEDROOM

3 BR A



SGFA 127,3 M²
NFA 101,8 M²

3 BR B



SGFA 118 M²
NFA 94,4 M²

3 BEDROOM

3 BR C



SGFA 136,5 M²
NFA 109,2 M²

3 BR D



SGFA 123,9 M²
NFA 99,1 M²

3 BEDROOM

3 BR E



SGFA 129,5 M²
NFA 103,6 M²

FACILITIES

FACILITIES



POOL AREA



SEATING AREA



GARDEN



CITRALAND CITY

THE WATERFRONT CBD
CPI - MAKASSAR

MARKETING GALLERY

Jl. CitraLand Boulevard, No. 6
CitraLand City, Centre Point of Indonesia
www.citralandcitymakassar.com