

1 PARK HOMES

LOCATION

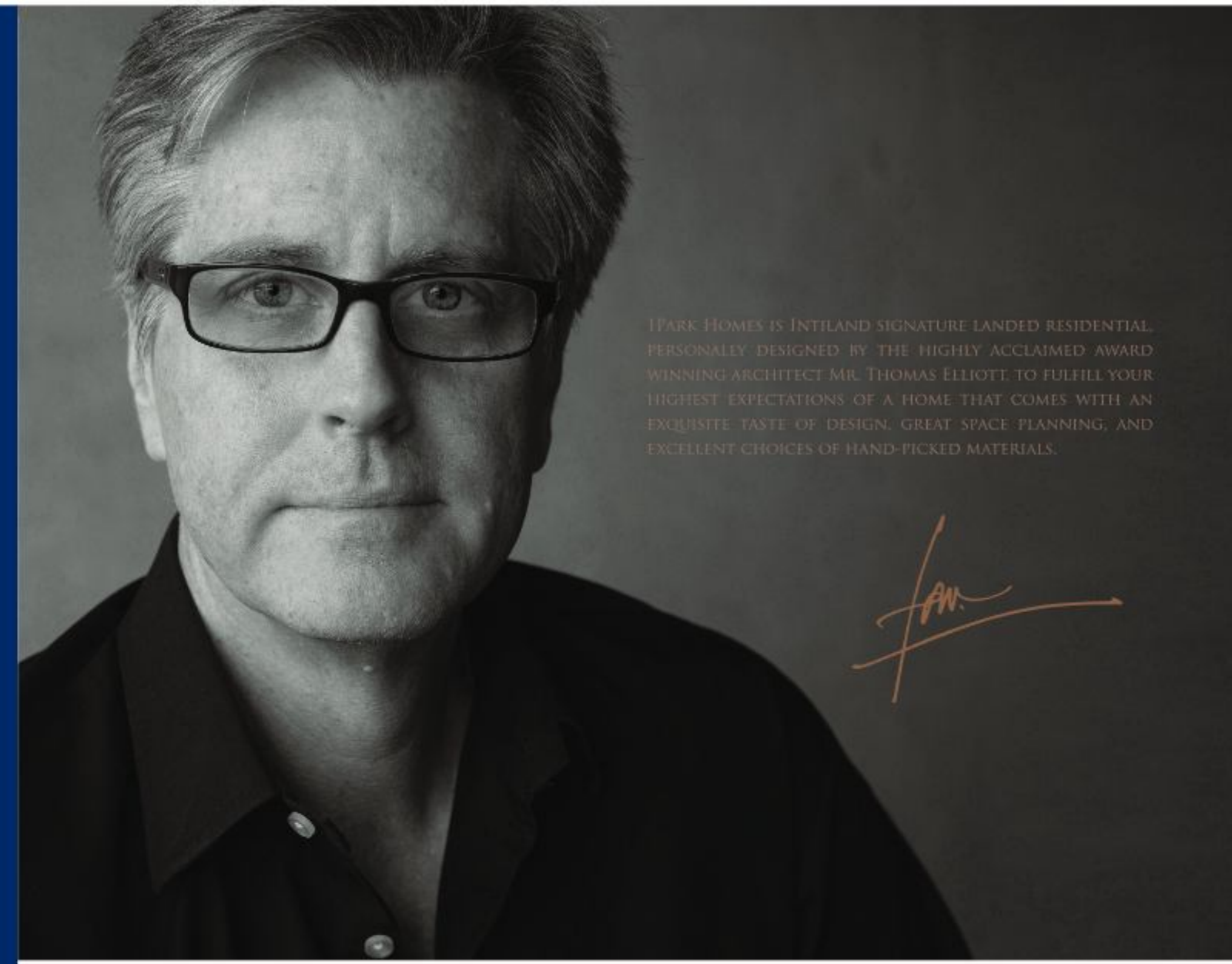
1PARK HOMES IS LOCATED RIGHT IN THE HEART OF SOUTH JAKARTA WHERE IT IS VERY STRATEGICAL TO GO TO ANY IMPORTANT DESTINATIONS AROUND JAKARTA. THE TREES THAT SURROUNDING OF 1PARK HOMES ARE TALL AND SHADY AND THE NEIGHBORHOOD IS CALM & QUIET BUT CHIRPING BIRDS THAT ARE SINGING TO BRIGHTEN YOUR DAY.

MARKETING OFFICE

MARKETING GALLERY 1PARK AVENUE
LOBBY TOWER ROYAL
JL. KH. M. SYAFEI HADZAMI NO. 1
KEBAYORAN, JAKARTA 12240

DISCLAIMER

INFORMATION CONTAINED IN THIS DOCUMENT IS SUBJECT TO CHANGES REQUIRED BY THE DEVELOPER AND/OR THE AUTHORITIES, AND HENCE DOES NOT FORM PART OF AN OFFER OR CONTRACT. THERE IS NO ASSURANCE THAT THE VIEWS CAPTURED IN THE PHOTOGRAPHS AND THE DATA WILL NOT CHANGE UPON COMPLETION OF THE PROJECT. VISUAL REPRESENTATIONS, DRAWINGS, DISPLAYS AND ART RENDERINGS ARE ARTIST'S IMPRESSIONS AND CANNOT BE REGARDED AS REPRESENTATION OF FACTS.



1PARK HOMES IS INTILAND SIGNATURE LANDED RESIDENTIAL, PERSONALLY DESIGNED BY THE HIGHLY ACCLAIMED AWARD WINNING ARCHITECT MR. THOMAS ELLIOTT TO FULFILL YOUR HIGHEST EXPECTATIONS OF A HOME THAT COMES WITH AN EXQUISITE TASTE OF DESIGN, GREAT SPACE PLANNING, AND EXCELLENT CHOICES OF HAND-PICKED MATERIALS.

THE CONCEPT

INSPIRED BY THE COLONIAL ERA, 1PARK HOMES BRINGS BEAUTIFUL GEORGIAN STYLE OF ARCHITECTURAL DESIGN INTO ITS DEVELOPMENT. WITH STYLE BORROWED FROM COLONIAL PERIOD HOUSES, 1PARK HOMES TRANSFORM THE STYLE INTO A LUXURIOUS GATED COMMUNITY ESTATE

WITH GRACE AND ELEGANCE OF A HOME YOU WILL LOVE. THEN WE ADD SOME COMFORT, PRIVACY, AND FACILITIES THAT ARE EQUAL TO THE HIGH-END CONDOMINIUM LIVING TO CREATE SUCH A QUALITY LIFE THAT WILL FIT YOUR HIGH EXPECTATION.



HOME IS WHERE THE STORY BEGINS



THE BEAUTIFUL SIGHT AND THERAPEUTICAL SOUND OF TWO WATERFALLS WILL WELCOME YOU HOME ON EACH SIDE OF THE GATE. A SYMBOL OF DOUBLE HAPPINESS FOR YOUR NEW LIFE BEGINS RIGHT AT THE STEP OF THE GATE.



PARK HOMES LANDSCAPE DESIGN COMBINES NATURE AND CULTURE; FUNCTION AND VISUAL. IT BRIDGES THE SPACE BETWEEN ARCHITECTURAL DESIGN AND THE LIVING QUALITY EXPECTATIONS. HERE, WE DEVELOP AN ENVIRONMENT TO BECOME AS NATURAL AND PEACEFUL HOME AS IT COULD BE WHERE EVERYONE CAN ENJOY THE BEST LIFE IT COULD BRING.

PARK 10

LAND SIZE : 200 SQM
BUILDING SIZE : 360 (339) SQM



LOWER GROUND



GROUND



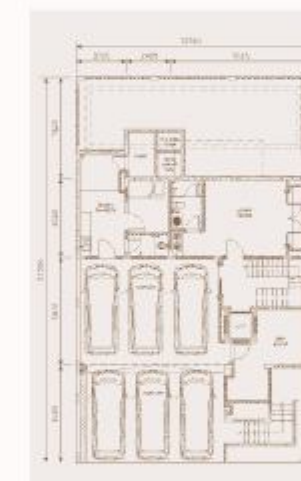
UPPER GROUND



ATTIC

PARK 12

LAND SIZE : 267.5 SQM
BUILDING SIZE : 420 (390) SQM



LOWER GROUND



GROUND

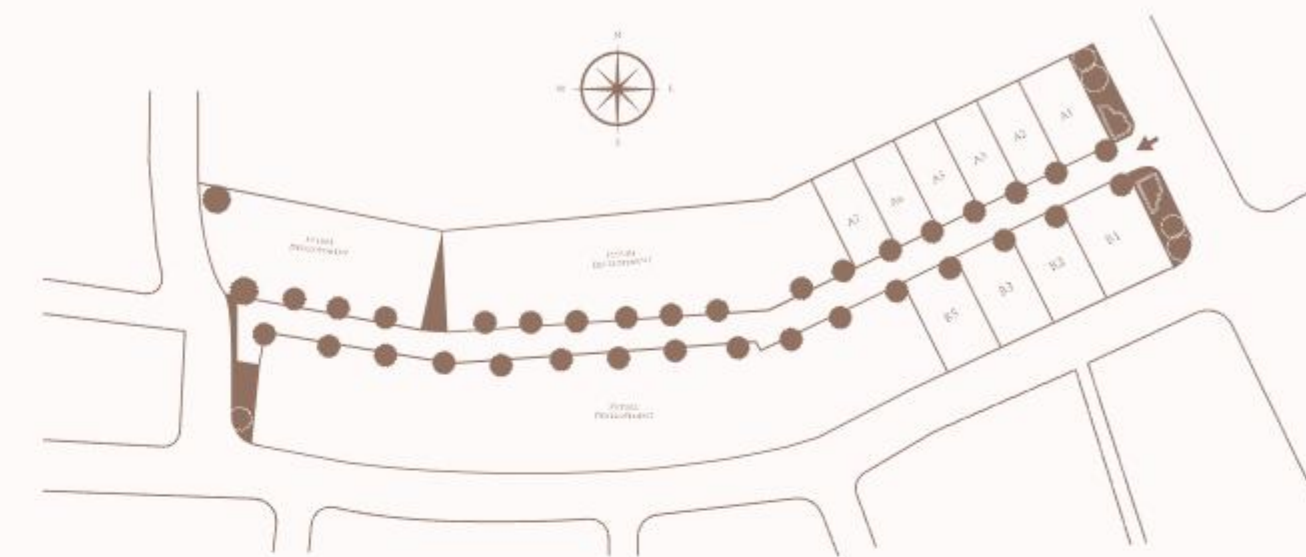


UPPER GROUND



ATTIC

MASTERPLAN



PARK HOMES IS DEVELOPED ON 1.2 HA OF LAND WHERE THE HOUSES IS SEPARATED BY A 8.8 M WIDE PATHWAY, CREATING A SIMPLE YET EXCLUSIVE ESTATE FOR YOU TO LIVE IN IT.



GENERAL FACILITIES

- DEDICATED GUEST PARKING AREA
- 24-HOUR SECURITY

EACH HOUSE FACILITIES

- PASSENGER LIFT
- CCTV IN COMMON AREAS
- INTERCOM (CONNECTED TO THE GUARD HOUSE)
- PANIC BUTTON (CONNECTED TO THE GUARD HOUSE)
- SWIMMING POOL
- ELECTRICITY BACKUP GENERATOR
- TOTAL 4 PARKING LOTS FOR PARK 10
- TOTAL 6 PARKING LOTS FOR PARK 12