



FIFTY SEVEN PROMENADE



The integrated nature of the promenade creates seamless connectivity throughout and a lively waterfront neighbourhood environment.

The Very Best That Jakarta has to offer on your doorstep.

Fifty Seven Promenade meticulously curates luxury waterfront living at a one of a kind city centre location. Unrivalled convenience with the cities best luxury malls, business and transport hubs in close proximity you are guaranteed the best in shopping, dining and entertainment.

The best of both worlds; the unique promenade concept is at the core of this exclusive property, inspired by the worlds iconic waterfront landmarks, it provides a natural sanctuary from the hustle and bustle of urban life and brings a sedate, breezy coolness that promotes clean outdoor living in a vibrant cosmopolitan neighbourhood.



Bringing you closer to it all.

Business

1. The Plaza
2. Menara BCA
3. UOB Plaza
4. BNI 46
5. World Trade Centre

Embassies & Consulates

1. Embassy of Japan
2. Embassy of France
3. Embassy of Germany
4. Embassy of United Kingdom

Transport

1. LRT
2. Airport Railink
3. MRT

Shopping & Retail

1. Plaza Indonesia
2. Grand Indonesia

International Hotels

1. The Keraton Luxury Collection
2. Pullman Hotel
3. The Grand Hyatt
4. Hotel Indonesia Kempinski Jakarta
5. Mandarin Oriental Hotel
6. Shangri-la Hotel

Dining & Entertainment

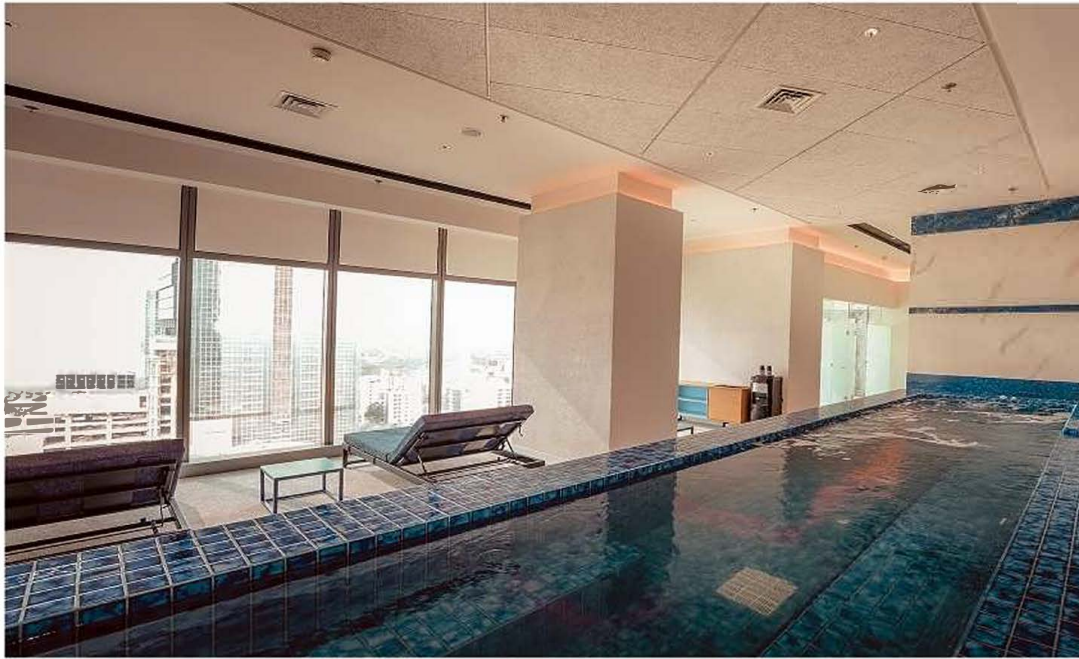
1. SKYE Bar & Restaurant
2. Cafe Milano
2. Union Bistro
2. Haidilao
3. Osteria Gia
3. Angus House
3. Cork and Screw

The city on your doorstep

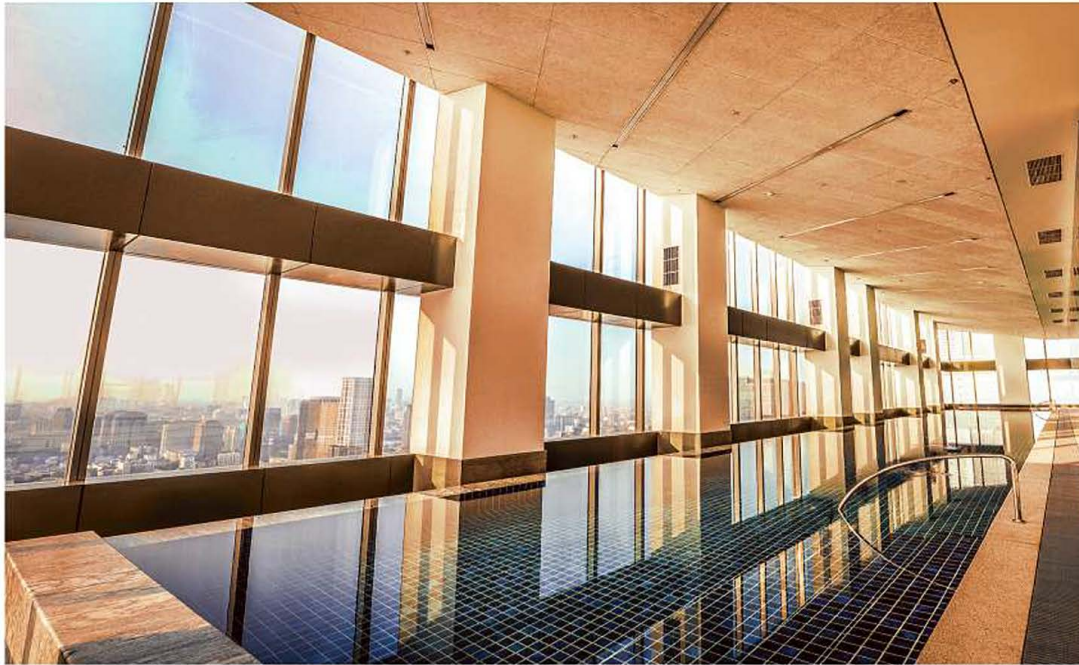
www.57promenade.com



The exclusive residence lounge, featuring the best in entertainment and business facilities.



The private spa area and jacuzzi overlooking the city from the 23rd floor.



Indoor pool located on the 59th floor is the crowning jewel of Sky57.

A holistic development carefully crafted to bind luxury living with an active lifestyle, with its waterfront promenade boasting an array of indoor and outdoor facilities and exclusive sky top amenities creating the pinnacle of modern luxury living.

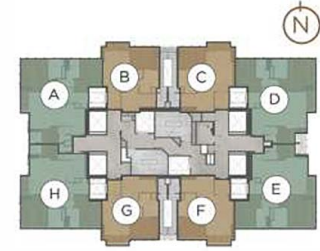
- Promenade
- Sky Garden
- Sky Lounge
- Private Dining Room
- Entertainment Area
- Business Suite
- Function Room
- Gym & Yoga Corner
- Spa, Sauna & Jacuzzi
- Semi Outdoor Pool
- Kids Pool
- Indoor Pool
- Children Play Area
- Convenience Store
- Alfresco Cafe & Lounge

SKY57

8 UNITS PER FLOOR, FLOOR 2 TO 21



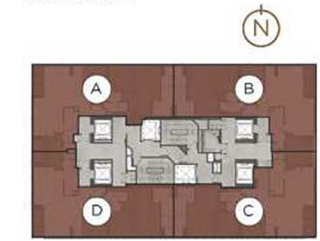
Sky57
(B,C,F,G)
1 Bedroom
SGA 81.91 m²



Sky57
(A,D,E,H)
2 Bedroom
SGA 115.48 m²

Sky57
3 Bedroom
SGA 182.91 m²

4 UNITS PER FLOOR, FLOOR 25 TO 55

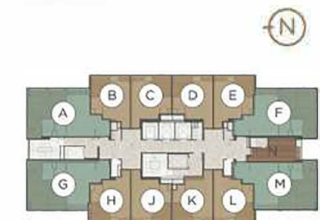


CITY57

13 UNITS PER FLOOR, FLOOR 2 TO 21



City57
(B,C,D,E,H,J,K,L)
1 Bedroom
SGA 55 m²



City57
(A,F,G,M)
2 Bedroom
SGA 103.84 m²

DISCLAIMER

While every reasonable care has been taken in preparing these materials and their contents, the developer(s) and its agents cannot be held responsible for any inaccuracies or omissions. All statements are believed to be correct but shall not be regarded as statements or representations of fact. The developer(s) does not accept responsibility for any errors or omissions or for any losses suffered by any person or legal entity resulting from the use of the information contained herein, however caused. All plans, information, specifications, renderings, illustrations, photographs, physical displays, show units, representations and statements are current at the time of publication or fabrication and remain subject to changes by the developer(s) at the discretion of the relevant authorities as may be required. All plans are not drawn to scale unless expressly stated, and are for the purpose of visual presentation of the client's layout that are available. Areas and measurements are estimates only and are subject to change and for a final survey. Renderings and illustrations are artists' impressions only and cannot be regarded as representation of fact. All plans, information, renderings, illustrations, photographs, physical displays, and show units do not necessarily represent as-built specifications.

Marketing Gallery

Jl. Teluk Betung No. 57
Tanah Abang, Kebon Melati
Jakarta Pusat 10230

021-5711-5555

www.57promenade.com