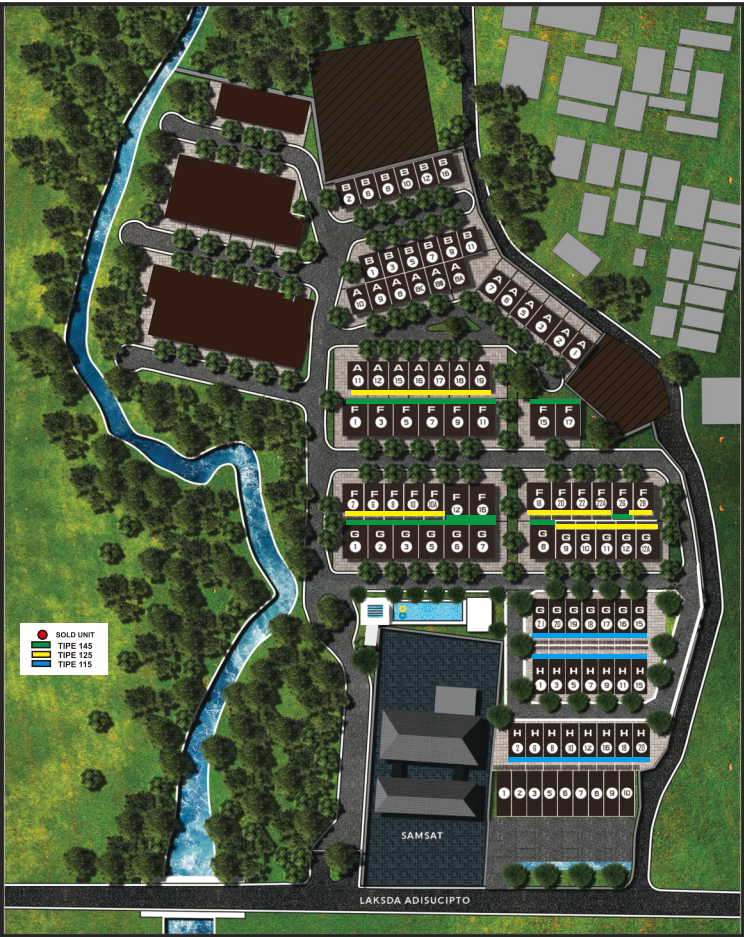




## THE CLUBHOUSE

This 5 starred Clubhouse aims to support the healthy lifestyle and comfort of the residents. It is equipped with adult & kids’ swimming pools, a gym, a praying room and a spacious lounge. This Clubhouse was carefully designed to offer calm and relaxing ambiance. After all, it is meant to be an extension of your own home.



## THE MASTERPLAN

Hyarta Ecovillage is an exclusive premium housing development that aims to provide a good quality of life for its residents. 45% of the land area is dedicated for green environment, enjoy a living close to nature with lush greenary and riverside facilities. The houses at Hyarta Ecovillage are designed with a cross ventilation system that can improve air circulation for healthier life.

### DISCLAIMER

All information, calculations, plans, particulars, images and illustrations contained herein are approximate, not to scale, subject to change and for reference purpose only and shall not constitute or be construed as giving any offer, representation or warranty whether expressly or implied or be relied upon. Whilst every reasonable care has been taken in preparation of this show unit, The Developer, its representatives or agents shall not be held responsible nor accept any liability for any inaccuracies, discrepancies, omissions or incompleteness. Any interested party shall have to seek their own independent professional advice and to satisfy themselves in all respects in relation to any matters contained in this presentation. Reproduction in whole or in part of this presentation without the written permission of the owner is strictly prohibited.

## THE STRATEGIC LOCATION

Close to the city yet away from the bustling city atmosphere, making it the perfect place you can call home.



## TRAVEL DISTANCE

- 3 mins to airport
- 15 mins to Tugu Jogja
- 3-15 mins to hotels (Next to Sheraton, Jayakarta, Aston & Hyatt Regency)
- 10 mins to hypermart (Transmart, Carrefour, Lotte Mart)
- 5-10 mins to universities (Atma Jaya, UPN Veteran Yogyakarta, Gadjah Mada)

## THE DEVELOPER

Hyarta Ecovillage is a strategic development by Jakarta Setiabudi Internasional, Tokyu Land Indonesia and Karyadeka Alam Lestari, envisioned to stand among the top residential developments in Jogja. The record of previous and other current developments have proven their commitment in building a credible reputation. Hyarta Residence, Hyatt Regency Yogyakarta, Grand Hyatt Bali, Andaz Bali, Puri Botanical, Branz, and BSB City Semarang are among the list of successful endeavours that have been developed.

## MARKETING GALLERY

Jl. Laksda Adisucipto KM. 8,5 Sleman, D.I Yogyakarta 55282

# HYARTA ECOVILLAGE





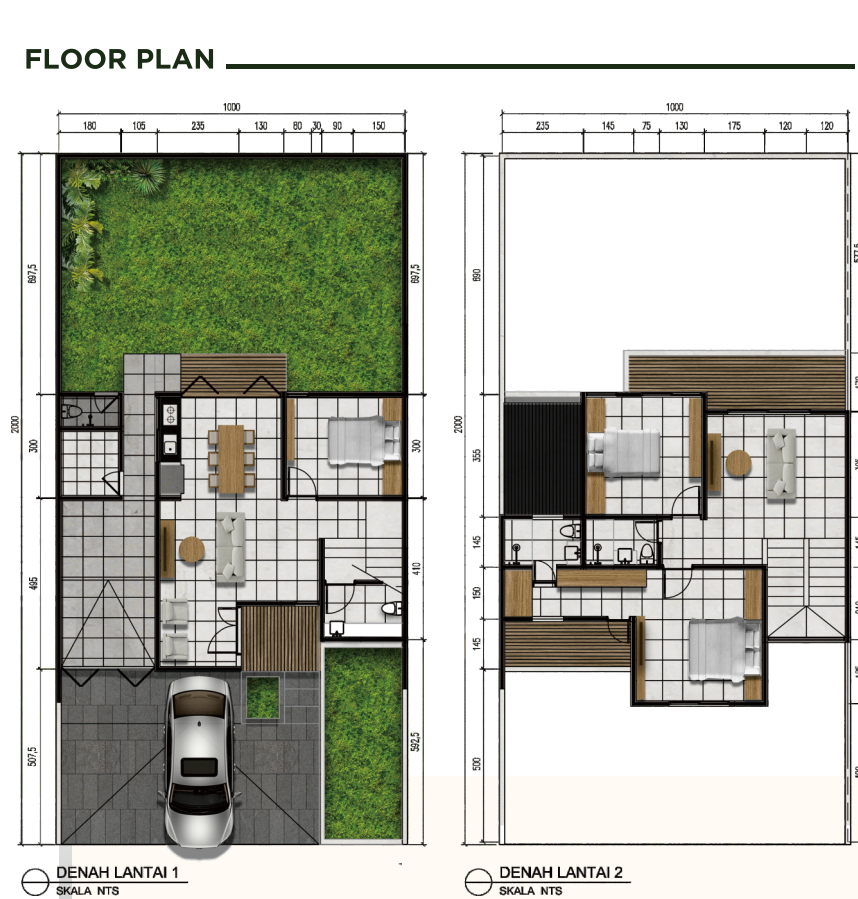
# Townhouse Type 115

HOUSE TYPE

REGULAR

Land Size : 140 SQM

Building Size : 115 SQM





# Townhouse Type 145

HOUSE TYPE

REGULAR

Land Size : 200 SQM

Building Size : 145 SQM



# Townhouse Type 125

HOUSE TYPE

REGULAR

Land Size : 160 SQM

Building Size : 125 SQM

