

PANDANARAN AVENUE

Hunian Mewah Bernuansa Alam



PANDANARAN AVENUE

Hunian Mewah Bernuansa Alam



PANDANARAN AVENUE

Hunian Mewah Bernuansa Alam

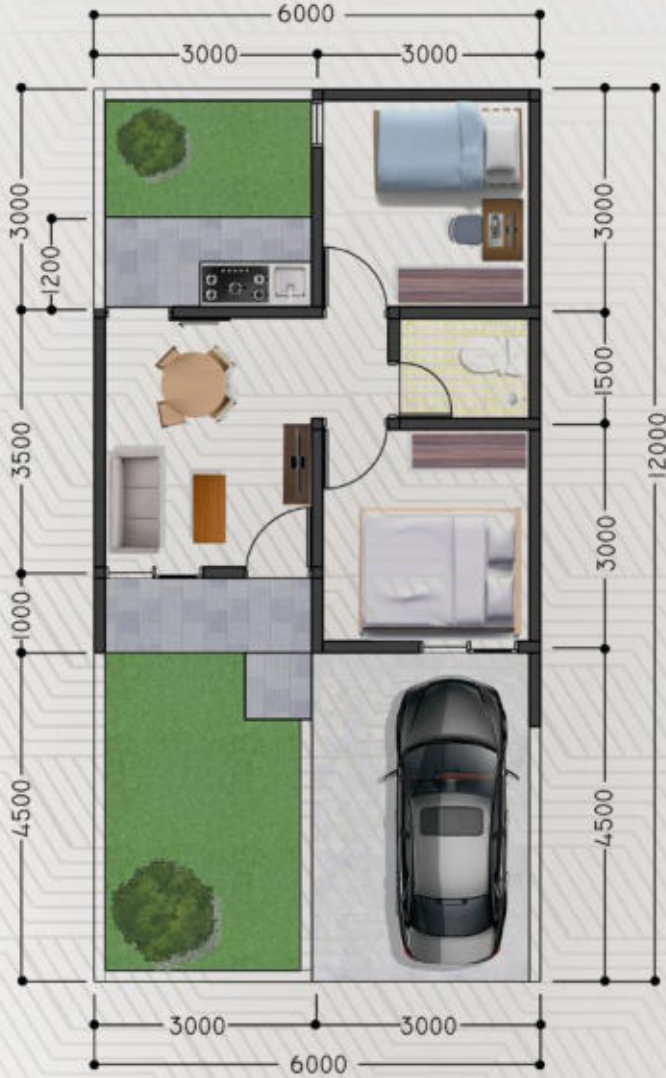


HARGA
800 jt an



*skb

PANDANARAN AVENUE



1 LT
36/72

2

1

1



PANDANARAN AVENUE

Hunian Mewah Bernuansa Alam



HARGA
1M_{an}



*skb

PANDANARAN AVENUE



2 LT
56/72

3

2

2



PANDANARAN AVENUE

Hunian Mewah Bernuansa Alam



HARGA
1,2M_{an}



*skb

PANDANARAN AVENUE



2 LT
65/84

3

2

2



PANDANARAN AVENUE

Hunian Mewah Bernuansa Alam



HARGA
1.6M_{an}



*skb

PANDANARAN AVENUE



DENAH LT. 1

DENAH LT. 2



PANDANARAN AVENUE

Hunian Mewah Bernuansa Alam

SITEPLAN



TERJUAL

15 UNIT

NO	KODE BLOK	LUAS		CASH			KPR		
		LT	LB	1X	12X	24X	1X	12X	24X
1	PA/A-01	128	102	1.853.145.000	1.996.335.000	2.133.052.459	1.876.055.400	2.024.973.000	2.175.457.313
2	PA/A-03	105	100	1.633.434.375	1.750.894.922	1.871.178.563	1.652.228.063	1.774.387.031	1.903.583.227
3	PA/A-05	105	100	1.633.434.375	1.750.894.922	1.871.178.563	1.652.228.063	1.774.387.031	1.903.583.227
4	PA/A-07	105	100	1.633.434.375	1.750.894.922	1.871.178.563	1.652.228.063	1.774.387.031	1.903.583.227
5	PA/A-09	128	102	1.853.145.000	1.996.335.000	2.133.052.459	1.876.055.400	2.024.973.000	2.175.457.313
6	PA/A-02	128	102	1.853.145.000	1.996.335.000	2.133.052.459	1.876.055.400	2.024.973.000	2.175.457.313
7	PA/A-06	105	100	1.633.434.375	1.750.894.922	1.871.178.563	1.652.228.063	1.774.387.031	1.903.583.227
8	PA/A-08	105	100	1.633.434.375	1.750.894.922	1.871.178.563	1.652.228.063	1.774.387.031	1.903.583.227
9	PA/A-10	128	102	1.853.145.000	1.996.335.000	2.133.052.459	1.876.055.400	2.024.973.000	2.175.457.313
10	PA/B-01	119	58	1.511.917.125	1.642.562.391	1.754.459.910	1.532.820.368	1.668.691.444	1.796.908.892
11	PA/B-03	72	56	1.083.027.000	1.162.072.875	1.241.855.231	1.095.674.340	1.177.882.050	1.264.002.701
12	PA/B-05	72	56	1.083.027.000	1.162.072.875	1.241.855.231	1.095.674.340	1.177.882.050	1.264.002.701
13	PA/B-07	72	56	1.083.027.000	1.162.072.875	1.241.855.231	1.095.674.340	1.177.882.050	1.264.002.701
14	PA/B-09	72	56	1.083.027.000	1.162.072.875	1.241.855.231	1.095.674.340	1.177.882.050	1.264.002.701
15	PA/B-11	114	58	1.486.983.750	1.614.512.344	1.724.539.860	1.507.388.325	1.640.018.063	1.765.742.173
16	PA/B-02	118	38	1.295.092.500	1.424.025.938	1.520.312.779	1.315.721.850	1.449.812.625	1.566.345.923
17	PA/B-06	72	36	867.132.000	944.304.750	1.008.539.033	879.479.640	959.739.300	1.034.159.493
18	PA/B-08	72	36	867.132.000	944.304.750	1.008.539.033	879.479.640	959.739.300	1.034.159.493
19	PA/B-10	72	36	867.132.000	944.304.750	1.008.539.033	879.479.640	959.739.300	1.034.159.493
20	PA/B-12	72	36	867.132.000	944.304.750	1.008.539.033	879.479.640	959.739.300	1.034.159.493
21	PA/B-16	120	38	1.312.575.000	1.443.693.750	1.541.291.779	1.333.554.000	1.469.917.500	1.588.199.048
22	PA/C-01	144	67	1.809.300.000	1.970.388.750	2.104.417.408	1.835.074.200	2.002.606.500	2.157.912.409
23	PA/C-03	84	65	1.225.329.000	1.315.363.875	1.405.644.524	1.239.734.580	1.333.370.850	1.431.044.558
24	PA/C-05	84	65	1.225.329.000	1.315.363.875	1.405.644.524	1.239.734.580	1.333.370.850	1.431.044.558
25	PA/C-07	84	65	1.225.329.000	1.315.363.875	1.405.644.524	1.239.734.580	1.333.370.850	1.431.044.558
26	PA/C-09	84	65	1.225.329.000	1.315.363.875	1.405.644.524	1.239.734.580	1.333.370.850	1.431.044.558
27	PA/C-11	84	65	1.225.329.000	1.315.363.875	1.405.644.524	1.239.734.580	1.333.370.850	1.431.044.558
28	PA/C-15	84	65	1.225.329.000	1.315.363.875	1.405.644.524	1.239.734.580	1.333.370.850	1.431.044.558
29	PA/C-17	84	65	1.225.329.000	1.315.363.875	1.405.644.524	1.239.734.580	1.333.370.850	1.431.044.558
30	PA/C-19	137	67	1.718.141.250	1.867.835.156	1.995.026.908	1.742.092.275	1.897.773.938	2.043.963.972
31	PA/C-02	134	67	1.691.917.500	1.838.333.438	1.963.558.408	1.715.344.050	1.867.616.625	2.011.184.284
32	PA/C-06	84	65	1.225.329.000	1.315.363.875	1.405.644.524	1.239.734.580	1.333.370.850	1.431.044.558
33	PA/C-08	84	65	1.225.329.000	1.315.363.875	1.405.644.524	1.239.734.580	1.333.370.850	1.431.044.558
34	PA/C-10	84	65	1.225.329.000	1.315.363.875	1.405.644.524	1.239.734.580	1.333.370.850	1.431.044.558
35	PA/C-12	84	65	1.225.329.000	1.315.363.875	1.405.644.524	1.239.734.580	1.333.370.850	1.431.044.558
36	PA/C-16	84	65	1.225.329.000	1.315.363.875	1.405.644.524	1.239.734.580	1.333.370.850	1.431.044.558
37	PA/C-18	84	65	1.225.329.000	1.315.363.875	1.405.644.524	1.239.734.580	1.333.370.850	1.431.044.558
38	PA/C-20	84	65	1.225.329.000	1.315.363.875	1.405.644.524	1.239.734.580	1.333.370.850	1.431.044.558
39	PA/C-22	142	67	1.750.026.000	1.903.705.500	2.033.288.608	1.774.614.720	1.934.441.400	2.083.819.909
40	PA/D-01	111	58	1.423.172.625	1.542.724.828	1.647.966.510	1.442.300.978	1.566.635.269	1.685.978.267
41	PA/D-03	72	56	1.071.039.000	1.148.586.375	1.227.469.631	1.083.446.580	1.164.095.850	1.249.017.701
42	PA/D-05	72	56	1.071.039.000	1.148.586.375	1.227.469.631	1.083.446.580	1.164.095.850	1.249.017.701
43	PA/D-07	72	56	1.071.039.000	1.148.586.375	1.227.469.631	1.083.446.580	1.164.095.850	1.249.017.701
44	PA/D-09	72	56	1.071.039.000	1.148.586.375	1.227.469.631	1.083.446.580	1.164.095.850	1.249.017.701
45	PA/D-11	72	56	1.071.039.000	1.148.586.375	1.227.469.631	1.083.446.580	1.164.095.850	1.249.017.701
46	PA/D-15	72	56	1.071.039.000	1.148.586.375	1.227.469.631	1.083.446.580	1.164.095.850	1.249.017.701
47	PA/D-17	72	56	1.071.039.000	1.148.586.375	1.227.469.631	1.083.446.580	1.164.095.850	1.249.017.701
48	PA/D-19	72	56	1.071.039.000	1.148.586.375	1.227.469.631	1.083.446.580	1.164.095.850	1.249.017.701
49	PA/D-21	72	56	1.071.039.000	1.148.586.375	1.227.469.631	1.083.446.580	1.164.095.850	1.249.017.701
50	PA/D-23	96	58	1.285.935.000	1.388.332.500	1.483.281.360	1.302.318.600	1.408.812.000	1.514.431.235
51	PA/D-02	101	38	1.125.470.625	1.233.201.328	1.316.766.529	1.142.707.538	1.254.747.469	1.354.318.579
52	PA/D-06	72	36	855.144.000	930.818.250	994.153.433	867.251.880	945.953.100	1.019.174.493
53	PA/D-08	72	36	855.144.000	930.818.250	994.153.433	867.251.880	945.953.100	1.019.174.493
54	PA/D-10	72	36	855.144.000	930.818.250	994.153.433	867.251.880	945.953.100	1.019.174.493
55	PA/D-12	72	36	855.144.000	930.818.250	994.153.433	867.251.880	945.953.100	1.019.174.493
56	PA/D-16	72	36	855.144.000	930.818.250	994.153.433	867.251.880	945.953.100	1.019.174.493
57	PA/D-18	72	36	855.144.000	930.818.250	994.153.433	867.251.880	945.953.100	1.019.174.493
58	PA/D-20	72	36	855.144.000	930.818.250	994.153.433	867.251.880	945.953.100	1.019.174.493
59	PA/D-22	72	36	855.144.000	930.818.250	994.153.433	867.251.880	945.953.100	1.019.174.493
60	PA/D-26	72	36	855.144.000	930.818.250	994.153.433	867.251.880	945.953.100	1.019.174.493
61	PA/D-28	101	38	1.121.266.500	1.228.471.688	1.311.721.579	1.138.419.330	1.249.912.725	1.349.063.423
62	PA/E-01	112	38	1.214.673.000	1.333.554.000	1.423.809.379	1.233.693.960	1.357.330.200	1.465.821.548
63	PA/E-03	99	36	1.082.166.750	1.186.218.844	1.266.580.733	1.098.815.085	1.207.029.263	1.302.952.930
64	PA/E-05	87	36	974.025.000	1.064.559.375	1.136.810.633	988.510.500	1.082.666.250	1.167.775.743
65	PA/E-07	82	36	939.226.500	1.025.411.063	1.095.052.433	953.016.030	1.042.647.975	1.124.277.618
66	PA/E-09	79	36	907.425.000	989.634.375	1.056.890.633	920.578.500	1.006.076.250	1.084.525.743
67	PA/E-11	76	36	888.777.000	968.655.375	1.034.513.033	901.557.540	984.631.050	1.061.215.743
68	PA/E-15	73	36	857.475.000	933.440.625	996.950.633	869.629.500	948.633.750	1.022.088.243
69	PA/E-17	67	36	813.102.750	883.521.844	943.703.933	824.369.805	897.605.663	966.622.930
70	PA/E-19	62	36	765.900.000	830.418.750	887.060.633	776.223.000	843.322.500	907.619.493
71	PA/E-21	68	36	815.850.000	886.612.500	947.000.633	827.172.000	900.765.000	970.056.993
72	PA/E-23	66	36	804.694.500	874.062.563	933.614.033	815.793.390	887.936.175	956.112.618
73	PA/E-25	85	36	957.375.000	1.045.828.125	1.116.830.633	971.527.500	1.063.518.750	1.146.963.243

Pricelist berlaku mulai bulan Oktober 2023

Harga termasuk PPN

Free BPHTB* - Free AJB-HM*

Harga bisa berubah sewaktu2 & menjadi hak penuh dari Pengembang

