

YOUR PREMIUM LIVING

@ **BSBcity**

kedaton
homes

product
brochure



pt kedaton maha prabu

Kedaton Gallery
Kedaton Boulevard No. 1, Kedaton Terrace
BSBcity - Mijen - Semarang 50212

T +6224 8645 6888
www.kedatonhomes.com

where life grows



Kedaton Homes adalah kawasan premium untuk residensial
- **Kedaton Terrace (The Art of Living)** & **Kedaton Park (Cozy Living in the Park)**, untuk hunian khusus - **Kedaton Paviliun (Rumah Kos Konsep Cluster)**, & untuk kawasan komersial - **Kedaton Square (Lifestyle RUKO)** yang dirancang & dibangun dengan **konsep budaya ramah lingkungan** yang asri & teduh.

Kini, Kedaton Homes menjadi semakin lengkap & semarak, dengan berbagai fasilitas baru seperti **Swimming Pool**, **Kopi Prabu (F&B coffeeshop)** & **Prabu Resto** yang telah beroperasi & sudah dapat dinikmati.

Kedaton Homes telah menjadi tempat Anda berlabuh, merejuvenasi diri & bertumbuh, **merajut cerita masa depan** dalam kehangatan kekeluargaan hari ini & esok.

1

lokasi yang
strategis & dinamis

2

bagian integral dari **bsbcity**;
*a place to live, to work
& to play*

3

kedaton terrace
the art of living

4

kedaton park
cozy living in the park

5

selangkah ke
**uptown mall, unika soegijapranata
& town center**

6

kedaton paviliun
rumah kos konsep cluster

7

kedaton homes
where life grows

8

tata kelola
pengelolaan lingkungan
yang berkualitas



kedatonhomes berada di lokasi strategis yang dinamis dengan berbagai kemudahan akses-nya, dan hanya berjarak sekitar **300 meter dari Town Center** (**UpTown Mall, UNIKA Soegijapranata** dan yang lainnya) yang segera hadir di BSBcity.



BSBcity

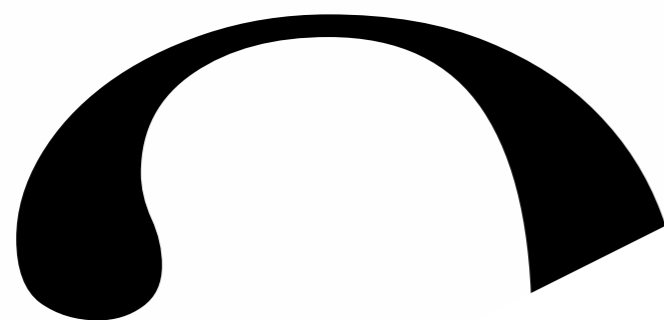
 **kedatonhomes**
 where life grows

 **kedatonterrace**
 the art of living

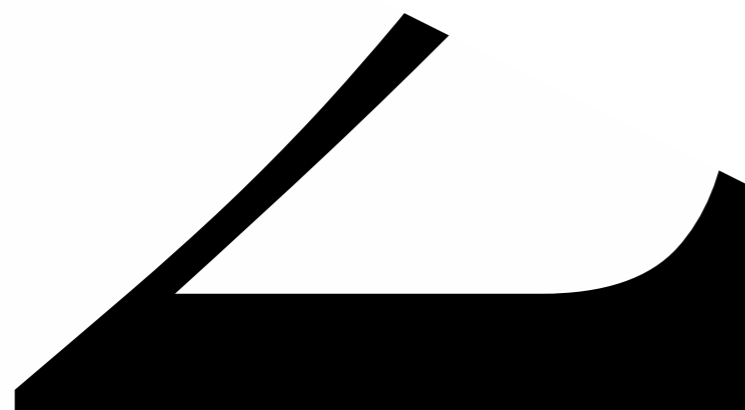
 **kedatonpark**
 cozy living in the park

 **KEDATON PAVILIUN**
 RUMAH KOS KONSEP CLUSTER

 **kedatonsquare**
 ruko@kedatonhomes BSBcity



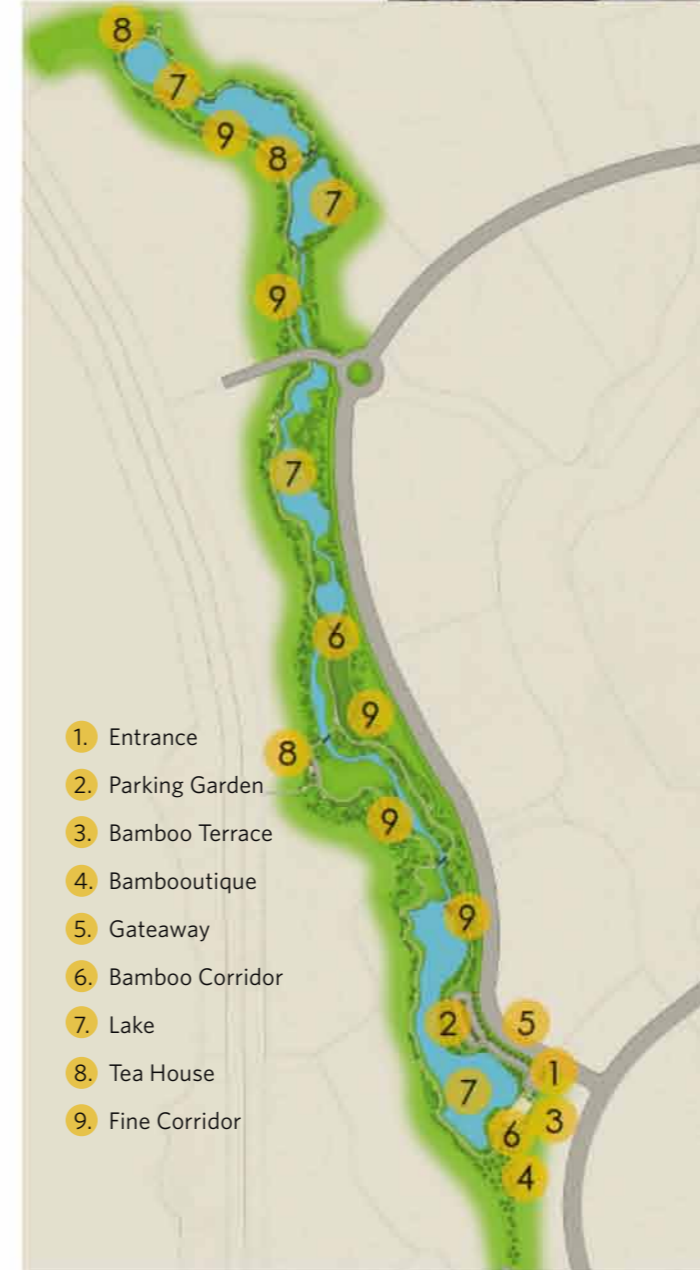
Kedaton Homes berlokasi di **BSBcity**, yang merupakan sebuah pengembangan kota baru seluas **1000 ha. di Semarang** - kawasan **urban development terpadu** terbesar di Jawa Tengah yang direncanakan & dikembangkan secara profesional dengan konsep eco-living. **Aksesibilitas yang semakin baik** dengan beroperasinya **tol Trans Jawa**, serta dipilihnya BSBcity oleh berbagai institusi keuangan, industri, pendidikan & rekreasi telah & akan semakin meramaikan & menjadikan BSBcity kawasan pilihan untuk tinggal, berinvestasi dan beraktivitas yang ideal.





kawasan
urban development modern
dimana pekerjaan, gaya hidup
& kehidupan terkoneksi dalam
dinamika sosial yang bertumbuh





menghadirkan
gaya hidup
aktif & sehat
setiap hari





Lokasi Kawasan Hunian Premium **Kedaton Homes** yang sangat strategis di jantung BSBcity, hanya **10 menit ke Town Center**, dimana terdapat kampus baru **UNIKA Soegijapranata**, **UpTown Mall, Future Commercial Development** - seperti **MICE, Hotel, Apartment, Recreational Center** dan sebagainya. **Selangkah ke Green Walk Park** - sebuah Urban Park yang dilengkapi dengan danau dan berbagai vegetasi, serta fasilitas taman kota yang luas dan asri. Kelebihan ini kini semakin melengkapi Kedaton Homes sebagai kawasan hunian premium dengan **added value** yang senantiasa bertambah.



LEGEND

- A** CAMPUS
- B** CAMPUS TERRACE
- C** STUDENT CONDOMINIUM
- D** HOTEL ***
- E** MULTIFUNCTION & PARKING BUILDING
- F** SHOPPING MALL
- G** THE CENTRUM
- H** SOHO
- I** APARTMENT
- J** HOTEL *****
- K** CONVENTION HALL
- L** MIX USED
- M** CITY TERRACE





WELCOME TO OUR HOME
WHERE LIFE GROWS & FAMILIES CHERRIES

kedaton homes



kedaton park
cozy living in the park



KEDATON PAVILIUN
RUMAH KOS KONSEP CLUSTER



kedatonterrace
the art of living



ruko@
kedatonhomes BSBcity

COMERCIAL AREA





panorama
sambutan hangat
kehadiran anda









THE ART OF LIVING @ kedatonterrace

Kedaton Terrace, yang menempati area seluas **9.6ha.**, menawarkan beragam pilihan **rumah premium** yang menawan. Konsep **arsitektur tropis dengan sentuhan etnik yang estetis & fungsional** bersanding harmonis dengan **alam yang asri & teduh**. Berbagai fasilitas seperti ruang terbuka hijau & club house dengan coffeeshop & pool, security gate, dan lainnya melengkapi suasana nyaman itu, serta tercipta sebuah komunitas sosial yang akrab & dinamis yang membuat kehidupan menjadi lebih hidup & lengkap.





ty. poh cal homes



denaya 70

-  1
-  2
-  1
-  2
-  2
-  2200VA

Disclaimer : While every effort has been made to ensure all dimensions are correct and governmental regulations have been met, the images and floor plans depicted herein are conceptual rendering based on current development plans which are subject to change as may be required and cannot form part of an offer or contract. Any number displayed in this promotional materials and or, if any, other materials, are meant to be an approximate due to the limited proximity of data acquired at the given time. Therefore, as this promotional display shall not and would not form a binding contract, we should not be held liable for displaying numbers in any promotional offering.



Lt. 1

Lt. 2

diraya 85



Disclaimer : While every effort has been made to ensure all dimensions are correct and governmental regulations have been met, the images and floor plans depicted herein are conceptual rendering based on current development plans which are subject to change as may be required and cannot form part of an offer or contract. Any number displayed in this promotional materials and or, if any, other materials, are meant to be an approximate due to the limited proximity of data acquired at the given time. Therefore, as this promotional display shall not and would not form a binding contract, we should not be held liable for displaying numbers in any promotional offering.



Lt. 1

Lt. 2

nindita 96



Disclaimer : While every effort has been made to ensure all dimensions are correct and governmental regulations have been met, the images and floor plans depicted herein are conceptual rendering based on current development plans which are subject to change as may be required and cannot form part of an offer or contract. Any number displayed in this promotional materials and or, if any, other materials, are meant to be an approximate due to the limited proximity of data acquired at the given time. Therefore, as this promotional display shall not and would not form a binding contract, we should not be held liable for displaying numbers in any promotional offering.



andhika 96



Disclaimer : While every effort has been made to ensure all dimensions are correct and governmental regulations have been met, the images and floor plans depicted herein are conceptual rendering based on current development plans which are subject to change as may be required and cannot form part of an offer or contract. Any number displayed in this promotional materials and or, if any, other materials, are meant to be an approximate due to the limited proximity of data acquired at the given time. Therefore, as this promotional display shall not and would not form a binding contract, we should not be held liable for displaying numbers in any promotional offering.



kencana 130



Disclaimer : While every effort has been made to ensure all dimensions are correct and governmental regulations have been met, the images and floor plans depicted herein are conceptual rendering based on current development plans which are subject to change as may be required and cannot form part of an offer or contract. Any number displayed in this promotional materials and or, if any, other materials, are meant to be an approximate due to the limited proximity of data acquired at the given time. Therefore, as this promotional display shall not and would not form a binding contract, we should not be held liable for displaying numbers in any promotional offering.

custom homes

spec is subject to negotiate
/ to be discussed
according to standards



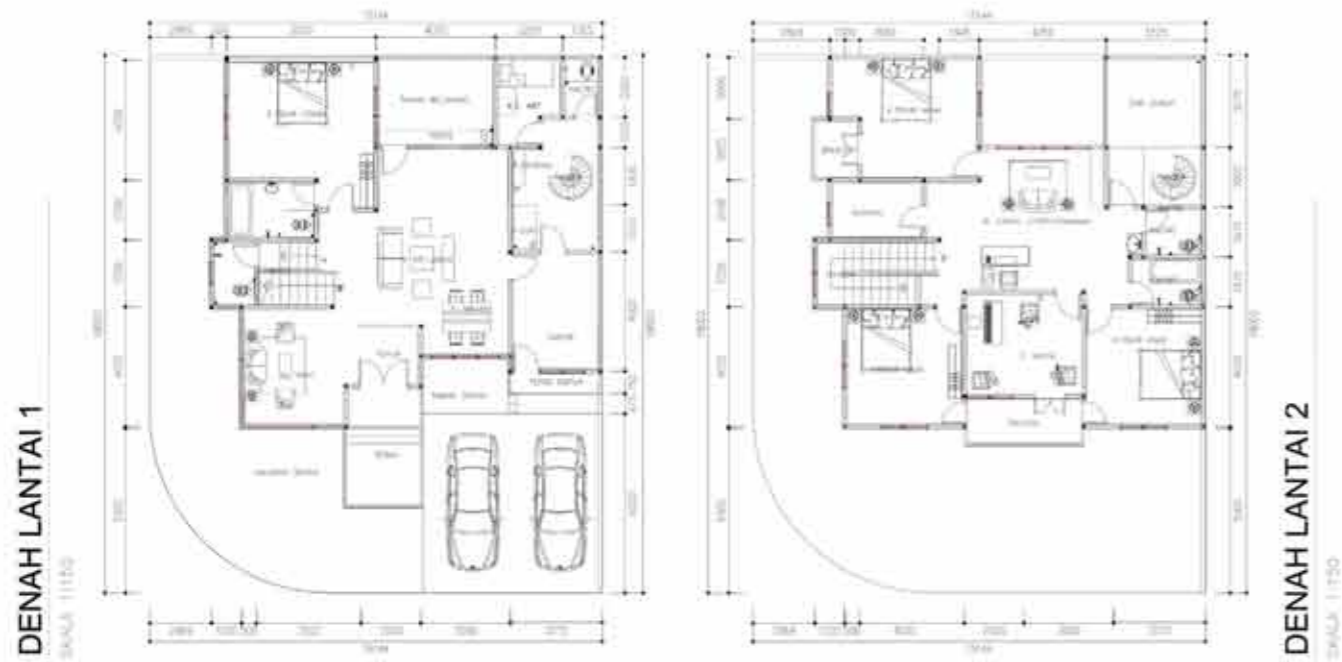
custom-1

- 
 2
- 
 5+2
- 
 3
- 
 6
- 
 5+1
- 
 3500VA

Disclaimer : While every effort has been made to ensure all dimensions are correct and governmental regulations have been met, the images and floor plans depicted herein are conceptual rendering based on current development plans which are subject to change as may be required and cannot form part of an offer or contract. Any number displayed in this promotional materials and or, if any, other materials, are meant to be an approximate due to the limited proximity of data acquired at the given time. Therefore, as this promotional display shall not and would not form a binding contract, we should not be held liable for displaying numbers in any promotional offering.



kedatonterrace
the art of living



custom-2

-  2
-  4+1
-  3
-  2
-  4+1
-  3500VA

Disclaimer : While every effort has been made to ensure all dimensions are correct and governmental regulations have been met, the images and floor plans depicted herein are conceptual rendering based on current development plans which are subject to change as may be required and cannot form part of an offer or contract. Any number displayed in this promotional materials and or, if any, other materials, are meant to be an approximate due to the limited proximity of data acquired at the given time. Therefore, as this promotional display shall not and would not form a binding contract, we should not be held liable for displaying numbers in any promotional offering.



custom-3

-  2
-  5+1
-  2
-  2
-  4+1
-  3500VA

Disclaimer : While every effort has been made to ensure all dimensions are correct and governmental regulations have been met, the images and floor plans depicted herein are conceptual rendering based on current development plans which are subject to change as may be required and cannot form part of an offer or contract. Any number displayed in this promotional materials and or, if any, other materials, are meant to be an approximate due to the limited proximity of data acquired at the given time. Therefore, as this promotional display shall not and would not form a binding contract, we should not be held liable for displaying numbers in any promotional offering.



COZY LIVING IN THE PARK @ kedaton park

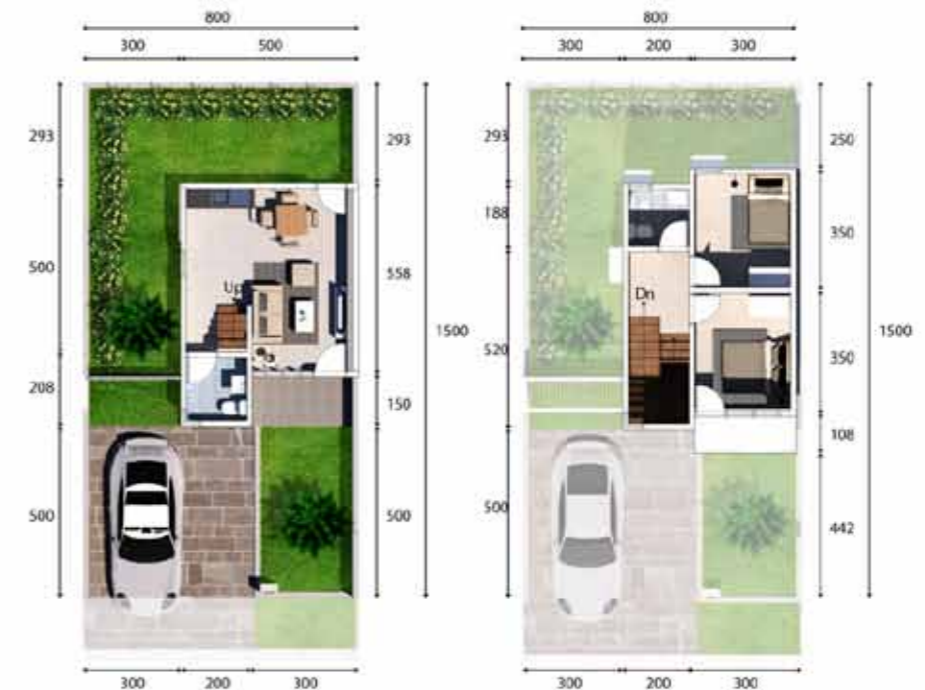
Menempati area seluas **7.1 ha.**, Kedaton Park hadir dengan konsep "**residence in the park**" - **kenyamanan hidup dalam hunian taman asri & teduh** yang menginspirasi, serta dilengkapi dengan adanya "pine park" - taman terbesar di cluster ini, dan berbagai taman di dekat hunian anda. Konsep ini membuka kesempatan bagi anda yang ingin memiliki rumah asri dengan **design estetis, bertumbuh, efektif** dan mampu mengekspresikan diri anda dengan gaya hidup kekinian.



kedaton park
cozy living in the park







danarta 69

- 1
- 3
- 1
- 2
- 2
- 2200VA

dirgamaya 70

- 1
- 2
- 1
- 2
- 2
- 2200VA

Disclaimer : While every effort has been made to ensure all dimensions are correct and governmental regulations have been met, the images and floor plans depicted herein are conceptual rendering based on current development plans which are subject to change as may be required and cannot form part of an offer or contract. Any number displayed in this promotional materials and or, if any, other materials, are meant to be an approximate due to the limited proximity of data acquired at the given time. Therefore, as this promotional display shall not and would not form a binding contract, we should not be held liable for displaying numbers in any promotional offering.

Disclaimer : While every effort has been made to ensure all dimensions are correct and governmental regulations have been met, the images and floor plans depicted herein are conceptual rendering based on current development plans which are subject to change as may be required and cannot form part of an offer or contract. Any number displayed in this promotional materials and or, if any, other materials, are meant to be an approximate due to the limited proximity of data acquired at the given time. Therefore, as this promotional display shall not and would not form a binding contract, we should not be held liable for displaying numbers in any promotional offering.



arkamaya 85

-  1
-  3
-  2
-  2
-  2
-  2200VA

anindya 85

-  1
-  3
-  2
-  2
-  2
-  2200VA

Disclaimer : While every effort has been made to ensure all dimensions are correct and governmental regulations have been met, the images and floor plans depicted herein are conceptual rendering based on current development plans which are subject to change as may be required and cannot form part of an offer or contract. Any number displayed in this promotional materials and or, if any, other materials, are meant to be an approximate due to the limited proximity of data acquired at the given time. Therefore, as this promotional display shall not and would not form a binding contract, we should not be held liable for displaying numbers in any promotional offering.

Disclaimer : While every effort has been made to ensure all dimensions are correct and governmental regulations have been met, the images and floor plans depicted herein are conceptual rendering based on current development plans which are subject to change as may be required and cannot form part of an offer or contract. Any number displayed in this promotional materials and or, if any, other materials, are meant to be an approximate due to the limited proximity of data acquired at the given time. Therefore, as this promotional display shall not and would not form a binding contract, we should not be held liable for displaying numbers in any promotional offering.



anindha 96

-  1
-  3
-  2
-  2
-  2
-  2200VA

Disclaimer : While every effort has been made to ensure all dimensions are correct and governmental regulations have been met, the images and floor plans depicted herein are conceptual rendering based on current development plans which are subject to change as may be required and cannot form part of an offer or contract. Any number displayed in this promotional materials and or, if any, other materials, are meant to be an approximate due to the limited proximity of data acquired at the given time. Therefore, as this promotional display shall not and would not form a binding contract, we should not be held liable for displaying numbers in any promotional offering.



kalinda 96

-  1
-  3
-  2
-  2
-  2
-  2200VA

Disclaimer : While every effort has been made to ensure all dimensions are correct and governmental regulations have been met, the images and floor plans depicted herein are conceptual rendering based on current development plans which are subject to change as may be required and cannot form part of an offer or contract. Any number displayed in this promotional materials and or, if any, other materials, are meant to be an approximate due to the limited proximity of data acquired at the given time. Therefore, as this promotional display shall not and would not form a binding contract, we should not be held liable for displaying numbers in any promotional offering.



danishwara 139

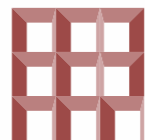
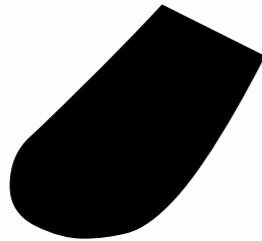
-  1
-  4
-  4
-  2
-  3
-  2200VA

Disclaimer: While every effort has been made to ensure all dimensions are correct and governmental regulations have been met, the images and floor plans depicted herein are conceptual rendering based on current development plans which are subject to change as may be required and cannot form part of an offer or contract. Any number displayed in this promotional materials and or, if any, other materials, are meant to be an approximate due to the limited proximity of data acquired at the given time. Therefore, as this promotional display shall not and would not form a binding contract, we should not be held liable for displaying numbers in any promotional offering.



RUMAH KOS KONSEP CLUSTER @ KEDATON PAVILIUN

Kedaton Paviliun memiliki konsep arsitektur-interior-lansekap yang estetis dan fungsional yang menggairahkan interaksi komunitas. Konsep "Bringing The Outside In" - membawa ranah alam ke dalam, menciptakan suasana kebetahan di tempat tinggal yang dikembangkan sebagai hunian komunal multi-fungsi bagi semua (study-work-play-collaborate) dan menjadi cluster tersendiri yang memiliki one gated system dan sistem keamanan 24 jam. Kedaton Paviliun hanya selangkah ke berbagai fasilitas dalam kawasan Kedaton Homes : swimming pool, Kopi Prabu coffeeshop, lounge & gallery; serta dekat ke berbagai fasilitas yang dikembangkan di BSBcity : Green Walk (park and lake), kampus baru UNIKA Soegijapranata & UpTown Mall. Dengan demikian, Kedaton Paviliun menjadi pilihan hunian yang menghadirkan keunggulan dan diferensiasi yang kuat.

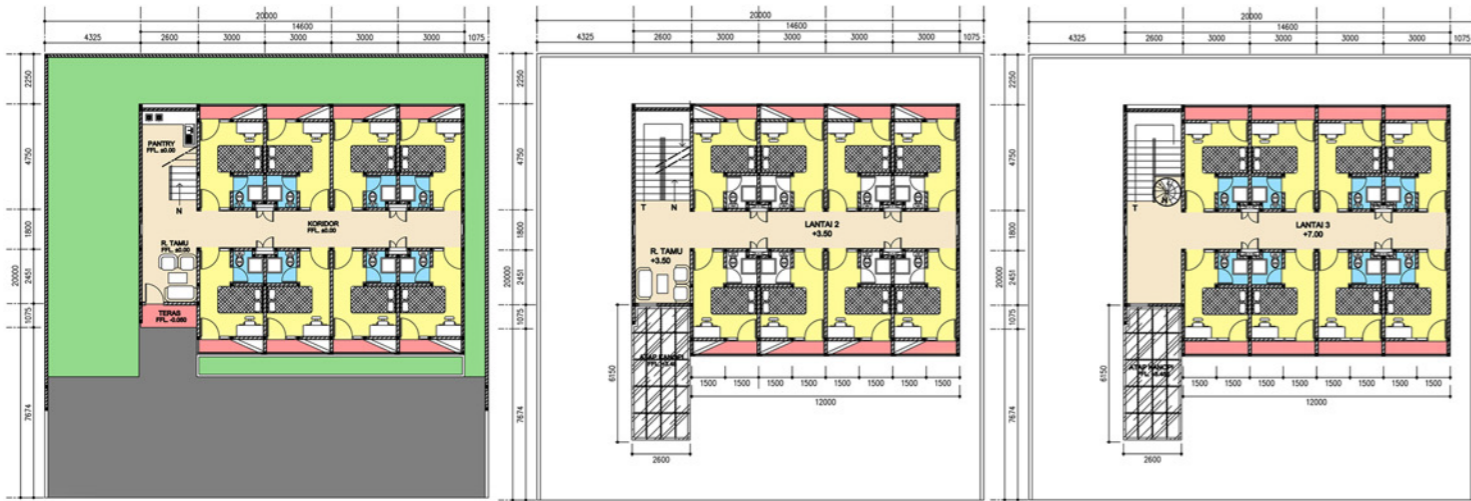


KEDATON PAVILIUN
RUMAH KOS KONSEP CLUSTER









DENAH LANTAI DASAR

DENAH LANTAI 1

DENAH LANTAI 2

paviliun 400

- + 24
- 1
- 3
- 6
- 16.600VA

Disclaimer : While every effort has been made to ensure all dimensions are correct and governmental regulations have been met, the images and floor plans depicted herein are conceptual rendering based on current development plans which are subject to change as may be required and cannot form part of an offer or contract. Any number displayed in this promotional materials and or, if any, other materials, are meant to be an approximate due to the limited proximity of data acquired at the given time. Therefore, as this promotional display shall not and would not form a binding contract, we should not be held liable for displaying numbers in any promotional offering.



DENAH LANTAI DASAR

DENAH LANTAI 1

DENAH LANTAI 2

paviliun 280

- + 15
- 1
- 2
- 5
- 11.200VA

Disclaimer : While every effort has been made to ensure all dimensions are correct and governmental regulations have been met, the images and floor plans depicted herein are conceptual rendering based on current development plans which are subject to change as may be required and cannot form part of an offer or contract. Any number displayed in this promotional materials and or, if any, other materials, are meant to be an approximate due to the limited proximity of data acquired at the given time. Therefore, as this promotional display shall not and would not form a binding contract, we should not be held liable for displaying numbers in any promotional offering.



paviliun 220

-  12
-  1
-  2
-  4
-  9.400VA

Disclaimer : While every effort has been made to ensure all dimensions are correct and governmental regulations have been met, the images and floor plans depicted herein are conceptual rendering based on current development plans which are subject to change as may be required and cannot form part of an offer or contract. Any number displayed in this promotional materials and or, if any, other materials, are meant to be an approximate due to the limited proximity of data acquired at the given time. Therefore, as this promotional display shall not and would not form a binding contract, we should not be held liable for displaying numbers in any promotional offering.





TATA KELOLA ESTATE YANG PROFESIONAL

Pengelolaan lingkungan berkualitas yang dilakukan oleh profesional sebagai bukti komitmen developer untuk menjaga estetika lingkungan tetap indah seperti kala pertama Anda & Keluarga melihatnya & menjatuhkan pilihan Anda pada pandangan pertama. Tata kelola ini juga mencakup pelayanan administrasi & manajemen aktivitas keikutsertaan warga dalam program komunitas yang memberikan nilai tambah peran warga dalam komunitas hunian premium ini. Beberapa diantaranya seperti **Pemeliharaan Lingkungan, Landscape & Halaman rumah, Pengelolaan Sampah, Pelayanan Pelanggan dan Hubungan Warga, Aktivitas Komunitas Administrasi & Billing yang handal, Mengikutsertakan Konsumen & Warga dalam Kedaton Referral Program.**





The Making Of
YOUR
BEAUTIFUL
LIVING
IN STYLE