



T
SOUTH
TRESOR

A *TREASURE* ———
——— IN *SERENITY*

Encircled *by* Sophistication

Introducing a new collection of residential townhomes in the tranquil South of Metland Cyber Puri area. Inspired by the timeless wisdom that **'home is a treasure chest of living'** Tresor transcends mere residency. It offers you the key to unlock the true sense of **serenity, luxury, and belonging** that extends far beyond your doorstep.



Strategic Location



Getting to South Tresor



Future MRT Station
Jakarta - Tangerang



30 Minutes
to Soekarno-Hatta
Airport



2 Minutes
to Jakarta Outer
Ring Road



2 Minutes
to International
Hospital



10 Minutes
to CBD West
Jakarta



Welcome To

S
SOUTH
TRESOR



Encircled by
Sophistication



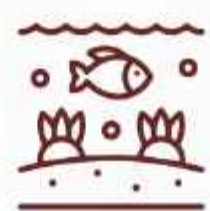


Luxurious Facilities

Introducing a new collection of residential townhomes in the tranquil South of Metland Cyber Puri area. Inspired by the timeless wisdom that "home is a treasure chest of living," Tresor transcends mere residency. It offers you the key to unlock the true sense of **serenity, luxury, and belonging** that extends far beyond your doorstep.



Garden Path



Aqua Garden



Children Playground



Jogging Track



Gazebo



3 on 3 Basketball

Type
C 9 x 17 *Double Facade*

Land Area : 222 m²
 Building Area : 153 m²



1st Floor Plan



2nd Floor Plan

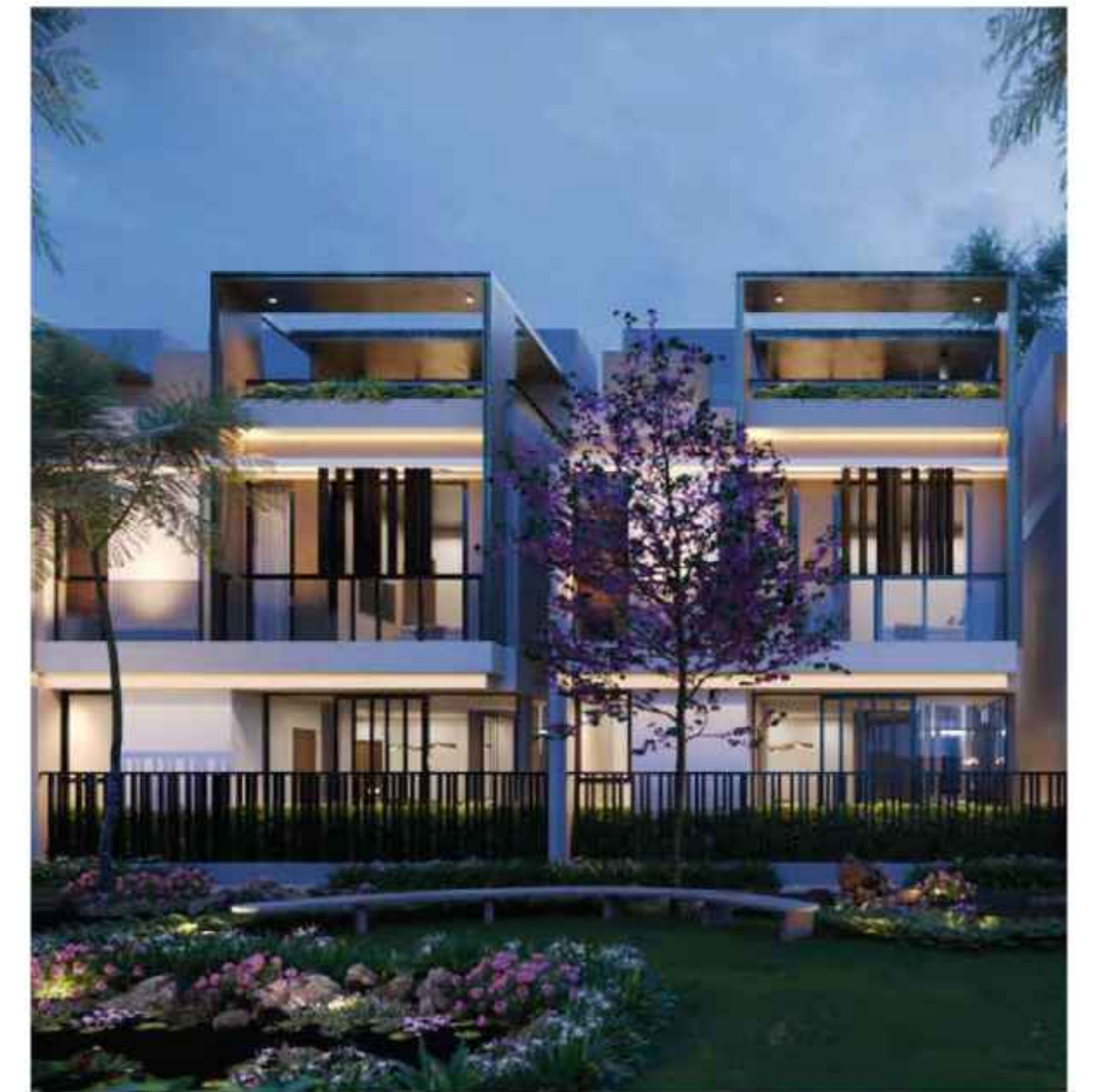


3rd Floor Plan

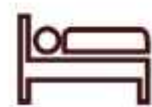


Front Facade

Rear Facade



2 Carpark



4+1 Bedroom



1 Lift



4 Bathroom

Type

C 9 x 17 *Badan*

Land Area : 222 m²

Building Area : 153 m²



1st Floor Plan



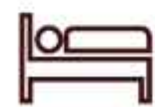
2nd Floor Plan



3rd Floor Plan



2 Carpark



4+1 Bedroom



4 Bathroom

Disclaimer :
adipiscing elit, sed diam nonumy nibh euismod tincidunt ut laoreet dolore magn nibh euismod tincidunt.



Type
B 8 x 15

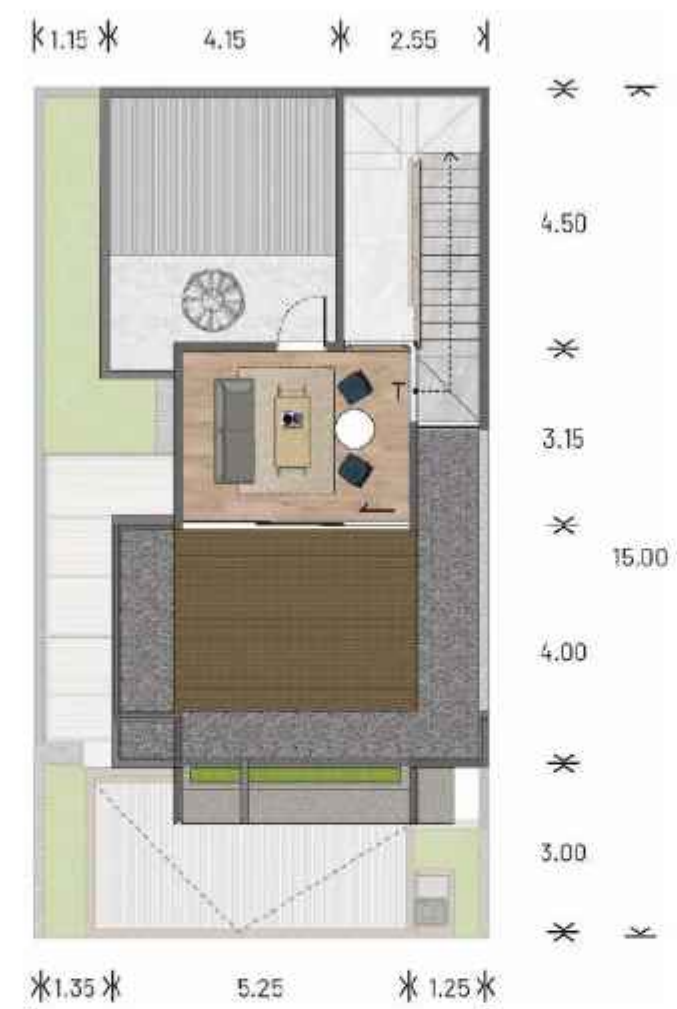
Land Area : 167 m
Building Area : 120 m



1st Floor Plan



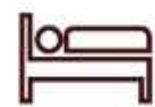
2nd Floor Plan



3rd Floor Plan



2 Carpark



3+1 Bedroom



3 Bathroom

Disclaimer :
adipiscing elit, sed diam nonummy nibh euismod tincidunt ut laoreet dolore magn nibh euismod tincidunt.



Type
A 7 x 15

Land Area : 156 m
Building Area : 105 m



1st Floor Plan



2nd Floor Plan



3rd Floor Plan



2 Carpark



3+1 Bedroom



3 Bathroom

Disclaimer :
adipiscing elit, sed diam nonummy nibh euismod tincidunt ut laoreet dolore magn nibh euismod tincidunt.





Clubhouse & Gymnasium

“
a place where the comforts of healthy living
and luxury meet in perfect harmony
”



Swimming Pool

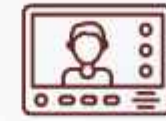
“
Be part of a prestigious community
and enjoy a higher quality of life.
”



Premium Features



Home Lift



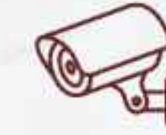
Smart Control Panel



Smart Door Lock



EV Charging*



Smart CCTV



Motion Detector



Smart Switch



Door Sensor



Security Alarm

Specifications

FOUNDATION

- Mini Pile

MAIN STRUCTURE

- Reinforced Concrete

WALL

- Red Brick

INTERIOR WALL FINISHES

- General wall: Plaster & paint
- Bathroom: Homogenous Tiles
- Washable Interior Paint

EXTERIOR WALL FINISHES

- Plaster & Paint
- Marble Accent Wall / Equivalent
- Composite Wood

CEILING

- Gypsum Board In Paint Finish

ROOF

- Asphalt Bitumen Roof
- Lightweight Steel Frame
- Alderon Canopy
- Main Entrance Door: Solid Engineering Wood
- With Smart Door Lock
- Interior Door: Engineering Wood
- Sliding Door: Aluminium Glass With Multiple Lock
- Sound Insulation, Water Tight

FITTING

- Kohler & Grohe

WINDOW

- Aluminium Glass With Multiple Lock
- Sound Insulation Aluminium Door Window
- Water Tight
- Air Circulation & Optimal Lighting With Multiple Opening

FLOOR FINISHES

- Carport : Andesite
- Terrace: Composite Wood
- General Floor: QUADRA / Equivalent
- Bedroom : Laminated Flooring
- Bathroom : Homogenous Tiles

SANITARY WARES

- Kohler & Grohe

SMART HOME SYSTEM

- Videophone With Multifunction System
- Wi-Fi Connection With Mobile App

LIFT

- Capacity For 3-4 Person Type C Double Facade

ELECTRICITY

- 5500-7700 VA
- EV Connection Outlet

WATER SUPPLY

- PDAM
- Roof tank & Booster Pump

“ We sincerely appreciate your time and attention in exploring luxury tropical-designed **South Tresor**. We believe that this property is not just a residence, but also an investment that offers comfort, luxury, and harmony with the surrounding nature. With modern features and a strategic location, this home is designed to meet all the needs of you and your family”.

Thankyou

www.metlandcyberpuri.com

Marketing Gallery :

Jl. Metland Boulevard
Cipondoh, Tangerang,
Banten, 15159

Developed by :

Metland
CYBER PURI

DISCLAIMER

Neither the Developer nor its agents will be held responsible for any inaccuracies or omissions in the information contained in this brochure. The Developer does not accept responsibility for any errors or omissions or for any losses suffered by any person or legal entity resulting from the use of the information contained in this brochure, howsoever caused. The statements, visual representations, models, show units, displays and illustrations, photographs, art renderings and other graphic representations and references are intended to portray only artistic impressions of the development and décor and cannot be regarded as accurate or representations of fact. All areas and other measurements are approximate measurements and are subject to change and final survey. All plans and models are not to scale unless expressly stated and are subject to amendment. All information, specifications, renderings, visual representations, measurements and plans are subject to change as may be required by us and/or the relevant authorities. The Sale and Purchase Agreement (SPA, also known as a PPJB) shall form the entire agreement between the Developer and the Purchaser and shall supersede all statements, representations or promises made prior to the signing of the SPA and shall in no way be modified by any statements, representations or promises made by us or our agents which are not embodied in the SPA, whether before or after the signing of the SPA. Any explanation concerning the SPA and the development is for information purposes only and it is recommended that potential Purchasers seek independent legal advice with regard to the proposed purchase.