



DOLCE VISTA

The Jewel of Bekasi

PAKUWON
RESIDENCES
—BEKASI—

PAKUWON CITY
—BEKASI—

DOLCE VISTA

FOUR POINTS
BY SHERATON

Fairfield
BY HARRIOTT

a unique blend of
**Style, Luxury
& Comfort**

Kenapa harus beli DOLCE VISTA

- Lokasi di atas Premium Mall Bekasi
- Premium Facility
- Akses mudah (400 m LRT Bekasi Barat) & 300 m Pintu Tol Bekasi Barat
- Konsep one stop livings
- Limited & Efisien unit
- Car park 1:1
- Private Lift



- **400 M** LRT to Jakarta
- **10 menit** Sekolah nasional & International
- **10 menit** Rumah Sakit
- **3 KM** Commuter line
- **300 M** Toll Gate Jakarta & Tol Cikampek

The Pinnacle of LUXURIOUS Living

a total tranquil atmosphere combines
luxury and comfort



DOLCE VISTA

The Jewel of Bekasi



Luxury Beyond Compromise

Every effort is made to enhance your stay in comfort & style



PRIVATE LOUNGE



LOBBY



DROP OFF LOBBY



1,6 Ha *of sport facilities for your family to enjoy*

- ✓ Luxurious Lobby Lounge
- ✓ Jogging Track
- ✓ Gym & Sauna
- ✓ Access to Mall
- ✓ Function Room
- ✓ Library
- ✓ Swimming and Jacuzzi Pool
- ✓ Infinity & leisure Pool
- ✓ Children's Pool & Children's Play Ground



Dive Above The Sky

All the beautiful fantasies of a comfortable life



Where Luxury Meets Convenience

Coming home to a resort paradise yet without compromising
the convenience of one stop living

SKY GARDEN



PAKUWON MALL BEKASI

Dolce Vita is directly connected to Pakuwon Mall Bekasi, making it only one step away for your various daily needs. We welcome F&B, fashion, and other entertainment. **AEON** Supermarket has joined and is the largest retailer in Japan and the first Japanese supermarket in the city of Bekasi.

*Making Your Stay
the Most
Pleasurable Experience*

DOLCE VISTA

FOUR POINTS
BY SHERATON

Fairfield
BY MARRIOTT



Selamat Bergabung

OPENING SOON

AEON STORE
di **PAKUWON MALL BEKASI**



17 Maret 2023

ANCHOR TENANT PAKUWON MALL BEKASI

- ★ PT. AEON INDONESIA
- ★ MAP GROUP
- ★ BOGA GROUP
- ★ HIRO GROUP
- ★ UNIQLO
- ★ ERAJAYA GROUP
- ★ XXI
- ★ CHAMP GROUP
- ★ AMAZON GROUP
- ★ TOBY'S ESTATE

Managed by **Marriott International Hotel**



SITE PLAN



1,6 Ha of sport facilities for your family to enjoy

GENERAL FACILITIES

- 1. Gym
- 2. BBQ
- 3. Lobby Lounge indoor & outdoor

- 4. Infinity Pool
- 5. Lagoon Pool
- 6. Plaza

- 7. Water Play Pool
- 8. Function Room
- 9. BBQ

- 10. Kids Pool

KEY PLAN



LT. 1



LT. 12



LT. 2



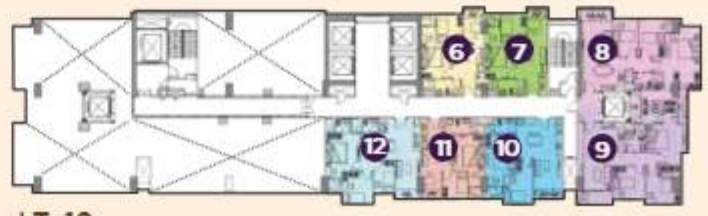
LT. 15



LT. 3, 5, 6, 7, 8, 9, 10, 11, 16, 17, 20, 21, 22,
23, 25, 26, 27, 28, 29, 30



LT. 18



LT. 19

FLOORPLAN - 1 BR



FLOORPLAN - 2 BR



TYPE 1 BU

SEMI GROSS AREA : 28 M²
NETT AREA : 22.5 M²



Lt. 1



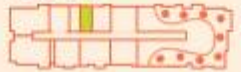
Lt. 2



Lt. 3, 5, 6, 7, 8, 9, 10, 11, 16, 17, 18, 20,
21, 22, 23, 25, 26, 27, 28, 29, 30



Lt. 12 REFUCE



Lt. 15 REFUCE



TYPE 2 BS

SEMI GROSS AREA : 57 M²
NETT AREA : 46 M²



Lt. 1



Lt. 2



Lt. 3, 5, 6, 7, 8, 9, 10, 11, 16, 17, 18, 20,
21, 22, 23, 25, 26, 27, 28, 29, 30, 31



Lt. 15 REFUCE



Lt. 19 REFUCE



FLOORPLAN - 3 BR



WITH PRIVATE LIFT UNIT

TYPE 3 BB

SEMI CROSS AREA : 111 M2
NETT AREA : 90 M2



Lt. 3, 5, 6, 7, 8, 9, 10, 11, 16, 17, 20, 21, 22,
23, 25, 26, 27, 28, 29, 30, 31



Lt. 12 REFUGE



Lt. 15 REFUGE



SPESIFIKASI MATERIAL

LANTAI

Ruang Tamu & Ruang Makan	: Homogeneous Tile 80x80cm
Kamar Tidur	: Homogeneous Tile 80x80cm
Dapur	: Homogeneous Tile 80x80cm
Kamar Mandi	: Ceramic Tile
Balkon	: Ceramic Tile

DINDING

Eksternal	: Dinding precast diplester & dicat
Pembatas antar unit	: Bata ringan lapis gipsumboard & dicat
Ruang Keluarga & Kamar tidur	: partisi gipsumboard & dicat
Dapur	: Bata ringan diplester & dicat
Kamar Mandi	: Bata ringan dilapis keramik

PLAFOND

Ruang Keluarga & kamar tidur	: Concrete expose + skimcoat & dicat
Kamar Mandi	: Gipsumboard dicat
Dapur	: Gipsumboard dicat
Balkon	: Concrete expose + skimcoat & dicat

PINTU

Pintu masuk utama	: Kusen & pintu kayu + architrave finish cat
Pintu Kamar Tidur	: Kusen & pintu kayu + architrave finish cat
Pintu Kamar Mandi	: Kusen & pintu kayu + architrave finish cat
Pintu Balkon	: Kusen aluminium

KAMAR MANDI

Pintu Kamar Mandi : Kloset duduk + wastafel + shower ex TOTO / setara

JENDELA

Pembatas dengan ruang luar : Kaca Tinted dengan kusen aluminium

JARINGAN INSTALASI

1. Listrik tiap Unit : Listrik dengan KWH meter untuk setiap unit

- Type 1 BR : 2200 VA
- Type 2 BR : 3200 VA
- Type 3 BR : 4400 VA

2. Air bersih dan air kotor

3. Jaringan Instalasi Air Conditioner & pipa drain AC

4. Jaringan TV dengan 1 outline

5. Jaringan Fire Alarm, Hydrant System, Springkler & Heat Detector

6. AC terpasang disetiap ruang tamu & kamar tidur

7. Waterheater

8. Car park 1:1 unreserved (2-3 BR)

SMART DOOR LOCKS

5 in 1 feature (wifi version) :

- Pin Code
- Smart Card
- Emergency Key
- Fingerprint
- Smart Home Module



LAIN-LAIN

1. Sistem keamanan :
 - a. Kamera CCTV
 - b. Access card untuk Lift
2. Emergency Evacuation Paging System (EVAC-Speaker)

Marketing Gallery

Lobby Office 88 @ Mall Kota Kasablanka,
Jl. Casablanca Raya Kav. 88 Jakarta Selatan 12870

Jl. Pekayon Raya, RT 01/002
Bekasi Selatan 17530, Jawa barat
Open Monday - Sunday : 10 am - 9 pm

PAKUWON
RESIDENCES
—BEKASI—



PAKUWON GROUP