



PONDOK INDAH

Sales Gallery Pondok Indah
North Skywalk 1st floor
Pondok Indah Mall

www.pondokindahgroup.co.id

AMALA

PONDOK INDAH RESIDENCES





Future Development

Pondok Indah Office Tower



Tower at PIM 3

Intercontinental Hotel

PIM 1

PIM 2

Pondok Indah Padang Golf

Pondok Indah Driving Range

Pondok Indah Golf Apartments

Pondok Indah Waterpark

Street Gallery

Pondok Indah Citiwalk

PIM 3

Pondok Indah Residences

An Iconic Transformation
of Pondok Indah City Center.



Pondok Indah Mall 1

A Dynamic and Vibrant Lifestyle in The Heart of Pondok Indah



Pondok Indah Water Park



Improve your game at Pondok Indah Padang Golf Indonesia's first International standard golf course



Pondok Indah Mall 2



Indulge yourself in Pondok Indah Mall 1 & 2 fine selection in branded shops



Pondok Indah Office Tower



Double Private Lift



Gym



Tennis

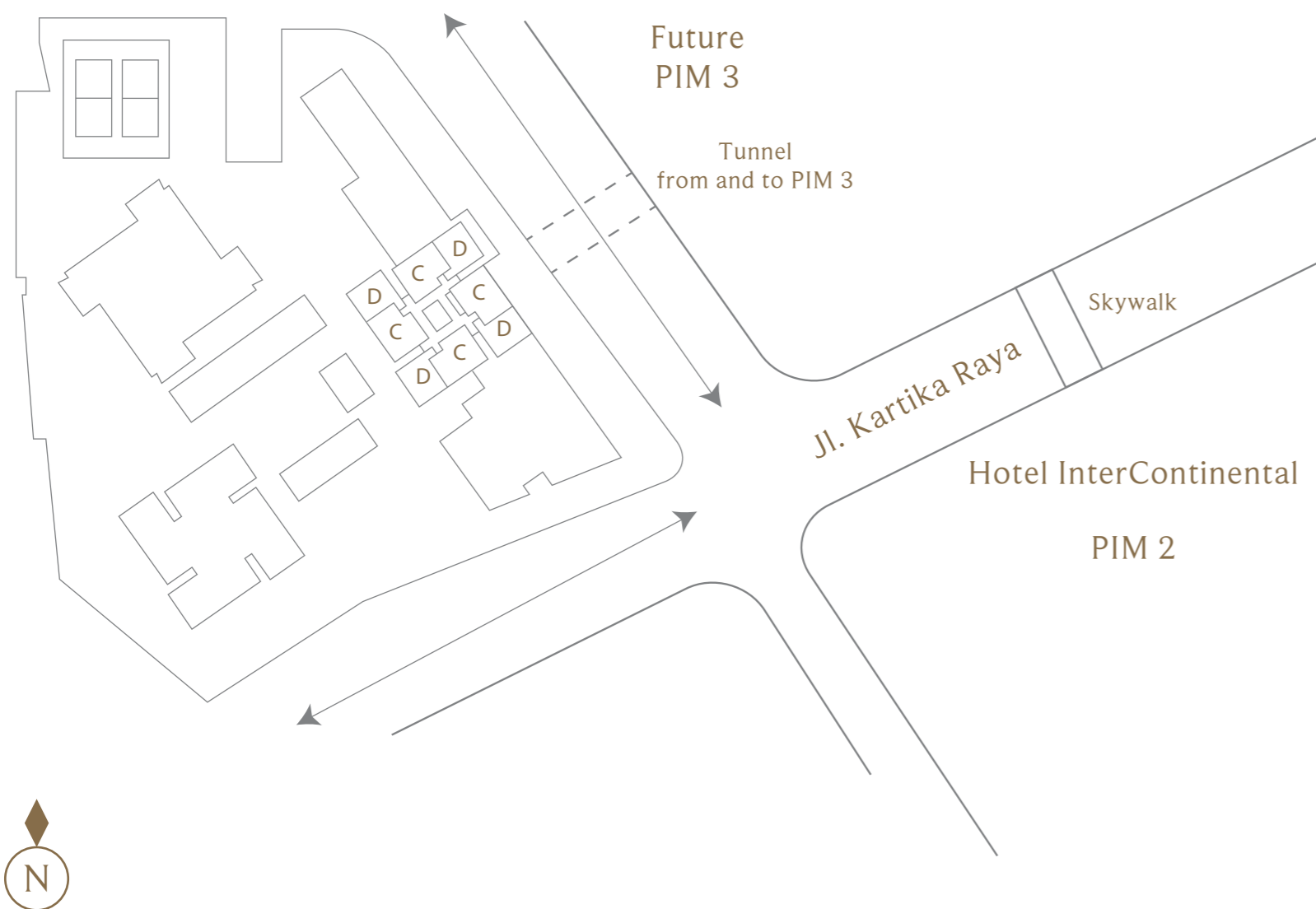


Amala Residence features generous outdoor facilities for all family member, including a 50m long outdoor lap pool, covered pool, art garden, private sun-deck, children's pool and children's playground. Residents can enjoy panoramic view of the sky while relaxing by the pool side.

Location & Unit Type

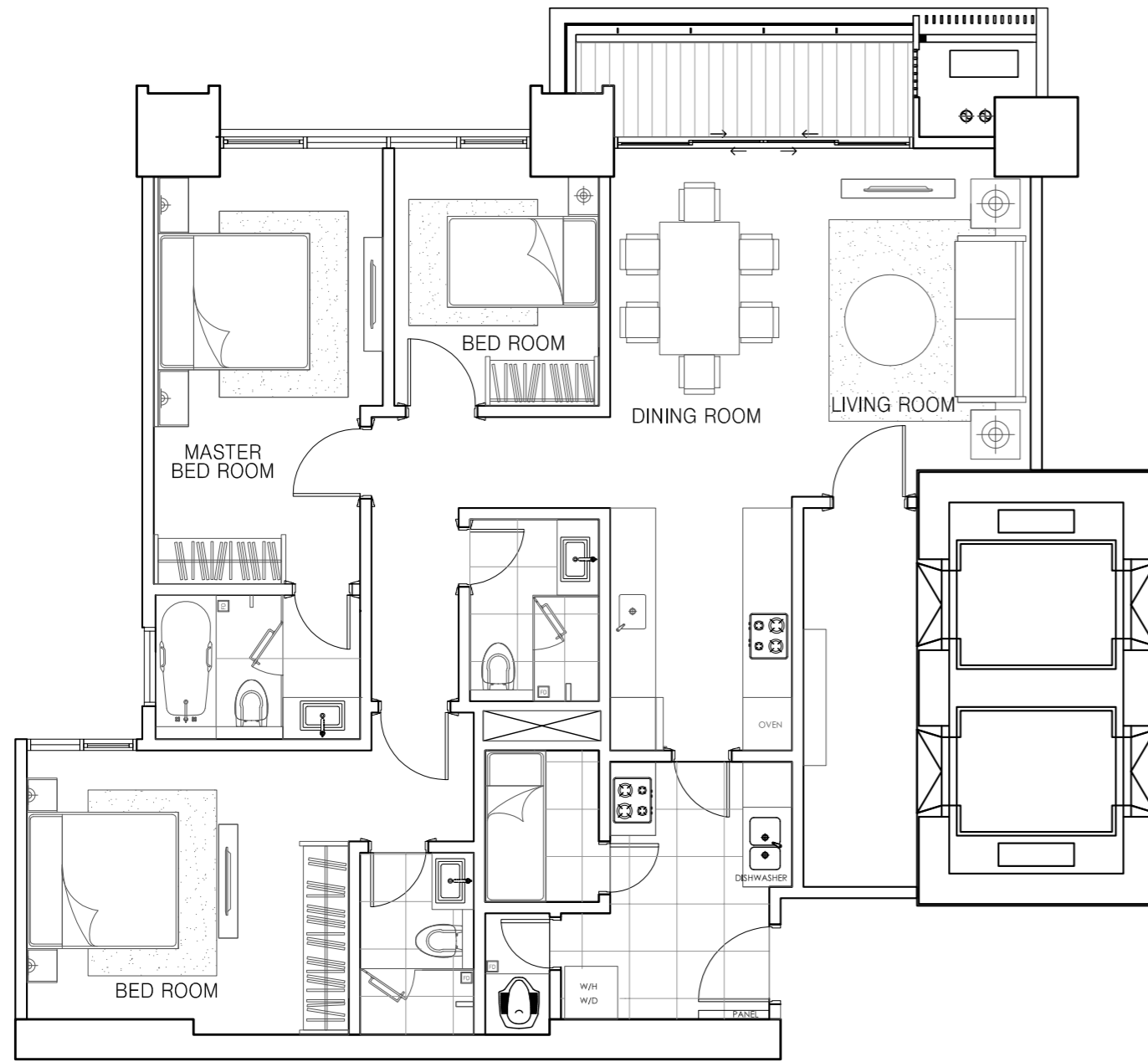
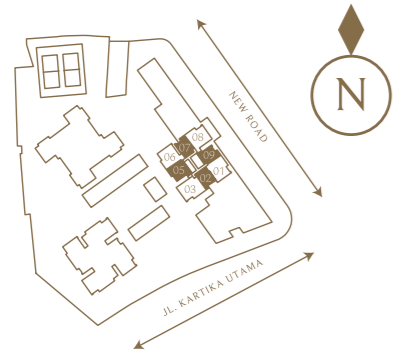
Legend

- | | |
|------------------|-----------------------|
| A. Amala Tower | 1. Entrance |
| B. Kartika Tower | 2. Drop off |
| C. Maya Tower | 3. Main Swimming Pool |
| | 4. Kid's Pool |
| | 5. Indoor Pool |
| | 6. Tennis Court |
| | 7. Fitness Center |



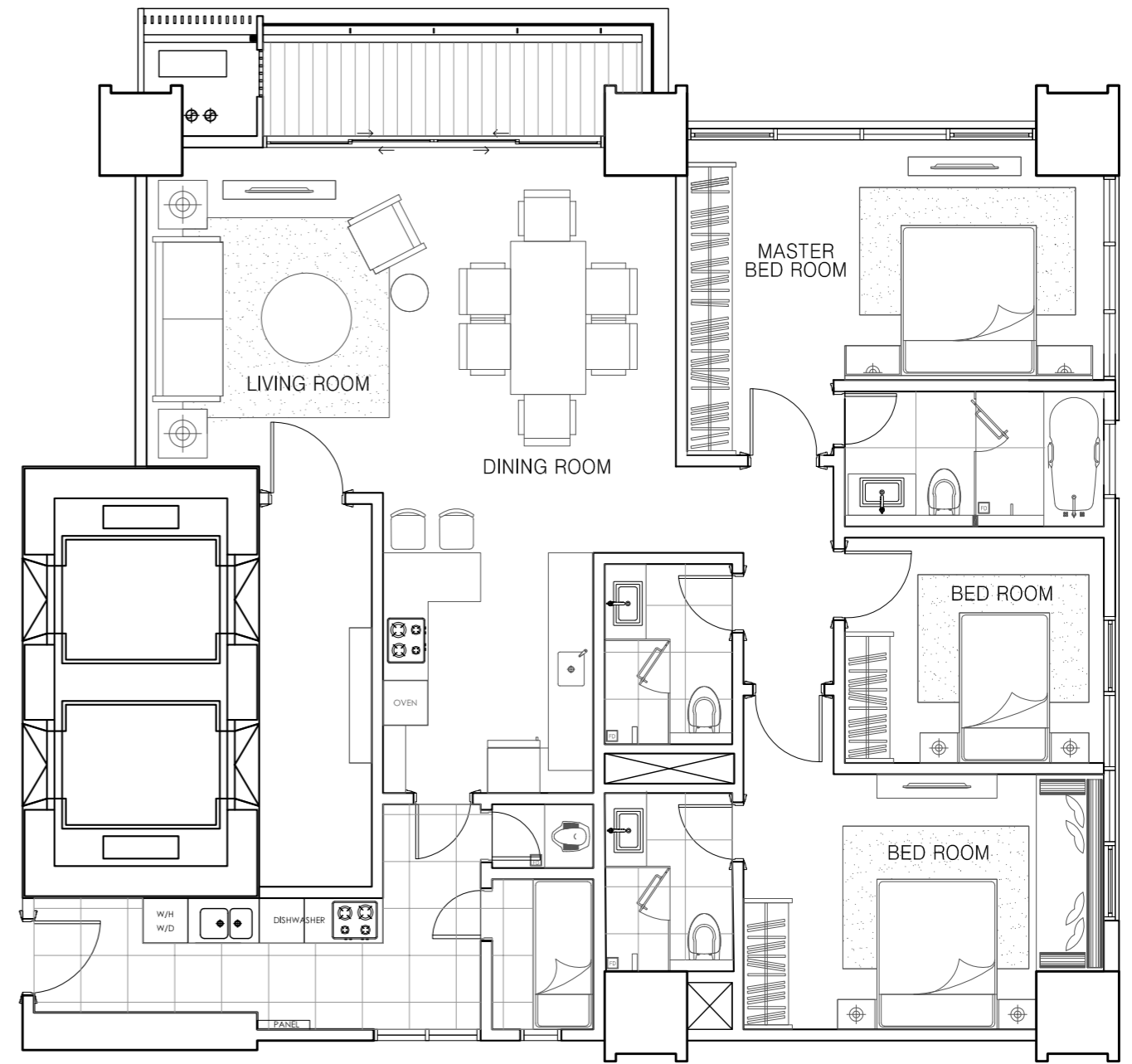
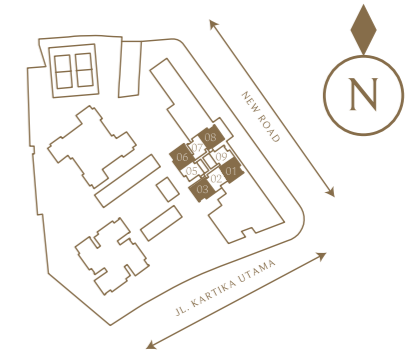
UNIT TYPE C2

NETT:132.20 m2 3 BEDROOMS



UNIT TYPE D2

3 BEDROOMS (CORNER) NETT:148.78 m2



JUNE 2017



Photo taken from Pondok Indah Office Tower



Photo taken from Pondok Indah Office Tower



DIAGRAMMATIC

ACTUAL FLOOR	FLOOR	D2	C2	D2	C2	D2	C2	D2	C2
		01	02	03	05	06	07	08	09
		3BR	3BR	3BR	3BR	3BR	3BR	3BR	3BR
31	PH	PH 01	PH 02	PH 03	PH 05	PH 06	PH 07	PH 08	PH 09
30	JP	JP 01	JP 02	JP 03	JP 05	JP 06	JP 07	JP 08	JP 09
29	35	3501	3502	3503	3505	3506	3507	3508	3509
28	33	3301	3302	3303	3305	3306	3307	3308	3309
27	32	3201	3202	3203	3205	3206	3207	3208	3209
26	31	3101	3102	3103	3105	3106	3107	3108	3109
25	30	3001	3002	3003	3005	3006	3007	3008	3009
24	29	2901	2902	2903	2905	2906	2907	2908	2909
23	28	2801	2802	2803	2805	2806	2807	2808	2809
22	27	2701	2702	2703	2705	2706	2707	2708	2709
21	26	2601	2602	2603	2605	2606	2607	2608	2609
20	25	2501	2502	2503	2505	2506	2507	2508	2509
19	23	2301	2302	2303	2305	2306	2307	2308	2309
18	21	2101	2102	2103	2105	2106	2107	2108	2109
17	20	2001	2002	2003	2005	2006	2007	2008	2009
16	19	1901	1902	1903	1905	1906	1907	1908	1909
15	18	1801	1802	1803	1805	1806	1807	1808	1809
14	17	1701	1702	1703	1705	1706	1707	1708	1709
13	16	1601	1602	1603	1605	1606	1607	1608	1609
12	15	1501	1502	1503	1505	1506	1507	1508	1509
11	12	1201	1202	1203	1205	1206	1207	1208	1209
10	11	1101	1102	1103	1105	1106	1107	1108	1109
9	10	1001	1002	1003	1005	1006	1007	1008	1009
8	09	0901	0902	0903	0905	0906	0907	0908	0909
7	08	0801	0802	0803	0805	0806	0807	0808	0809
6	07	0701	0702	0703	0705	0706	0707	0708	0709
5	06	0601	0602	0603	0605	0606	0607	0608	0609
4	05	0501	0502	0503	0505	0506	0507	0508	0509
3	03	0301	0302	0303	0305	0306	0307	0308	0309
2	02			0203	0205	0206			
1	GF	LOBBY							
		BASEMENT 1							
		BASEMENT 2							
		BASEMENT 3							

DISCLAIMER

While every care has been taken in the preparation of these materials, the developer and its agents shall not be held responsible for any inaccuracies therein. All statements, specifications, and plans are believed to be correct, but are not to be relied upon as statements or representations of fact. All floor areas are approximate measurements only and subject to final survey. All art renderings and illustrations contained in these materials are artist's impressions only and are not to be relied upon as representations of fact. Photographs contained herein do not necessarily represent as-built standard applications. All information and specifications are current at the time of going to print, are subject to change if required, and do not form part of an offer or contract. The developer reserves the right to modify the units or any part thereof as may be approved or required by the relevant authorities.

NATURAL STONE DISCLAIMER

Quarried natural stone (granite, marble, limestone, travertine, quartz stone & any quarried products) produced by Mother Earth and have conditions that cannot be controlled. Some stone may contain naturally occurring imperfections / variations, including color and shade, geological flaws, irregular markings, voids, veins, fissures, cracks, lines and/or minor separations. The manufacturer may repair these variations by methods including: waxing, filling, or reinforcements with non-stone products. When the product is installed, the various sections will be joined together with visible seams and typically filled with a color-coordinated adhesive to minimize their appearance. The location and quantity of seams are determined by the fabricator accounting for technical conditions and design. Customers / buyers have to understand the condition above as part of characteristic and the beauty of having natural stone products. No typical situations have typical characteristics. Customer has no reason to reject the delivery as long those characteristics not impairing the function or wearing of the materials.

MATERIALS

SPECIFICATIONS

01. FLOOR FINISH	Foyer, Living, Dining Rooms Bathrooms Bed rooms Service Area	Master Bathroom Others Maid Master Bedroom Others	Imported marble Imported marble Homogeneous tile Ceramic Imported marble Imported marble Homogeneous tile
02. WALL FINISH			Gypsum, Plaster & Coat Smooth painted
03. CEILING FINISH	Painted Gypsum		± 3.1 M at Living Room ** ± 3.35 M at Junior Penthouse & Penthouse
04. BATHROOMS	Closet Bathtub, lavatory Shower, Faucets, Rain Shower		Toto Premium or equal Toto Premium or equal Grohe or Equal
05. DOORS	Main Door Bedrooms Bathrooms*		Solid Engineering Door Honeycomb Door Honeycomb Door
06. KITCHEN • DRY	Appliances Cabinet Material Cabinet Material Door & Panel Finishing Material Counter Top		Electric Hob, Hood, Oven, Built-in Refrigerator (Smeg or Equal) Hi & Lo, Bika Kitchen or equal MFC MDF with Lacquer High Gloss Solid Surface/Compac Quartz or Equal
07. KITCHEN • WET	Appliances Cabinet Material Cabinet Material Door & Panel Finishing Material Counter Top		Gas Hob, Hood, Dishwasher (BOSCH or Equal) Hi & Lo, Toto Kitchen or equal MFC MFC Granite
08. WARDROBE	Built-in All Bedrooms/provided		MFC-Melamine Faced Chipboard
09. AC	Living & Dining Rooms Bedrooms		Split Duct (Ceiling Concealed Type) Split Duct (Ceiling Concealed Type)
10. ENTERTAINMENT			Cable TV Connection to Living Room and All Bedrooms
11. SECURITY			Video Communication 1 unit at Living Room
12. TELEPHONE			Living Room & All Bedrooms
13. LIGHTING			Down Light
14. ELECTRICITY			10600 VA
15. WATERHEATER	Centralized Supply to All Bathrooms*, Wet & Dry Kitchen		Stiebel or Equal
16. PARKING			2 Lot (Reserved) (Parallel / Tandem)
17. HOME APPLIANCES			Washer Dryer (BOSCH or Equal)

* excluding maid quarters

** untuk unit 0301, 0308, dan 0309

Contractor &
Consultant list

Amala residence
transcends architectural
conventions to give
you a home with a soul

Main Contractor

Total Bangun Persada, Tbk
(Indonesia)

Architects

DP Architect Pte Ltd.
(Singapore)
PT. Anggara Architeam
(Indonesia)

Landscape Designer

Belt Collins International Pte. Ltd.
(Singapore)

Mechanical & Electrical

BECA Engineering NZ Ltd
(PT. Bimatekno Karyatama Konsultan)
(New Zealand)

Structural Designer

BECA Engineering NZ Ltd
(PT. Bimatekno Karyatama Konsultan)
(New Zealand)

Unit Interior Designer

Genius Loci Pte. Ltd.
(Singapore)

Quantity Surveyor

PT. Wilde and Woollard Indonesia
(Indonesia)

The most desirable
address in
pondok indah luxury
residential

