



THE
ELEMENTS

luxurious living



WELCOME TO THE ELEMENTS

A Prestigious Masterpiece by Sinar Mas Land in the Heart of Jakarta.
Experience a refined lifestyle in our exclusive sanctuary,
where luxury meets tranquility.

Located in the Jakarta's CBD at Rasuna Kuningan,
The Elements blends unmatched convenience and
seamless integrated connectivity.





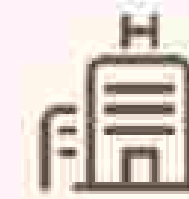
THE CAPITAL'S MOST PRESTIGIOUS LOCALES

Situated at the vibrant Epicentrum district within The Golden Triangle of Jakarta.

Immediate access to the city's premier retail, business, and lifestyle destinations. Providing an unparalleled fusion of Convenience and Luxury.



2 Min
LRT Station
Rasuna Said



2 Min
MMC Hospital
Mayapada Hospital



10 Min
Grand Indonesia
Plaza Indonesia



15 Min
Jakarta Inner
Ring Road



View
Google Maps



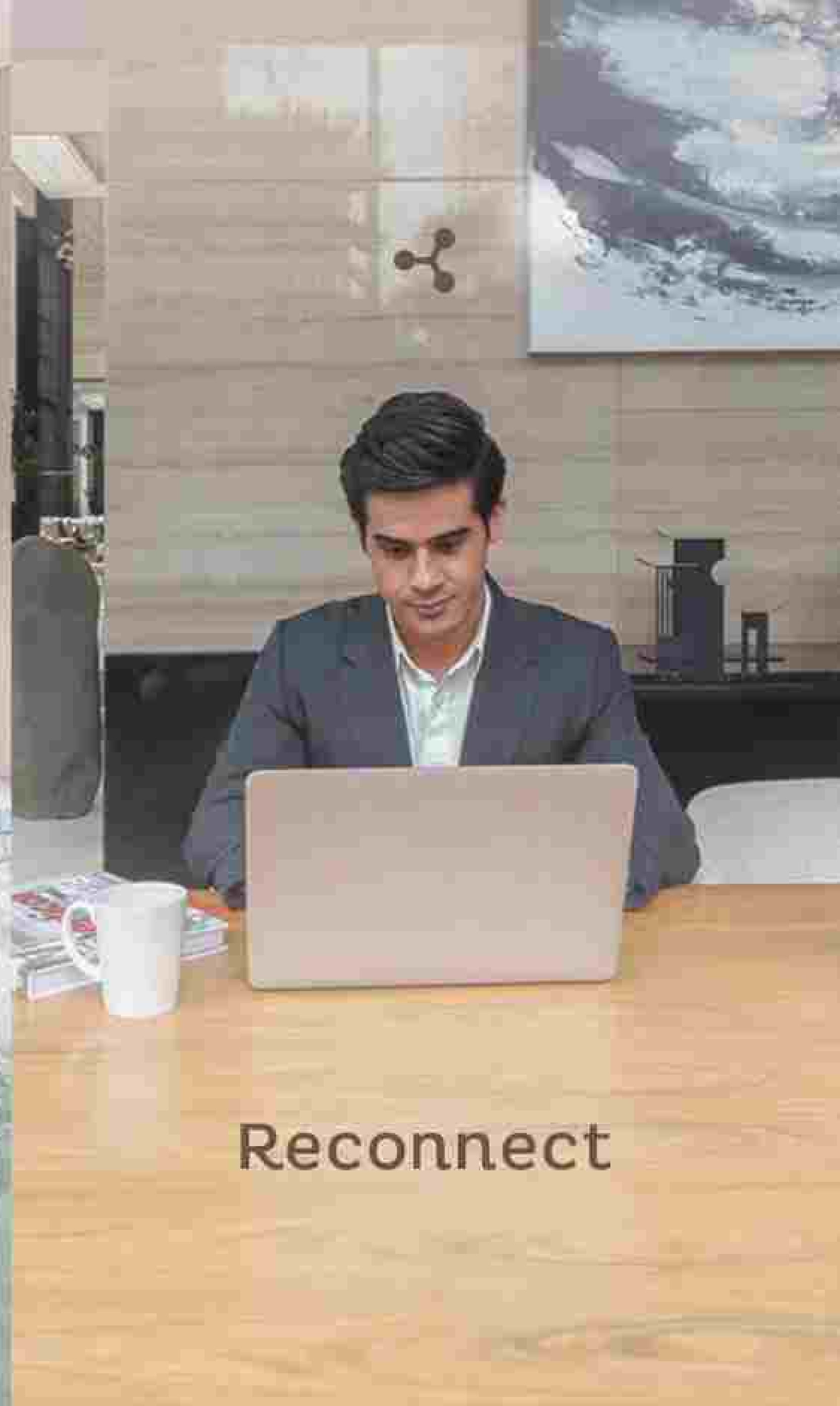
The Essence of **SERENITY**
The Pinnacle of **HARMONY**



Relax



Rejuvenate



Reconnect



SERENITY TOWER | 3BR+

With private lifts for each unit & unique folding window balconies, offers a rare combination of comfort, space and sophistication in the heart of Jakarta.

The spacious layouts amplify the sense of luxury and exclusivity, creating a truly grand and personalized living experience.



LUXURY LIVING THAT ALIGNS WITH YOUR INNER ELEMENTS





THE SPACIOUS LAYOUTS AMPLIFY
THE SENSE OF LUXURY & EXCLUSIVITY



HARMONY

TOWER | 2BR 2BR+ 3BR+

Thoughtfully designed to offer spacious layouts for both families & executives, provides an elevated living experience with balconies that showcase stunning city views of Jakarta.

Here, comfort and luxury come together effortlessly, creating a refined sanctuary for those who appreciate the finer things in life.





Unit Type A

SEMI GROSS 127 sqm | 2BR+



Unit Type B

SEMI GROSS 141 sqm | 3BR

EXPERIENCE LUXURY LIVING
OF THE ELEMENTS

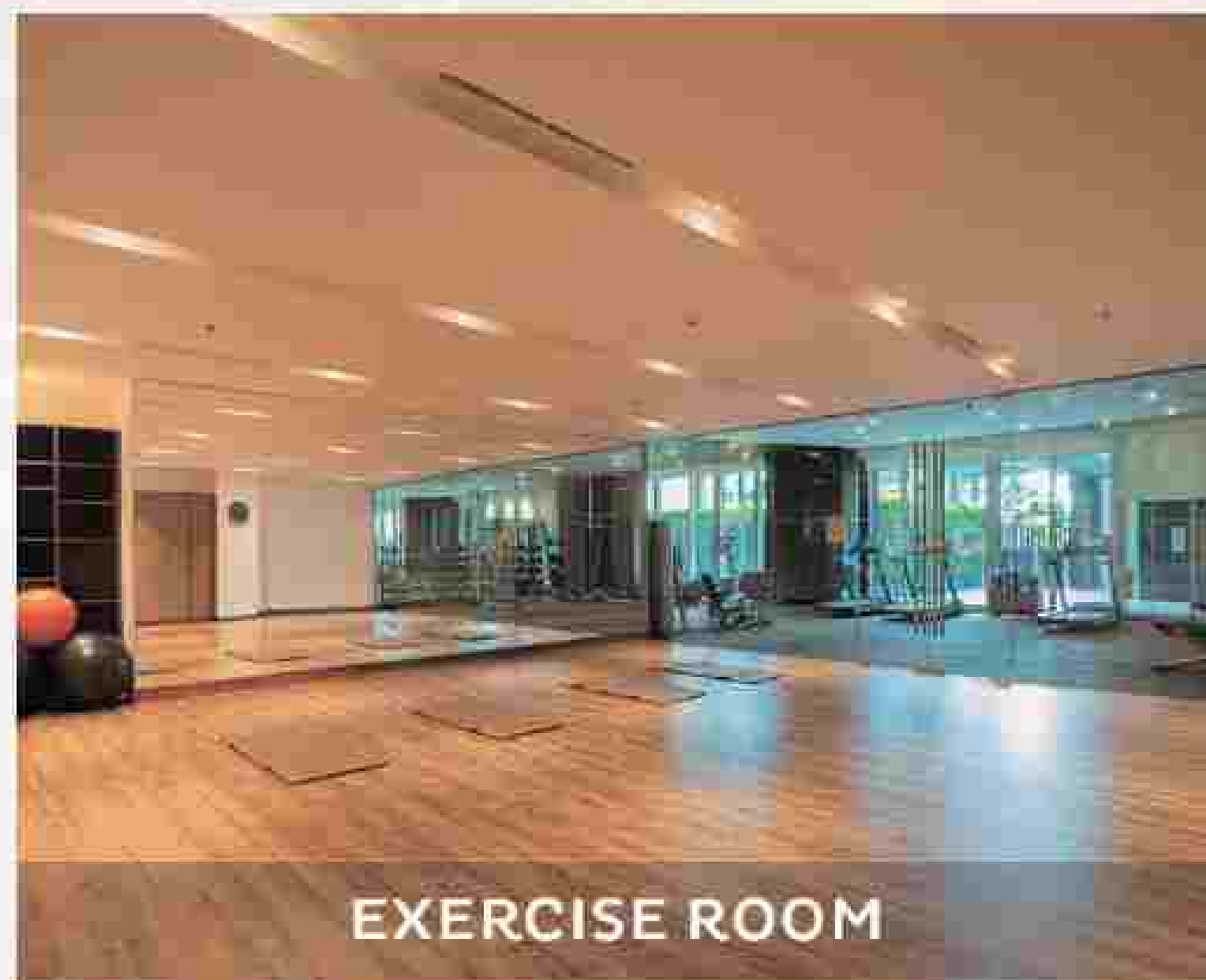
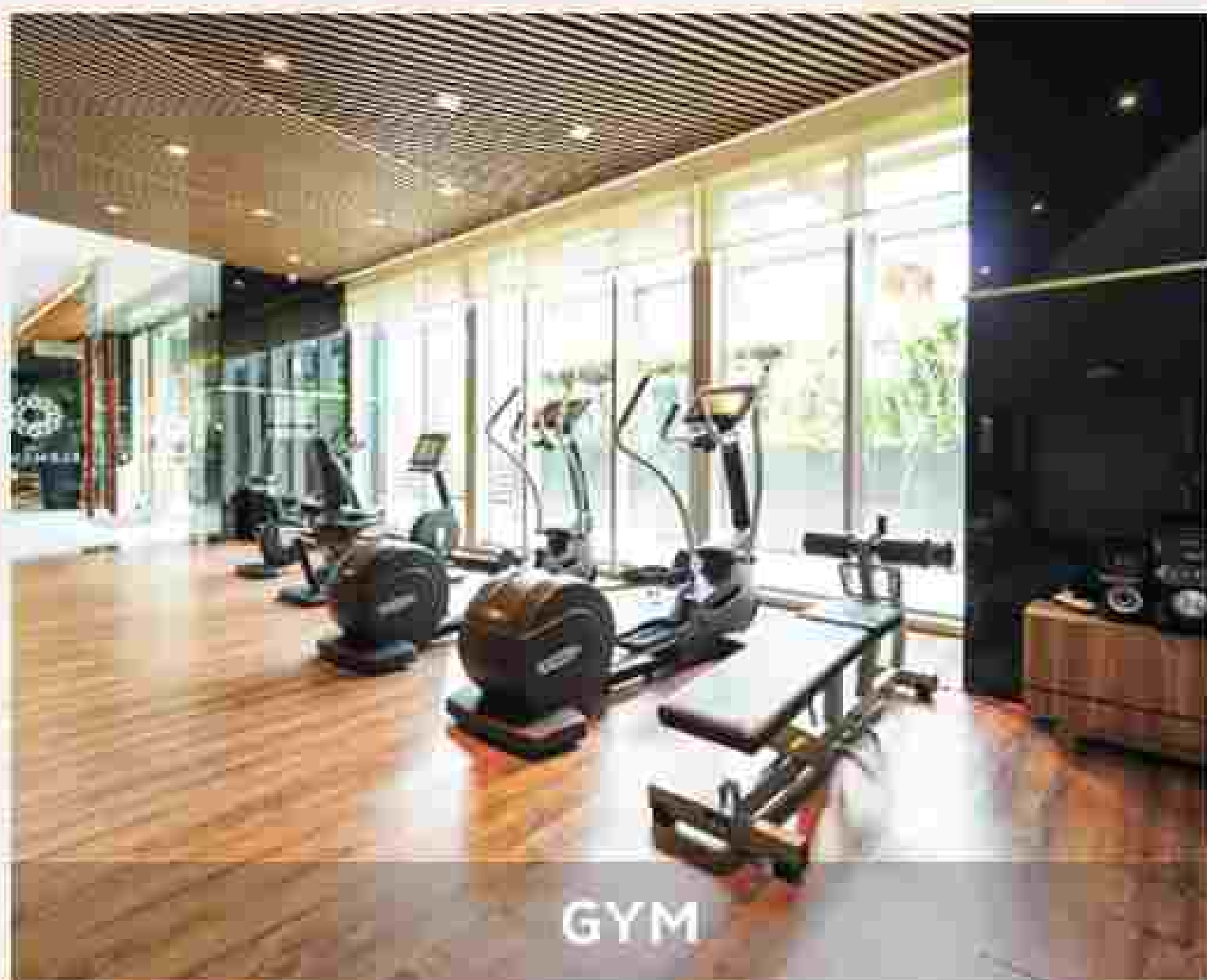
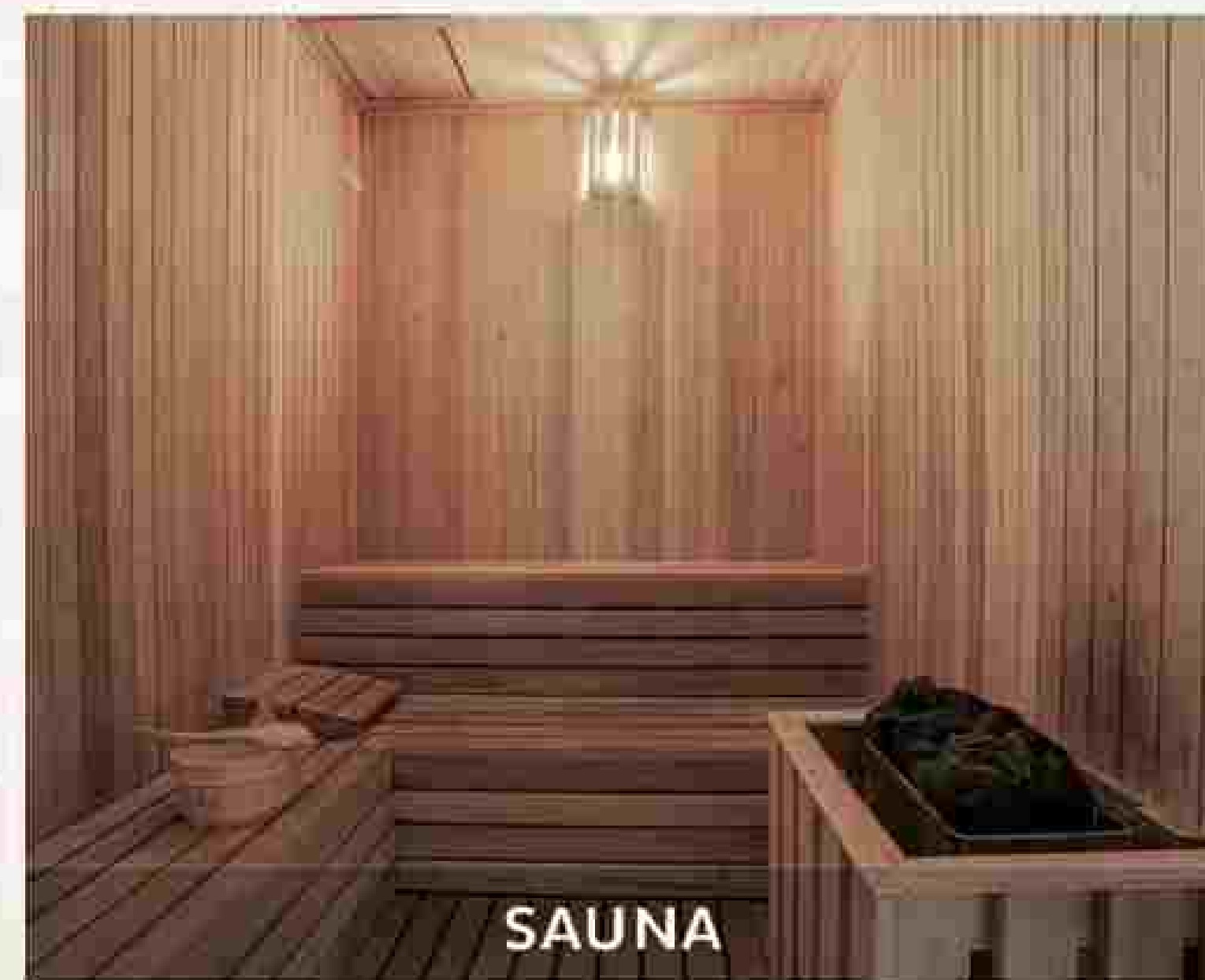


GET THE BEST
COMFORT & MODERN
FACILITIES EVERYDAY

With curated facilities such as a Swimming Pool, Function Hall, Business Lounge, etc.

The Elements delivers a complete lifestyle experience where wellness, productivity, and leisure seamlessly converge in one refined.









REACH FOR THE FUTURE

Providing not only luxurious space and furnished with first class amenities, that will enhance investment value in the heart of Jakarta's most vibrant area, The Elements will set a new benchmark for urban luxury living.



Innovators in design and development, Sinar Mas land is the largest and most diversified property developer in Indonesia. With a culture of excellence, the company continues to commit to presenting cutting edge projects in city development, townships, residential, commercial and industrial estates across the region.

Building the future of living, where every space enhances life. Owns a strategic land bank and operate stand out properties such as the Grand Hyatt, Plaza Indonesia, Sinar Mas Land Plaza and other prime retail and residential projects in Singapore, Malaysia, China, London and many more strategically spread out within Southeast Asia and beyond.

SITEPLAN



ENTRANCE GATE



TOWER SERENITY



TOWER HARMONY

SOUTH
EAST

NORTH
EAST

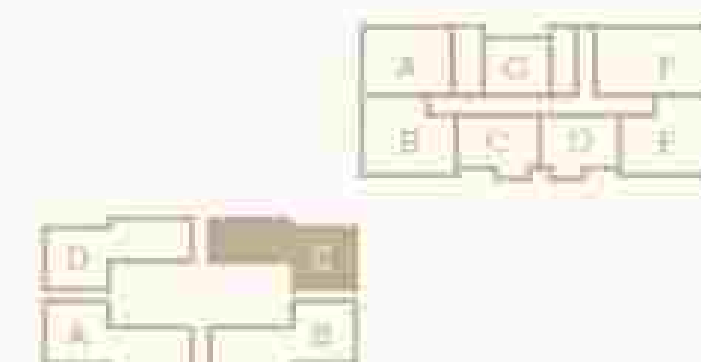
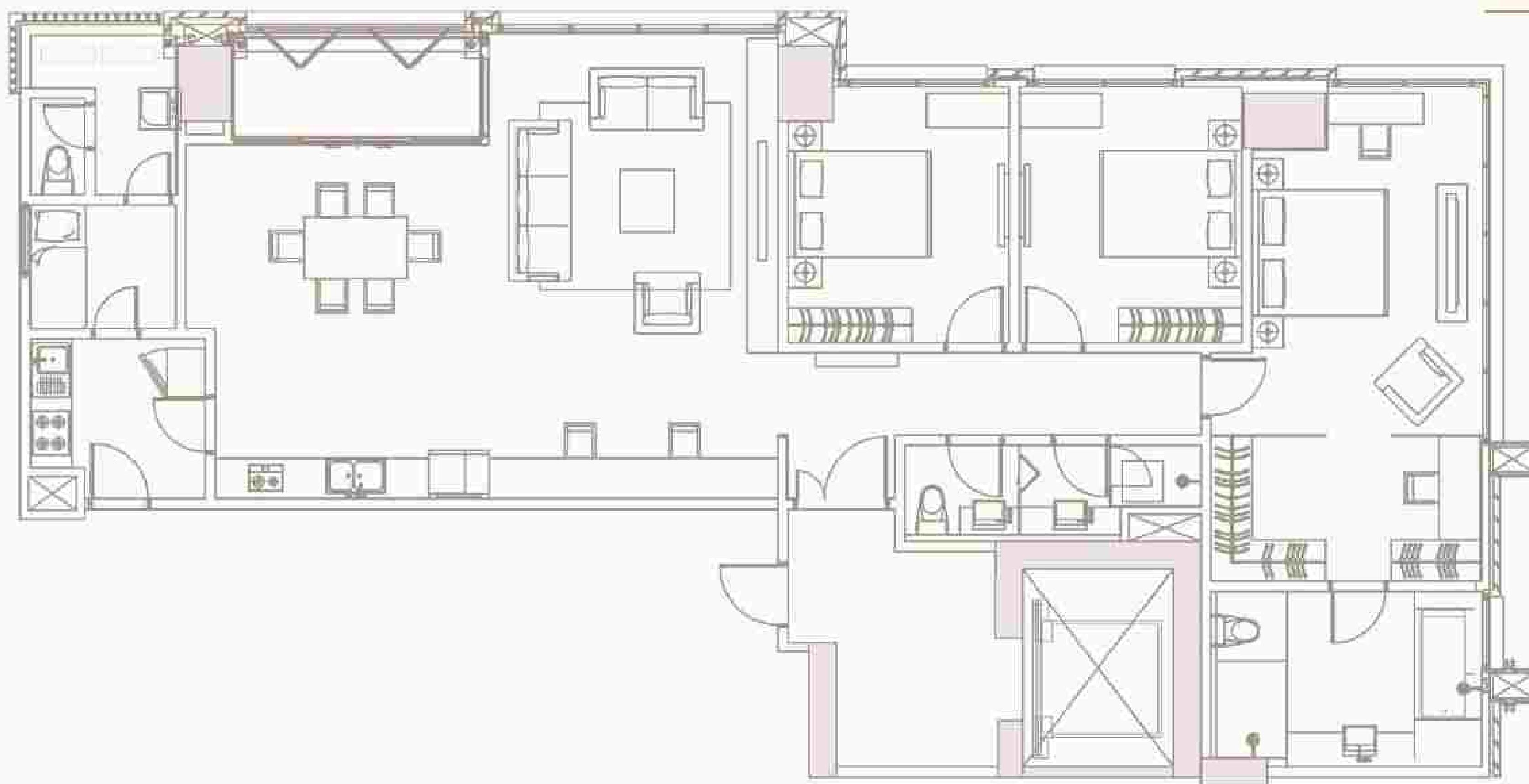
SOUTH
WEST

NORTH
WEST



TOWER SERENITY
UNIT A-B-C-D

SEMI GROSS 186 sqm
3BR



3 Bedrooms 

2 Bathrooms 

2 Kitchens 

1 Maid room 

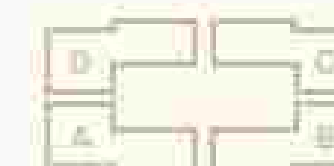
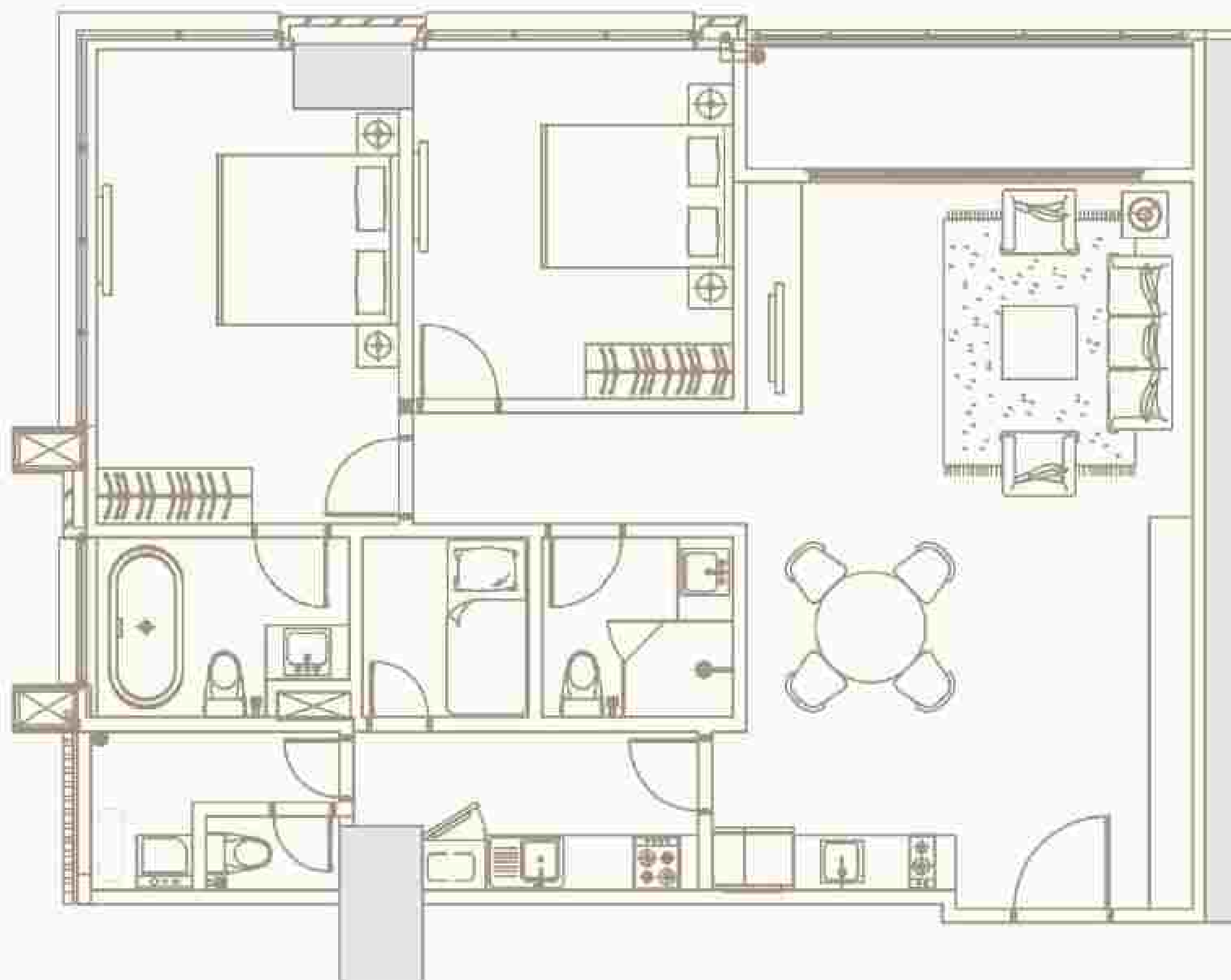
Private Lift 

Folding Window Balcony 

TOWER HARMONY

UNIT A

SEMI GROSS 127 sqm
2BR+



2 Bedrooms 

2 Bathrooms 

2 Kitchens 

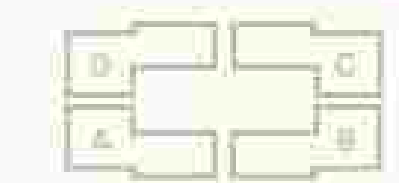
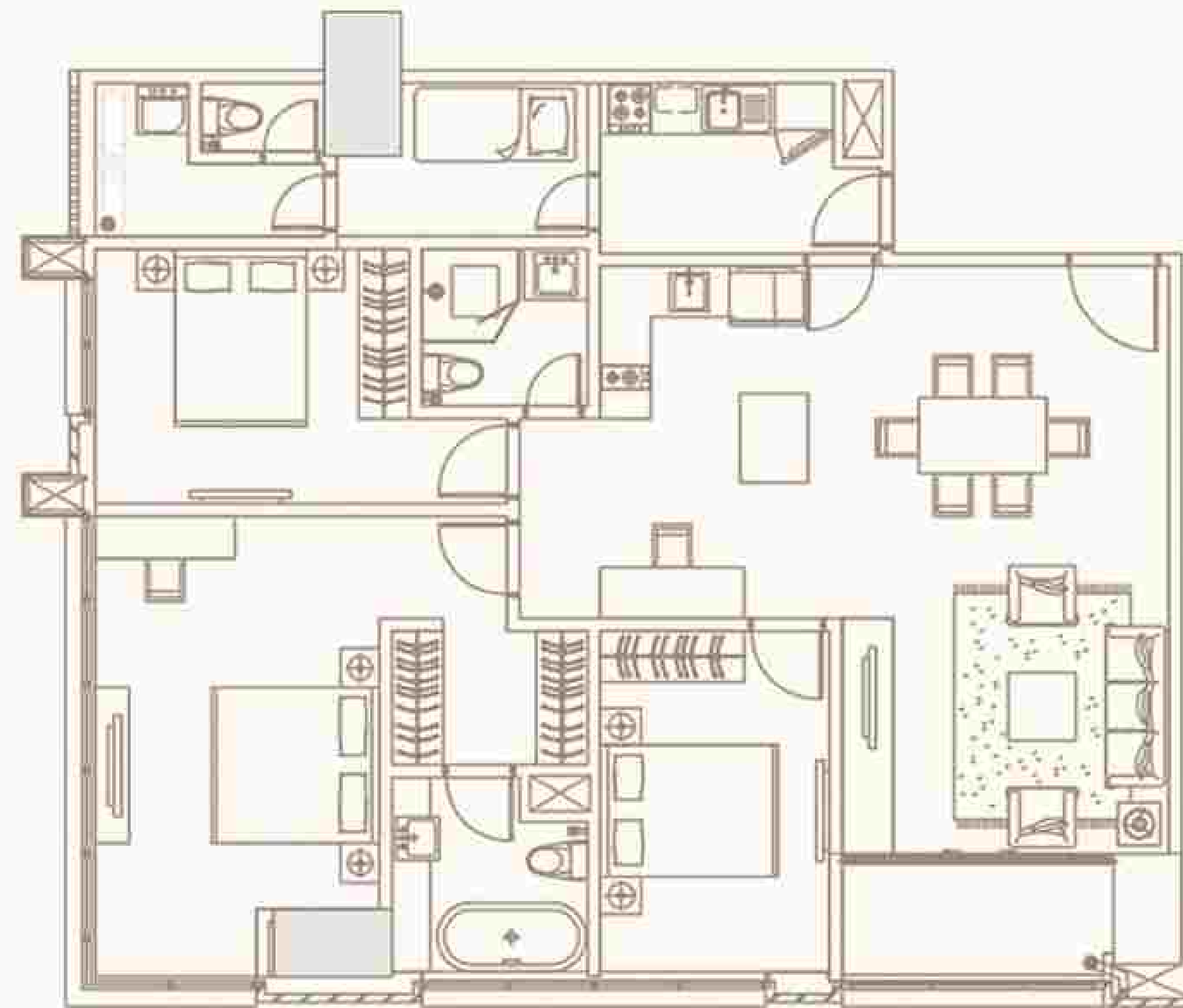
1 Maid room 

Balcony 

TOWER HARMONY

UNIT B

SEMI GROSS 141 sqm
3BR




3 Bedrooms 

2 Bathrooms 

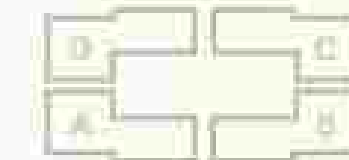
2 Kitchens 

1 Maid room 

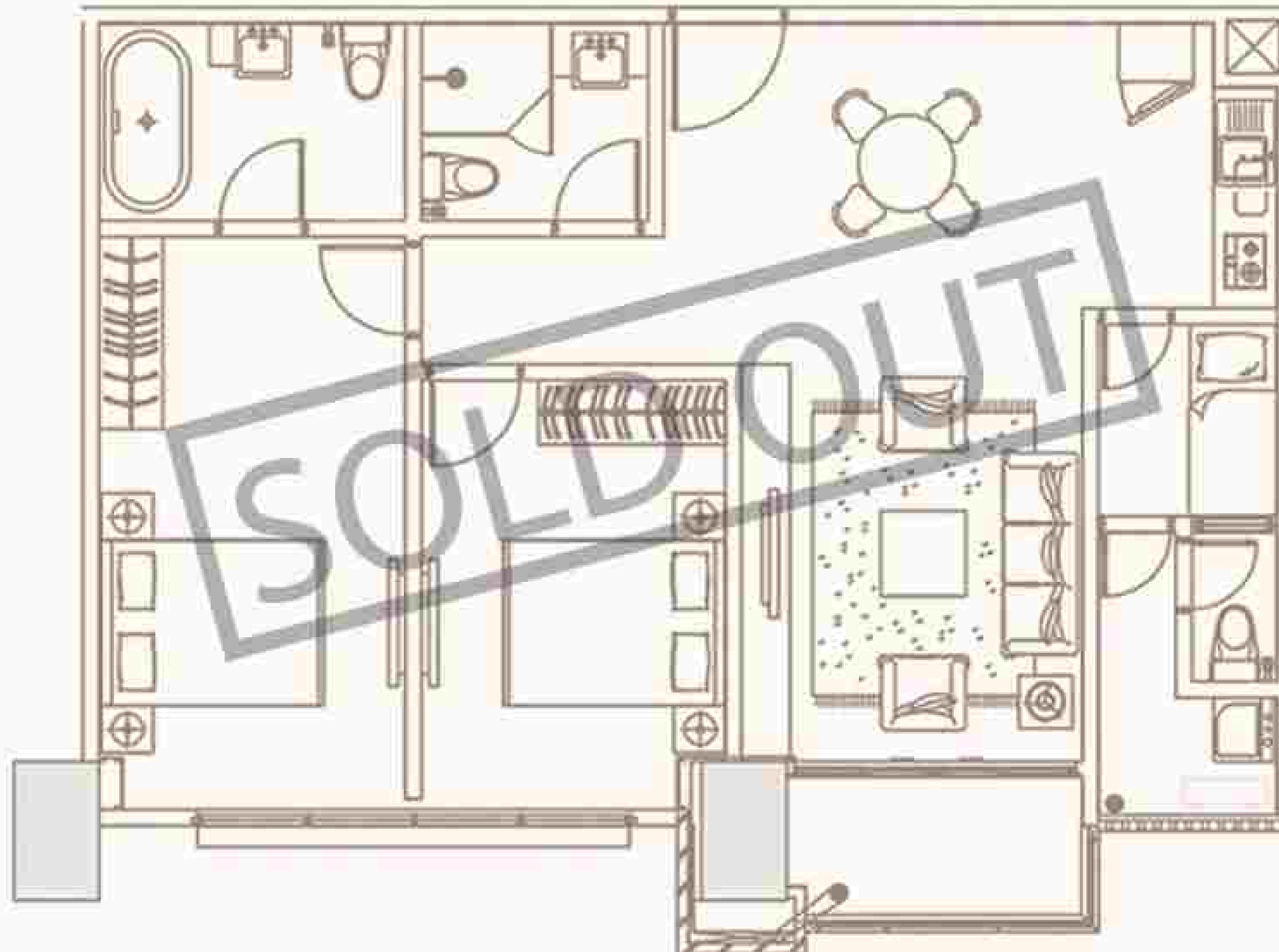
Balcony 

TOWER HARMONY UNIT C

SEMI GROSS 96 sqm
2BR+



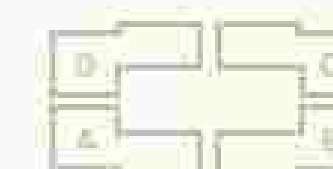
- 3 Bedrooms
- 2 Bathrooms
- 2 Kitchens
- 1 Maid room
- Balcony



TOWER HARMONY

UNIT D

SEMI GROSS 96 sqm
2BR+



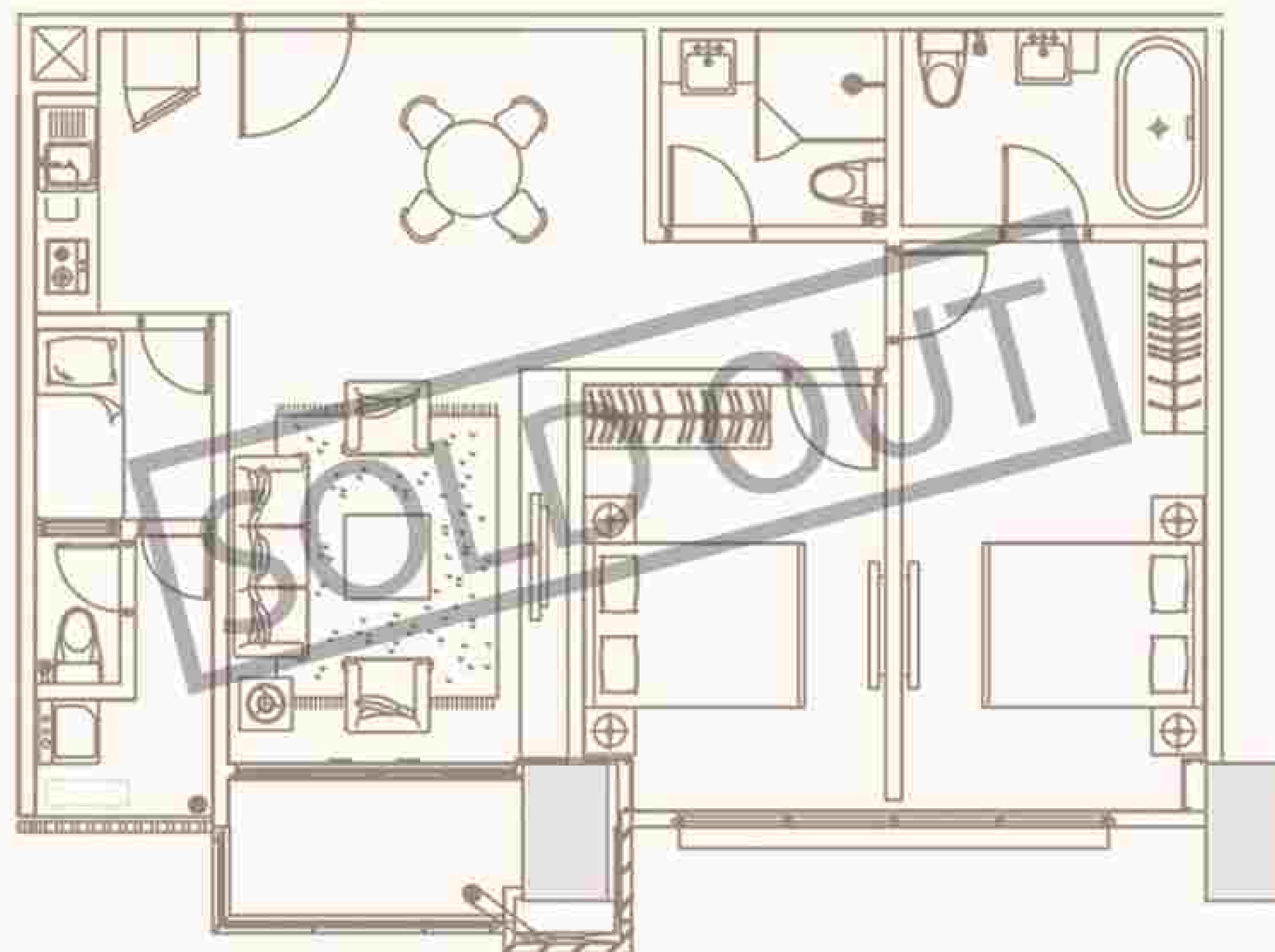
3 Bedrooms 

2 Bathrooms 

2 Kitchens 

1 Maid room 

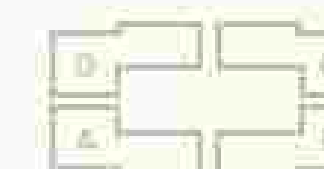
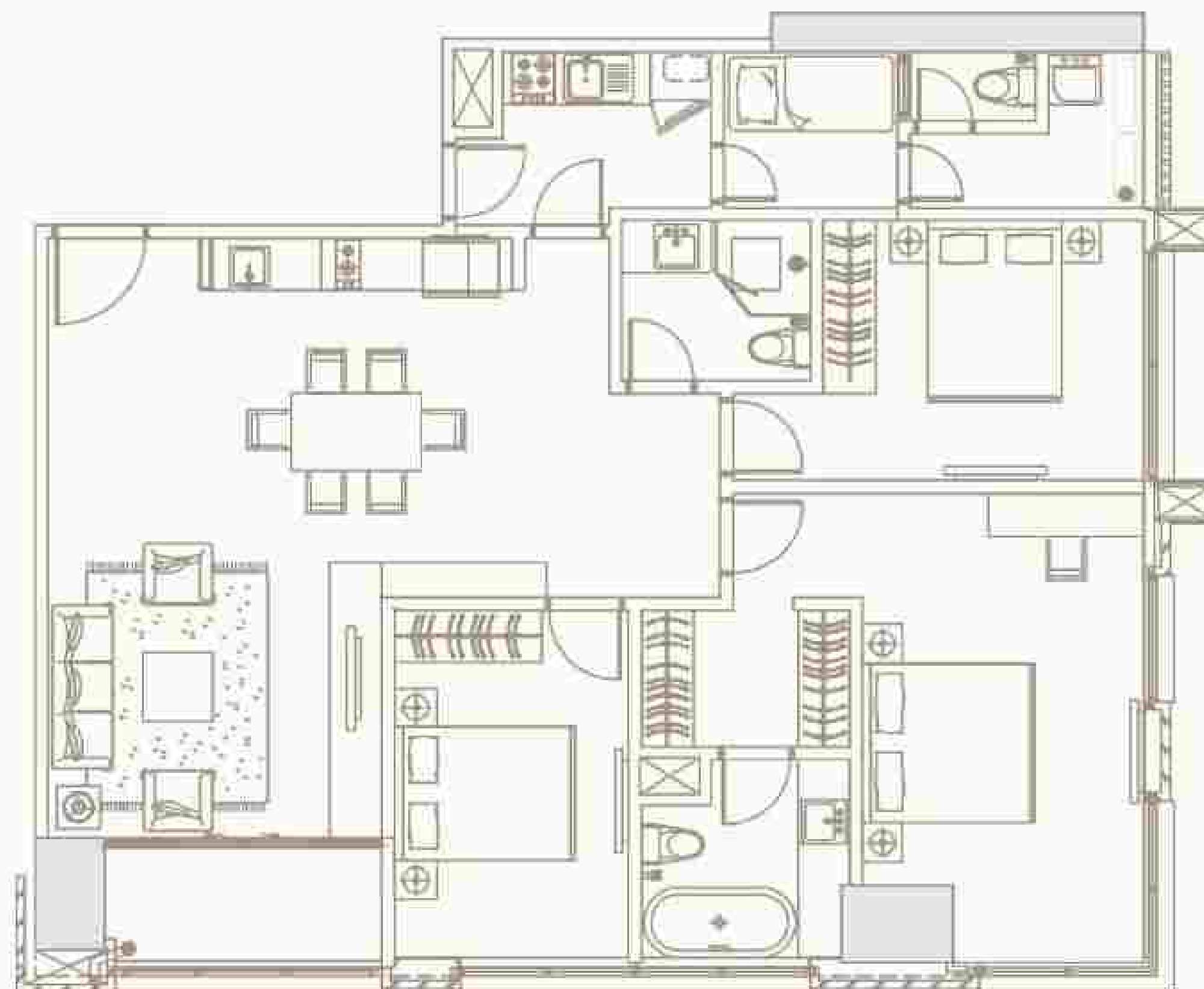
Balcony 



TOWER HARMONY

UNIT E

SEMI GROSS 139 sqm
3BR



3 Bedrooms 

2 Bathrooms 

2 Kitchens 

1 Maid room 

Balcony 

TOWER HARMONY

UNIT F

SEMI GROSS 100 sqm
2BR+



3 Bedrooms 

2 Bathrooms 

1 Kitchen 

1 Maid room 

Balcony 

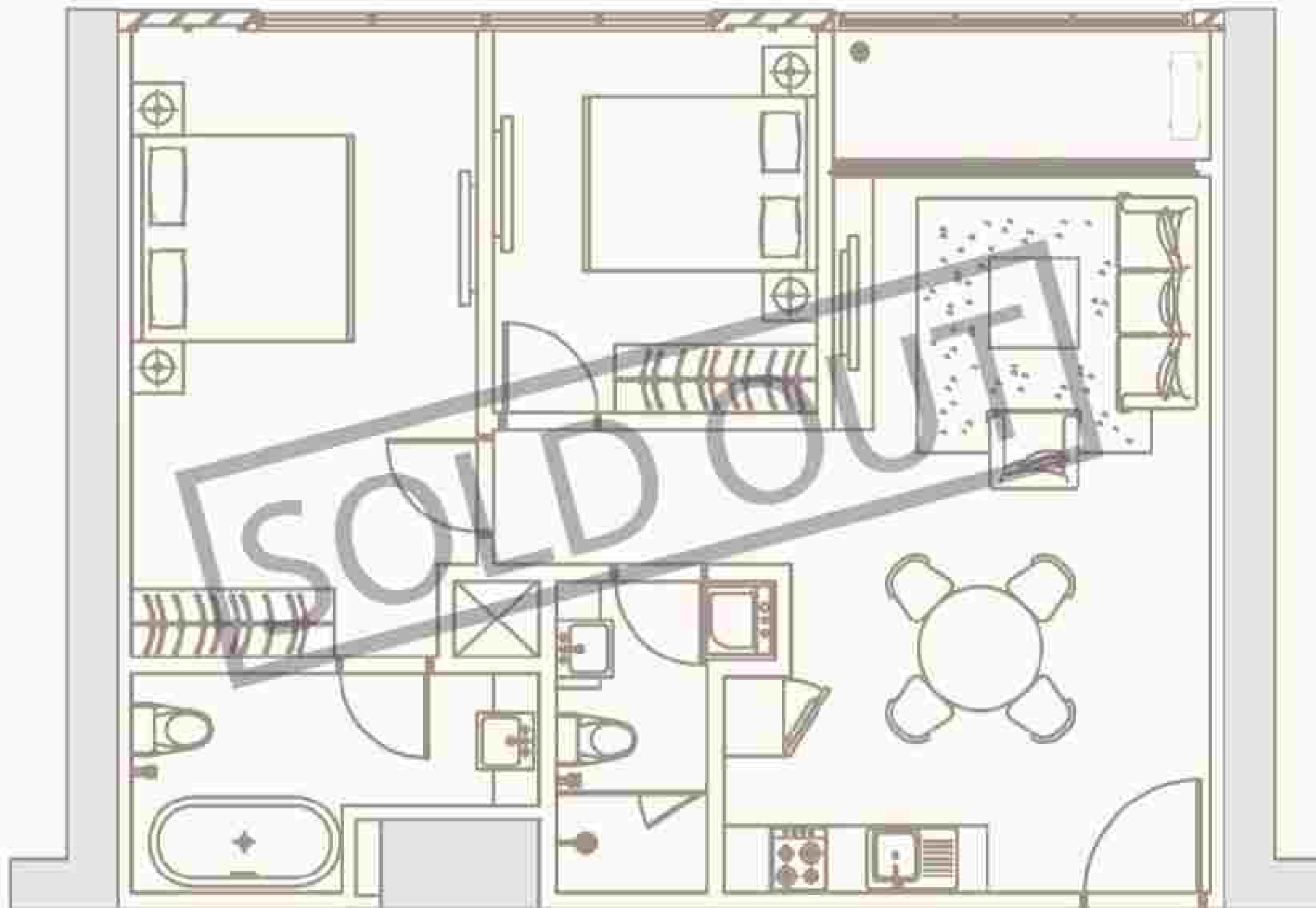


TOWER HARMONY UNIT G

SEMI GROSS 84 sqm
2BR



- 2 Bedrooms 
- 2 Bathrooms 
- 1 Kitchen 
- Balcony 





SEE OUR **SERENITY TOWER** UNIT IN 360

Embark on a virtual journey through our tower and discover the luxury living at The Elements, all at your fingertips.





SEE OUR **HARMONY TOWER** UNIT IN 360

Embark on a virtual journey through our tower and discover the luxury living at The Elements, all at your fingertips.





THE ELEMENTS

luxurious living



www.theelements.co.id

 The Elements Apartment  The Elements Apartment  theelementsapartment  theelementsapartment

***To find out more, click or tap (👆) the links on our website and social media**

Marketing Office The Hub Sinar Mas Land, Jl Epicentrum Boulevard Barat
Kawasan Rasuna Epicentrum, Jakarta 12960, Indonesia

Member of
 **sinar mas land**
Building for a better future

DISCLAIMER: All information, illustrations, and material contained in this brochure are intended to provide general guidance and are subject to change without prior notice. The developer has taken every reasonable measure to ensure the accuracy of the contents at the time of publication; however, no guarantee is given that this information is completely free from error or omission. All plans, layout, specifications, and descriptions are for reference only and may be adjusted in accordance with the requirements of relevant authorities or at the developer's discretion. Furniture, fittings, fixtures, and other details shown may not be part of the advertisement or may vary at the time of delivery. Some views in this brochure—such as those of facilities and the surrounding environment—may include a combination of artist impressions, 3D renderings, and actual photographs for illustrative purposes. These images are intended to convey the design intent and general atmosphere of the development. The developer reserves the right to make modifications deemed necessary without prior notice in line with company policies and regulatory approvals.