



**LEVANTE**  
CL. KLASIK



**KLASIKA**  
CLASSY LIVING

WELCOME TO KLASIKA, WHERE TIMELESS ELEGANCE MEETS CONTEMPORARY LIVING. A GRANDEUR STATE OF ART THAT BLENDS THE GRACE OF CLASSICAL ARCHITECTURE WITH THE ALLURE OF MODERN DESIGN. FROM THE GRANDEUR OF THE EXTERIOR TO THE SPACIOUS INTERIORS BATHED IN NATURAL LIGHT, EVERY DETAIL REFLECTS THE SPLENDOR OF CLASSIC AESTHETICS INFUSED WITH THE COMFORTS OF MODERN LIVING.

THE CLASSIC TOUCH IN YOUR MODERN LIVING



Discover a world where every corner radiates warmth and tranquility. Bathed in gentle light, casting a soothing ambiance that effortlessly calms your senses. Experience a harmonious blend of modern convenience and cozy elegance.



**SWITCH ON  
THE LIGHT AND  
LET THE HOME  
COMFORT YOU**



Step into a world where accessing every amenities becomes a breeze, where convenience becomes an essential part of your everyday living.

**YOUR EVERYDAY  
CONNECTION THAT  
EASE YOUR NEEDS**



**ENJOY  
THE OUTDOOR BLISS  
WHERE THE COMMUNITY  
FLOURISHES**

A Gate Mini Plaza that offers a picturesque setting where residents can relax and gather around.





Enjoying a refreshing run on the scenic jogging track

# WHERE COMFORT AND WELLNESS FIT IN YOUR DAILY LIFE

A serene sanctuary where you can  
experience the perfect harmony of  
luxurious living and holistic well-being.








**LEVANTE**  
AT KLASIKA

**T10**  
10 X 14

**135 LB**  
**140 LT**

 3   
  4 + 1  
 3 + 1



FIRST FLOOR



SECOND FLOOR



**LEVANTE**  
AT KLASIKA

**T8**  
8 X 13  
8 X 15

**120 LB**  
**104 LT**  
**120 LT**

2    3 + 1  
 3 + 1



FIRST FLOOR



SECOND FLOOR





**LEVANTE**  
AT KLASIK

**T7**  
7 X 13

**102 LB**  
**91 LT**

2    3 + 1  
 2 + 1



FIRST FLOOR



SECOND FLOOR



**LEVANTE**  
AT KLASIKA

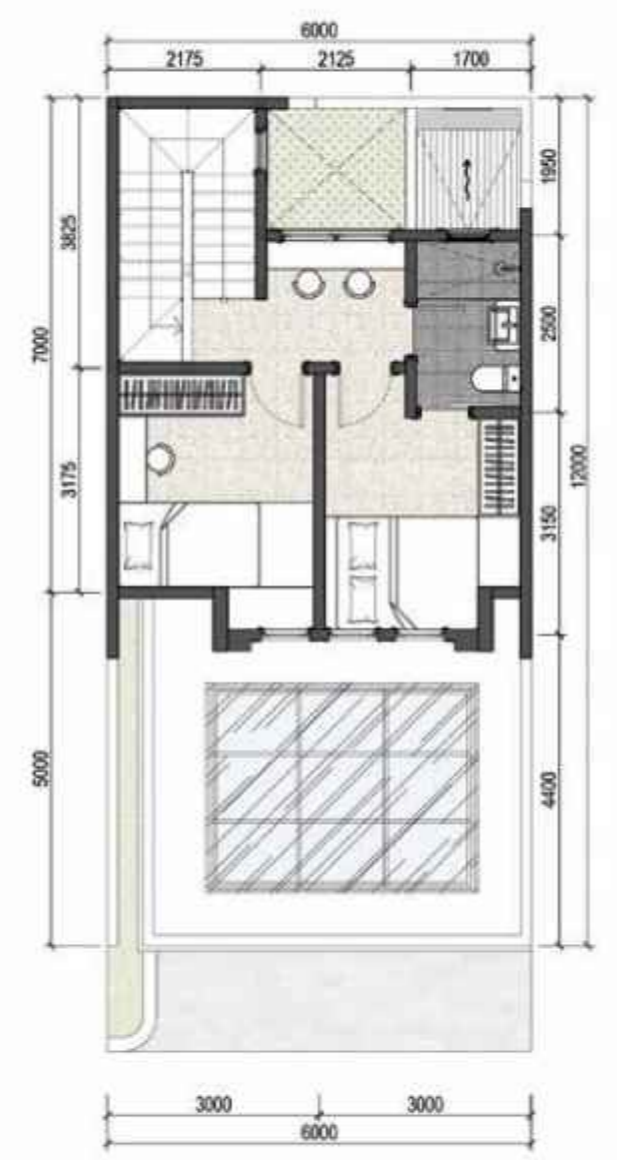
**T6**  
6 X 12

**77 LB**  
**72 LT**

- 🚗 2
- 🛏 3
- 🚿 2



FIRST FLOOR



SECOND FLOOR



# PRIVATE TOLL ACCESS

**15 MINUTES TO JAKARTA, SURROUNDED BY GREAT FACILITIES**

Grand Wisata is the only urban city situated between two major toll road access points, namely the Jakarta-Cikampek Toll Road and the Jakarta Outer Ring Road II (Tol JORR II) on the eastern side of Jakarta. With just a 15-minute drive to DKI Jakarta, Grand Wisata is strategically located in close proximity to Jakarta. It offers the best transportation facilities, including the LRT (Light Rail Transit), high-speed train, and an extensive bus network serving the Jabodetabek area.



HALIM FAST TRAIN STATION | LRT STATION - BEKASI TIMUR | BECAKAYU TOLL | JAKARTA-CIKAMPEK ELEVATED TOLL | JORR 2



**BEST CITY DEVELOPMENT**  
BEKASI AND SURROUNDING AREAS

**MORE THAN 40 YEARS BUILDING AWARD WINNING TOWNSHIPS**







- LIFESTYLE & LEISURE
- living world
  - Get Wet
  - GW AUTO CENTER
- MODERN MARKET
- FARMERS MARKET
  - Total GUAH SEGAR
  - PASAR MODERN
- EDUCATION CENTRE
- SEKOLAH NOTRE DAME
  - IPEKA
- HEALTH CARE
- RUMAH SAKIT HERMINA
  - EKA HOSPITAL
  - Century
  - kimia farma

# 5 MINUTES CITY

A place where convenience, connectivity, and a vibrant lifestyle seamlessly intertwine. Experience the allure of integrated urban living, where every aspect of your daily life is effortlessly catered to within a dynamic and thriving cityscape.

UNIT TYPE (LB/LT)

|   |                             |
|---|-----------------------------|
|  | 77/72 (6X12)                |
|  | 102/91 (7X13)               |
|  | 120/104 & 120 (8X13 & 8X15) |
|  | 135/140 (10X14)             |

FUTURE DEVELOPMENT



## TECHNICAL SPECIFICATION

|              |  |            |  |
|--------------|--|------------|--|
| ATAP         | Kerangka atap: Baja ringan<br>Penutup atap: Atap Beton Flat Cisangkan/ setera            | LISTRIK    | 2200 VA  |
| LANTAI UTAMA | Homogeneous Tile/ setera (R. Utama)<br>Homogeneous Tile/ setera (K. Mandi/ Service Area) | AIR        | Standar PDAM   |
| PLAFOND      | Rangka Hollow<br>Penutup Gypsum  | KUSEN      | Aluminium + Powder coating finish  |
| CARPORT      | Homogeneous Tile/ setera<br>Kanopi beton & penutup polikarbonat                          | DAUN PINTU | Pintu Utama: Engineered door + handle ex/ import<br>Pintu Kamar: Engineered door + handle ex/ import |
| SANITARI     | American Standard/ setera  | PONDASI    | Pondasi tapak, batu kali & beton bertulang   |
| SMARTHOME    | CCTV, SmartdoorLock, Smart light switch  | FINISHING  | Cat mawilok/ setera  |
|              |  | DINDING    | Batu bata dipleser & di aci  |

Disclaimer: All data, illustrations, plans, and specifications listed in this brochure are based on situations and conditions during the preparation period. Changes can occur at any time and the full rights of the developers. All information in this brochure does not form part of an offer or other written agreement.



Sinarmas Land stands as the premier property developer in Indonesia, actively contributing to the country's development for 40 years across 26 cities in Indonesia and 5 countries. Sinarmas Land has played a pivotal role in shaping skylines, creating iconic landmarks, and building thriving communities. Our unwavering commitment to excellence, innovation, and sustainability has earned us the trust and admiration of customers, partners, and stakeholders alike. From residential projects that redefine modern living to commercial developments that drive economic growth, Experience the visionary spirit of Sinarmas Land, where our passion for building a better future.



#### MULTI AWARD WINNING DEVELOPER





Marketing Gallery  
Jl. Celebration Boulevard Kav.1  
Tambun Selatan, Bekasi  
Jawa Barat 17510  
Indonesia



Grand Wisata Bekasi



Grandwisata.sinarmasland

Member of



**sinarmas land**

Building for a better future